

Datasheet for ABIN655873

**anti-C1QC antibody (AA 93-120)****4** Images[Go to Product page](#)

## Overview

Quantity:	400 µL
Target:	C1QC
Binding Specificity:	AA 93-120
Reactivity:	Human
Host:	Rabbit
Clonality:	Polyclonal
Conjugate:	This C1QC antibody is un-conjugated
Application:	Western Blotting (WB), Flow Cytometry (FACS), Immunofluorescence (IF), Immunohistochemistry (Paraffin-embedded Sections) (IHC (p))

## Product Details

Immunogen:	This C1QC antibody is generated from rabbits immunized with a KLH conjugated synthetic peptide between 93-120 amino acids from the Central region of human C1QC.
Clone:	RB31626
Isotype:	Ig Fraction
Purification:	This antibody is purified through a protein A column, followed by peptide affinity purification.

## Target Details

Target:	C1QC
Alternative Name:	C1QC ( <a href="#">C1QC Products</a> )

## Target Details

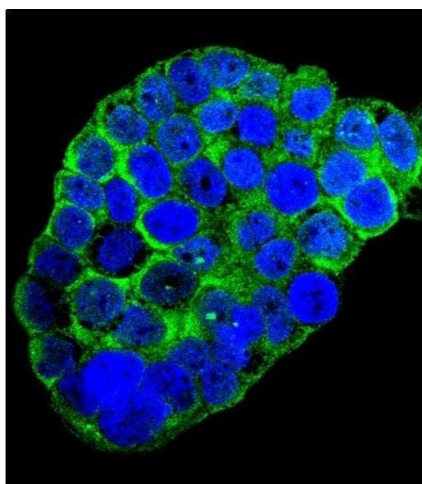
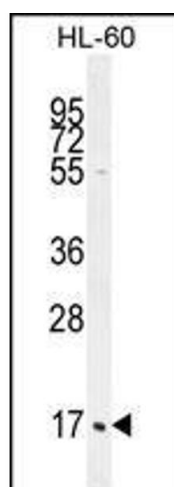
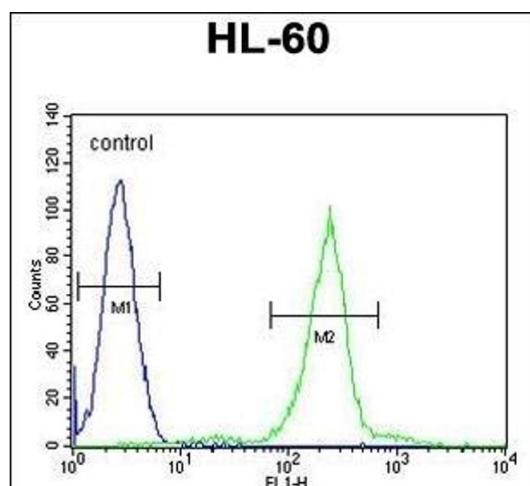
Background:	This gene encodes a major constituent of the human complement subcomponent C1q. C1q associates with C1r and C1s in order to yield the first component of the serum complement system. A deficiency in C1q has been associated with lupus erythematosus and glomerulonephritis. C1q is composed of 18 polypeptide chains: six A-chains, six B-chains, and six C-chains. Each chain contains a collagen-like region located near the N-terminus, and a C-terminal globular region. The A-, B-, and C-chains are arranged in the order A-C-B on chromosome 1. This gene encodes the C-chain polypeptide of human complement subcomponent C1q. Alternatively spliced transcript variants that encode the same protein have been found for this gene.
Molecular Weight:	25774
Gene ID:	714
NCBI Accession:	<a href="#">NP_001107573</a> , <a href="#">NP_758957</a>
UniProt:	<a href="#">P02747</a>
Pathways:	<a href="#">Complement System</a>

## Application Details

Application Notes:	IF: 1:10~50. WB: 1:1000. IHC-P: 1:10~50. FC: 1:10~50
Restrictions:	For Research Use only

## Handling

Format:	Liquid
Buffer:	Purified polyclonal antibody supplied in PBS with 0.09 % (W/V) sodium azide.
Preservative:	Sodium azide
Precaution of Use:	This product contains Sodium azide: a POISONOUS AND HAZARDOUS SUBSTANCE which should be handled by trained staff only.
Storage:	4 °C,-20 °C
Storage Comment:	Maintain refrigerated at 2-8 °C for up to 6 months. For long term storage store at -20 °C in small aliquots to prevent freeze-thaw cycles.
Expiry Date:	6 months



### Flow Cytometry

**Image 1.** C1QC Antibody (Center) (ABIN655873 and ABIN2845277) flow cytometric analysis of HL-60 cells (right histogram) compared to a negative control cell (left histogram). FITC-conjugated goat-anti-rabbit secondary antibodies were used for the analysis.

### Western Blotting

**Image 2.** C1QC Antibody (Center) (ABIN655873 and ABIN2845277) western blot analysis in HL-60 cell line lysates (35 µg/lane). This demonstrates the C1QC antibody detected the C1QC protein (arrow).

### Immunofluorescence

**Image 3.** Confocal immunofluorescent analysis of C1QC Antibody (Center) (ABIN655873 and ABIN2845277) with WiDr cell followed by Alexa Fluor<sup>®</sup> 488-conjugated goat anti-rabbit IgG (green). DAPI was used to stain the cell nuclear (blue).

Please check the [product details page](#) for more images. Overall 4 images are available for ABIN655873.