

Datasheet for ABIN655881

**anti-TUBB2B antibody (N-Term)****3** Images[Go to Product page](#)

## Overview

Quantity:	400 µL
Target:	TUBB2B
Binding Specificity:	AA 12-39, N-Term
Reactivity:	Human, Mouse, Rat
Host:	Rabbit
Clonality:	Polyclonal
Conjugate:	This TUBB2B antibody is un-conjugated
Application:	Western Blotting (WB), Immunohistochemistry (Paraffin-embedded Sections) (IHC (p))

## Product Details

Immunogen:	This TUBB2B antibody is generated from rabbits immunized with a KLH conjugated synthetic peptide between 12-39 amino acids from the N-terminal region of human TUBB2B.
Clone:	RB31679
Isotype:	Ig Fraction
Predicted Reactivity:	C, Pr, B, X, Pig
Purification:	This antibody is purified through a protein A column, followed by peptide affinity purification.

## Target Details

Target:	TUBB2B
Alternative Name:	TUBB2B ( <a href="#">TUBB2B Products</a> )

## Target Details

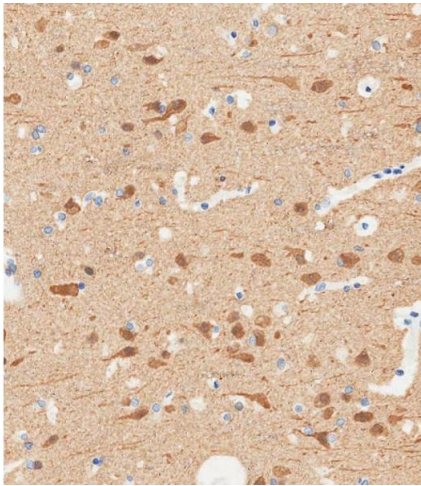
Background:	The protein encoded by this gene is a beta isoform of tubulin, which binds GTP and is a major component of microtubules. This gene is highly similar to TUBB2A and TUBB2C. Defects in this gene are a cause of asymmetric polymicrogyria. [provided by RefSeq].
Molecular Weight:	49953
Gene ID:	347733
NCBI Accession:	<a href="#">NP_821080</a>
UniProt:	<a href="#">Q9BVA1</a>
Pathways:	<a href="#">Microtubule Dynamics</a>

## Application Details

Application Notes:	WB: 1:4000. IHC-P-Leica: 1:2000
Restrictions:	For Research Use only

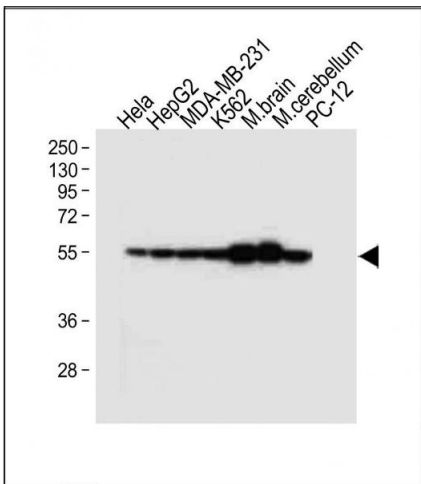
## Handling

Format:	Liquid
Buffer:	Purified polyclonal antibody supplied in PBS with 0.09 % (W/V) sodium azide.
Preservative:	Sodium azide
Precaution of Use:	This product contains Sodium azide: a POISONOUS AND HAZARDOUS SUBSTANCE which should be handled by trained staff only.
Storage:	4 °C,-20 °C
Storage Comment:	Maintain refrigerated at 2-8 °C for up to 6 months. For long term storage store at -20 °C in small aliquots to prevent freeze-thaw cycles.
Expiry Date:	6 months



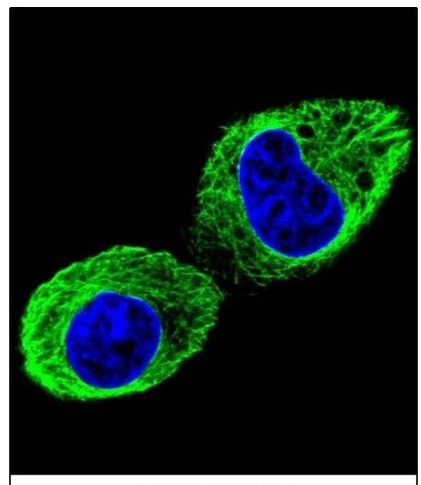
### Immunohistochemistry (Paraffin-embedded Sections)

**Image 1.** Immunohistochemical analysis of paraffin-embedded Human brain tissue using A performed on the Leica® BOND RXm. Tissue was fixed with formaldehyde at room temperature, antigen retrieval was by heat mediation with a EDTA buffer ( pH 9. 0). Samples were incubated with primary Antibody (1:2000) for 1 hours at room temperature. A undiluted biotinylated CRF Anti-Polyvalent HRP Polymer antibody was used as the secondary antibody.



### Western Blotting

**Image 2.** All lanes : Anti-TUBB2B Antibody (N-term) at 1:4000 dilution Lane 1: HeLa whole cell lysate Lane 2: HepG2 whole cell lysate Lane 3: MDA-MB-231 whole cell lysate Lane 4: K562 whole cell lysate Lane 5: Mouse brain tissue lysate Lane 6: Mouse cerebellum tissue lysate Lane 7: PC-12 whole cell lysate Lysates/proteins at 20 µg per lane. Secondary Goat Anti-Rabbit IgG, (H+L), Peroxidase conjugated at 1/10000 dilution. Predicted band size : 50 kDa Blocking/Dilution buffer: 5 % NFDm/TBST.



### Immunofluorescence

**Image 3.** Confocal immunofluorescent analysis of TUBB2B Antibody (N-term) (ABIN655881 and ABIN2845283) with HepG2 cell followed by Alexa Fluor 488-conjugated goat anti-rabbit IgG (green). DI was used to stain the cell nuclear (blue).