

Datasheet for ABIN655884  
**anti-GCLC antibody (N-Term)**

4 Images

1 Publication

[Go to Product page](#)

## Overview

Quantity:	400 µL
Target:	GCLC
Binding Specificity:	AA 1-30, N-Term
Reactivity:	Human
Host:	Rabbit
Clonality:	Polyclonal
Conjugate:	This GCLC antibody is un-conjugated
Application:	Western Blotting (WB), Immunofluorescence (IF), Flow Cytometry (FACS), Immunohistochemistry (Paraffin-embedded Sections) (IHC (p))

## Product Details

Immunogen:	This GCLC antibody is generated from rabbits immunized with a KLH conjugated synthetic peptide between 1-30 amino acids from the N-terminal region of human GCLC.
Clone:	RB31687
Isotype:	Ig Fraction
Purification:	This antibody is purified through a protein A column, followed by peptide affinity purification.

## Target Details

Target:	GCLC
Alternative Name:	GCLC ( <a href="#">GCLC Products</a> )

## Target Details

Background:	Glutamate-cysteine ligase, also known as gamma-glutamylcysteine synthetase is the first rate-limiting enzyme of glutathione synthesis. The enzyme consists of two subunits, a heavy catalytic subunit and a light regulatory subunit. This locus encodes the catalytic subunit, while the regulatory subunit is derived from a different gene located on chromosome 1p22-p21. Mutations at this locus have been associated with hemolytic anemia due to deficiency of gamma-glutamylcysteine synthetase and susceptibility to myocardial infarction.
Molecular Weight:	72766
Gene ID:	2729
NCBI Accession:	<a href="#">NP_001184044</a> , <a href="#">NP_001489</a>
UniProt:	<a href="#">P48506</a>
Pathways:	<a href="#">Cell RedoxHomeostasis</a>

## Application Details

Application Notes:	IF: 1:10~50. WB: 1:1000. IHC-P: 1:10~50. FC: 1:10~50
Restrictions:	For Research Use only

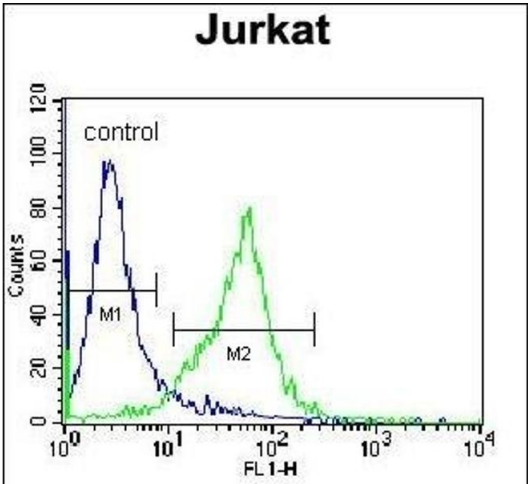
## Handling

Format:	Liquid
Buffer:	Purified polyclonal antibody supplied in PBS with 0.09 % (W/V) sodium azide.
Preservative:	Sodium azide
Precaution of Use:	This product contains Sodium azide: a POISONOUS AND HAZARDOUS SUBSTANCE which should be handled by trained staff only.
Storage:	4 °C,-20 °C
Storage Comment:	Maintain refrigerated at 2-8 °C for up to 6 months. For long term storage store at -20 °C in small aliquots to prevent freeze-thaw cycles.
Expiry Date:	6 months

## Publications

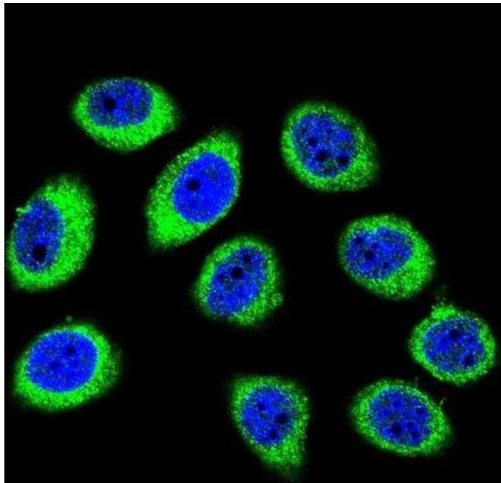
Product cited in:	Kawakubo-Yasukochi, Morioka, Hazekawa, Yasukochi, Nishinakagawa, Ono, Kawano, Nakamura, Nakashima: "miR-200c-3p spreads invasive capacity in human oral squamous cell
-------------------	---

carcinoma microenvironment." in: **Molecular carcinogenesis**, Vol. 57, Issue 2, pp. 295-302, (2018) ([PubMed](#)).



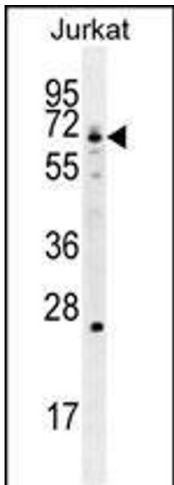
Flow Cytometry

**Image 1.** GCLC Antibody (N-term) (ABIN655884 and ABIN2845285) flow cytometric analysis of Jurkat cells (right histogram) compared to a negative control cell (left histogram). FITC-conjugated donkey-anti-rabbit secondary antibodies were used for the analysis.



Immunofluorescence

**Image 2.** Confocal immunofluorescent analysis of GCLC Antibody (N-term) (ABIN655884 and ABIN2845285) with U-251MG cell followed by Alexa Fluor 488-conjugated goat anti-rabbit IgG (green). DAPI was used to stain the cell nuclear (blue).



Western Blotting

**Image 3.** GCLC Antibody (N-term) (ABIN655884 and ABIN2845285) western blot analysis in Jurkat cell line lysates (35  $\mu$ g/lane). This demonstrates the GCLC antibody detected the GCLC protein (arrow).

Please check the [product details page](#) for more images. Overall 4 images are available for ABIN655884.