



[Go to Product page](#)

Datasheet for ABIN655886

anti-RAP1GDS1 antibody (AA 217-244)

2 Images

Overview

Quantity:	400 µL
Target:	RAP1GDS1
Binding Specificity:	AA 217-244
Reactivity:	Human
Host:	Rabbit
Clonality:	Polyclonal
Conjugate:	This RAP1GDS1 antibody is un-conjugated
Application:	Western Blotting (WB), Immunohistochemistry (Paraffin-embedded Sections) (IHC (p))

Product Details

Immunogen:	This RAP1GDS1 antibody is generated from rabbits immunized with a KLH conjugated synthetic peptide between 217-244 amino acids from the Central region of human RAP1GDS1.
Clone:	RB31690
Isotype:	Ig Fraction
Purification:	This antibody is purified through a protein A column, followed by peptide affinity purification.

Target Details

Target:	RAP1GDS1
Alternative Name:	RAP1GDS1 (RAP1GDS1 Products)
Background:	The smg GDP dissociation stimulator (smgGDS) protein is a stimulatory GDP/GTP exchange

Target Details

protein with GTPase activity (Riess et al., 1993 [PubMed 8262526]).

Molecular Weight: 66317

Gene ID: 5910

NCBI Accession: [NP_001093896](#), [NP_001093897](#), [NP_001093898](#), [NP_001093899](#), [NP_001093900](#), [NP_066982](#)

UniProt: [P52306](#)

Pathways: [SARS-CoV-2 Protein Interactome](#)

Application Details

Application Notes: WB: 1:1000. IHC-P: 1:10~50

Restrictions: For Research Use only

Handling

Format: Liquid

Buffer: Purified polyclonal antibody supplied in PBS with 0.09 % (W/V) sodium azide.

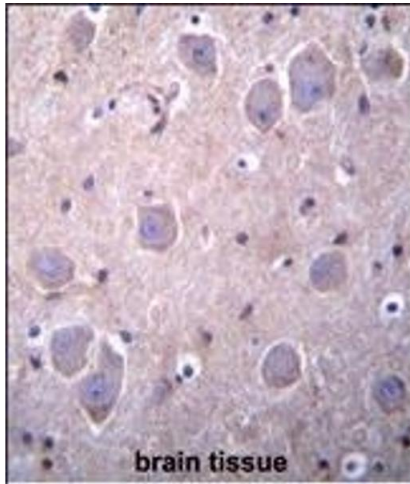
Preservative: Sodium azide

Precaution of Use: This product contains Sodium azide: a POISONOUS AND HAZARDOUS SUBSTANCE which should be handled by trained staff only.

Storage: 4 °C,-20 °C

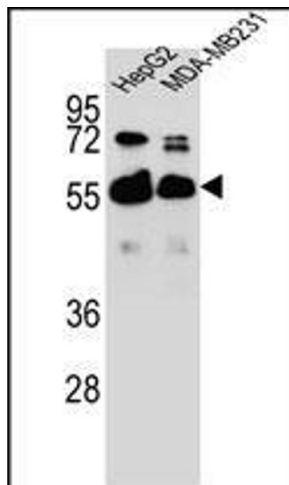
Storage Comment: Maintain refrigerated at 2-8 °C for up to 6 months. For long term storage store at -20 °C in small aliquots to prevent freeze-thaw cycles.

Expiry Date: 6 months



Immunohistochemistry (Paraffin-embedded Sections)

Image 1. RGDS1 Antibody (Center) 1945c immunohistochemistry analysis in formalin fixed and paraffin embedded human brain tissue followed by peroxidase conjugation of the secondary antibody and DAB staining. This data demonstrates the use of RGDS1 Antibody (Center) for immunohistochemistry. Clinical relevance has not been evaluated.



Western Blotting

Image 2. RGDS1 Antibody (Center) 1945c western blot analysis in HepG2, MDA-M cell line lysates (35 µg/lane). This demonstrates the RGDS1 antibody detected the RGDS1 protein (arrow).