

Datasheet for ABIN655892
anti-METTL2 antibody (C-Term)[Go to Product page](#)

3 Images

Overview

Quantity:	400 µL
Target:	METTL2
Binding Specificity:	AA 329-359, C-Term
Reactivity:	Human
Host:	Rabbit
Clonality:	Polyclonal
Conjugate:	This METTL2 antibody is un-conjugated
Application:	Western Blotting (WB), Immunofluorescence (IF), Immunohistochemistry (Paraffin-embedded Sections) (IHC (p))

Product Details

Immunogen:	This METTL2 antibody is generated from rabbits immunized with a KLH conjugated synthetic peptide between 329-359 amino acids from the C-terminal region of human METTL2.
Clone:	RB12378
Isotype:	Ig Fraction
Predicted Reactivity:	Zf, B, M
Purification:	This antibody is purified through a protein A column, followed by peptide affinity purification.

Target Details

Target:	METTL2
---------	--------

Target Details

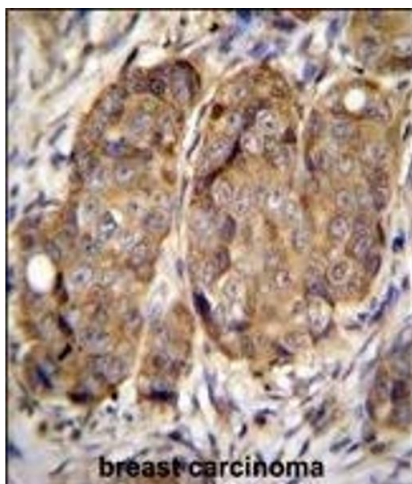
Alternative Name:	METTL2 (METTL2 Products)
Background:	METTL2A is probable methyltransferase (By similarity).
Molecular Weight:	43537
Gene ID:	339175
NCBI Accession:	NP_859076
UniProt:	Q96IZ6

Application Details

Application Notes:	IF: 1:10~50. WB: 1:1000. IHC-P: 1:50~100
Restrictions:	For Research Use only

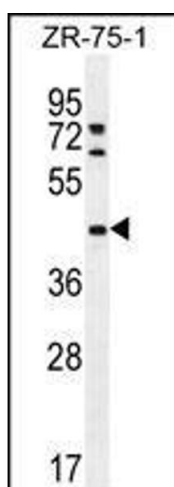
Handling

Format:	Liquid
Buffer:	Purified polyclonal antibody supplied in PBS with 0.09 % (W/V) sodium azide.
Preservative:	Sodium azide
Precaution of Use:	This product contains Sodium azide: a POISONOUS AND HAZARDOUS SUBSTANCE which should be handled by trained staff only.
Storage:	4 °C,-20 °C
Storage Comment:	Maintain refrigerated at 2-8 °C for up to 6 months. For long term storage store at -20 °C in small aliquots to prevent freeze-thaw cycles.
Expiry Date:	6 months



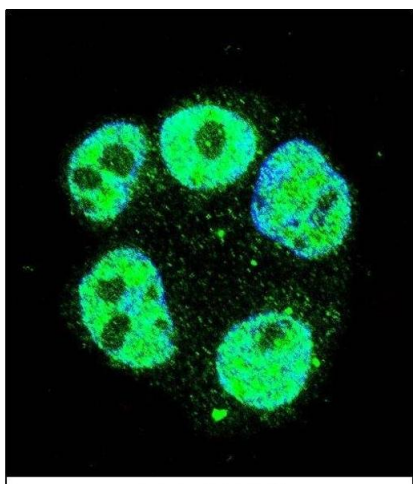
Immunohistochemistry (Paraffin-embedded Sections)

Image 1. METTL2 Antibody (C-term) (ABIN655892 and ABIN2845293) immunohistochemistry analysis in formalin fixed and paraffin embedded human breast carcinoma followed by peroxidase conjugation of the secondary antibody and DAB staining. This data demonstrates the use of METTL2 Antibody (C-term) for immunohistochemistry. Clinical relevance has not been evaluated.



Western Blotting

Image 2. METTL2 Antibody (C-term) (ABIN655892 and ABIN2845293) western blot analysis in ZR-75-1 cell line lysates (35 µg/lane). This demonstrates the METTL2 antibody detected the METTL2 protein (arrow).



Immunofluorescence

Image 3. Confocal immunofluorescent analysis of METTL2 Antibody (C-term) (ABIN655892 and ABIN2845293) with ZR-75-1 cell followed by Alexa Fluor 488-conjugated goat anti-rabbit IgG (green). DAPI was used to stain the cell nuclear (blue).