

Datasheet for ABIN655896
anti-T-Box 6 antibody (C-Term)

2 Images

[Go to Product page](#)

Overview

Quantity:	400 µL
Target:	T-Box 6 (TBX6)
Binding Specificity:	AA 143-172, C-Term
Reactivity:	Human
Host:	Rabbit
Clonality:	Polyclonal
Conjugate:	This T-Box 6 antibody is un-conjugated
Application:	Western Blotting (WB), Flow Cytometry (FACS)

Product Details

Immunogen:	This TBX6 antibody is generated from rabbits immunized with a KLH conjugated synthetic peptide between 143-172 amino acids from the C-terminal region of human TBX6.
Clone:	RB14024
Isotype:	Ig Fraction
Predicted Reactivity:	M
Purification:	This antibody is prepared by Saturated Ammonium Sulfate (SAS) precipitation followed by dialysis against PBS.

Target Details

Target:	T-Box 6 (TBX6)
---------	----------------

Target Details

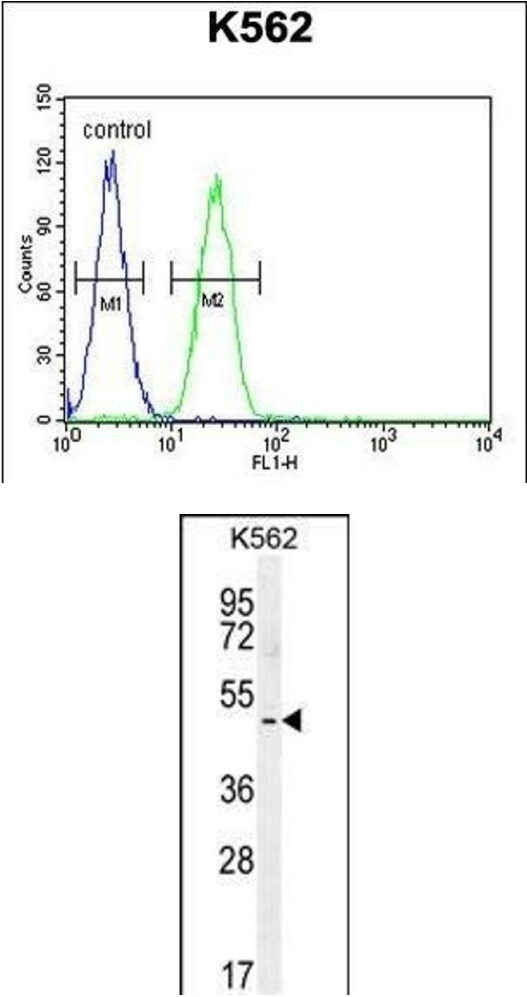
Alternative Name:	TBX6 (TBX6 Products)
Background:	This gene is a member of a phylogenetically conserved family of genes that share a common DNA-binding domain, the T-box. T-box genes encode transcription factors involved in the regulation of developmental processes. Knockout studies in mice indicate that this gene is important for specification of paraxial mesoderm structures.
Molecular Weight:	47045
Gene ID:	6911
NCBI Accession:	NP_004599
UniProt:	O95947

Application Details

Application Notes:	WB: 1:1000. FC: 1:10~50
Restrictions:	For Research Use only

Handling

Format:	Liquid
Buffer:	Purified polyclonal antibody supplied in PBS with 0.09 % (W/V) sodium azide.
Preservative:	Sodium azide
Precaution of Use:	This product contains Sodium azide: a POISONOUS AND HAZARDOUS SUBSTANCE which should be handled by trained staff only.
Storage:	4 °C,-20 °C
Storage Comment:	Maintain refrigerated at 2-8 °C for up to 6 months. For long term storage store at -20 °C in small aliquots to prevent freeze-thaw cycles.
Expiry Date:	6 months



Flow Cytometry

Image 1. TBX6 Antibody (C-term) (ABIN655896 and ABIN2845296) flow cytometric analysis of K562 cells (right histogram) compared to a negative control cell (left histogram). FITC-conjugated goat-anti-rabbit secondary antibodies were used for the analysis.

Western Blotting

Image 2. TBX6 Antibody (C-term) (ABIN655896 and ABIN2845296) western blot analysis in K562 cell line lysates (35 µg/lane). This demonstrates the TBX6 antibody detected the TBX6 protein (arrow).