

Datasheet for ABIN655898  
**anti-KLF4 antibody (C-Term)**



[Go to Product page](#)

3 Images

## Overview

Quantity:	400 µL
Target:	KLF4
Binding Specificity:	AA 394-421, C-Term
Reactivity:	Human
Host:	Rabbit
Clonality:	Polyclonal
Conjugate:	This KLF4 antibody is un-conjugated
Application:	Western Blotting (WB), Immunofluorescence (IF), Flow Cytometry (FACS)

## Product Details

Immunogen:	This KLF4 antibody is generated from rabbits immunized with a KLH conjugated synthetic peptide between 394-421 amino acids from the C-terminal region of human KLF4.
Clone:	RB14356
Isotype:	Ig Fraction
Purification:	This antibody is prepared by Saturated Ammonium Sulfate (SAS) precipitation followed by dialysis against PBS.

## Target Details

Target:	KLF4
Alternative Name:	KLF4 ( <a href="#">KLF4 Products</a> )

## Target Details

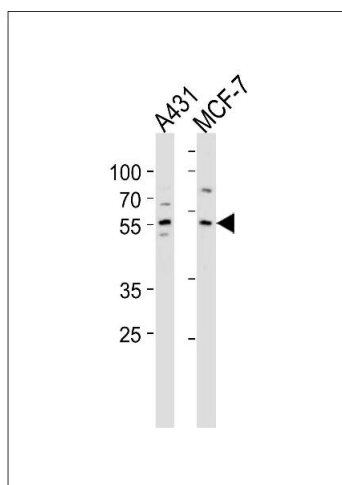
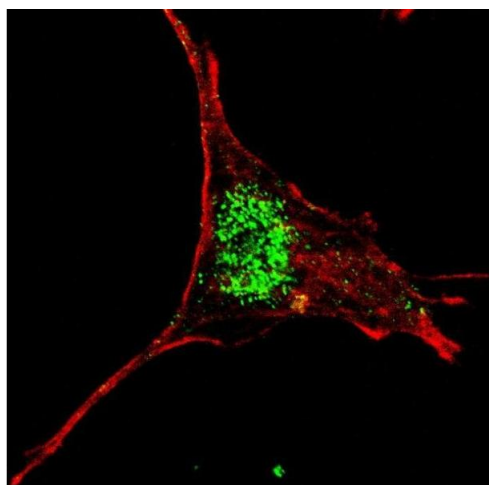
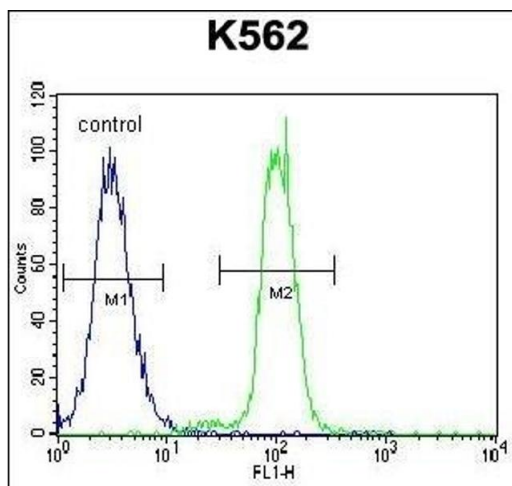
Background:	KLF4 is a transcription factor which acts as both an activator and repressor. Binds the CACCC core sequence. Binds to multiple sites in the 5'-flanking region of its own gene and can activate its own transcription. Required for establishing the barrier function of the skin and for postnatal maturation and maintenance of the ocular surface. Involved in the differentiation of epithelial cells and may also function in skeletal and kidney development.
Molecular Weight:	54671
Gene ID:	9314
NCBI Accession:	<a href="#">NP_004226</a>
UniProt:	<a href="#">O43474</a>
Pathways:	<a href="#">Peptide Hormone Metabolism</a> , <a href="#">Stem Cell Maintenance</a>

## Application Details

Application Notes:	IF: 1:10~50. WB: 1:1000. FC: 1:10~50
Restrictions:	For Research Use only

## Handling

Format:	Liquid
Buffer:	Purified polyclonal antibody supplied in PBS with 0.09 % (W/V) sodium azide.
Preservative:	Sodium azide
Precaution of Use:	This product contains Sodium azide: a POISONOUS AND HAZARDOUS SUBSTANCE which should be handled by trained staff only.
Storage:	4 °C, -20 °C
Storage Comment:	Maintain refrigerated at 2-8 °C for up to 6 months. For long term storage store at -20 °C in small aliquots to prevent freeze-thaw cycles.
Expiry Date:	6 months



### Flow Cytometry

**Image 1.** KLF4 Antibody (C-term) (ABIN655898 and ABIN2845298) flow cytometric analysis of K562 cells (right histogram) compared to a negative control cell (left histogram). FITC-conjugated goat-anti-rabbit secondary antibodies were used for the analysis.

### Immunofluorescence

**Image 2.** Fluorescent confocal image of SY5Y cells stained with (ABIN655898 and ABIN2845298) KLF4 (C-term) antibody. SY5Y cells were fixed with 4 % PFA (20 min), permeabilized with Triton X-100 (0.2 %, 30 min), then incubated with (ABIN655898 and ABIN2845298) KLF4 (C-term) primary antibody (1:200, 2 h at room temperature). For secondary antibody, Alexa Fluor® 488 conjugated donkey anti-rabbit antibody (green) was used (1:1000, 1h). Cytoplasmic actin was counterstained with Alexa Fluor® 555 (red) conjugated Phalloidin (5.25  $\mu$ M, 25 min). KLF4 immunoreactivity is localized very specifically to the nuclei of the SY5Y cells.

### Western Blotting

**Image 3.** KLF4 Antibody (C-term) (ABIN655898 and ABIN2845298) western blot analysis in A431, MCF-7 cell line lysates (35  $\mu$ g/lane). This demonstrates the KLF4 antibody detected the KLF4 protein (arrow).