

Datasheet for ABIN655905
anti-MSI1 antibody (N-Term)

3 Images

[Go to Product page](#)

Overview

Quantity:	400 µL
Target:	MSI1
Binding Specificity:	AA 67-93, N-Term
Reactivity:	Human
Host:	Rabbit
Clonality:	Polyclonal
Conjugate:	This MSI1 antibody is un-conjugated
Application:	Western Blotting (WB), Flow Cytometry (FACS), Immunohistochemistry (Paraffin-embedded Sections) (IHC (p))

Product Details

Immunogen:	This MSI1 antibody is generated from rabbits immunized with a KLH conjugated synthetic peptide between 67-93 amino acids from the N-terminal region of human MSI1.
Clone:	RB19177
Isotype:	Ig Fraction
Predicted Reactivity:	M, Rat
Purification:	This antibody is purified through a protein A column, followed by peptide affinity purification.

Target Details

Target:	MSI1
---------	------

Target Details

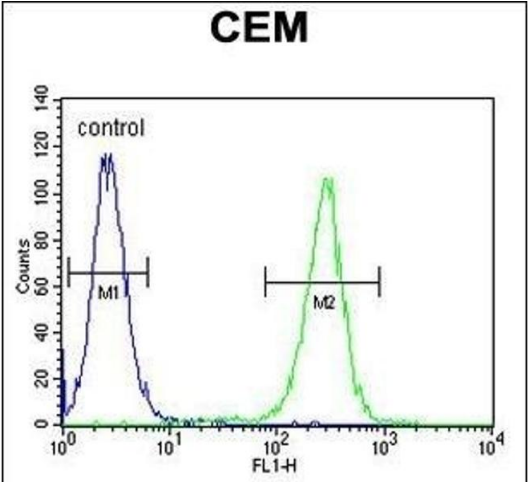
Alternative Name:	MSI1 (MSI1 Products)
Background:	This gene encodes a protein containing two conserved tandem RNA recognition motifs. Similar proteins in other species function as RNA-binding proteins and play central roles in posttranscriptional gene regulation. Expression of this gene has been correlated with the grade of the malignancy and proliferative activity in gliomas and melanomas. A pseudogene for this gene is located on chromosome 11q13.
Molecular Weight:	39125
Gene ID:	4440
NCBI Accession:	NP_002433
UniProt:	O43347
Pathways:	Stem Cell Maintenance

Application Details

Application Notes:	WB: 1:1000. IHC-P: 1:50~100. FC: 1:10~50
Restrictions:	For Research Use only

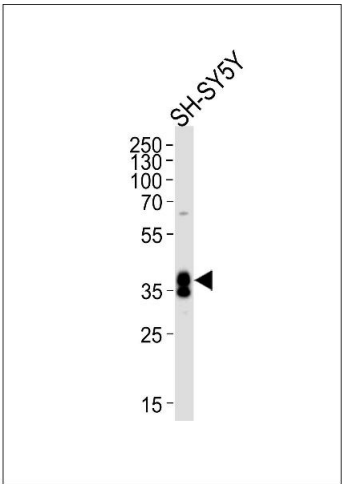
Handling

Format:	Liquid
Buffer:	Purified polyclonal antibody supplied in PBS with 0.09 % (W/V) sodium azide.
Preservative:	Sodium azide
Precaution of Use:	This product contains Sodium azide: a POISONOUS AND HAZARDOUS SUBSTANCE which should be handled by trained staff only.
Storage:	4 °C,-20 °C
Storage Comment:	Maintain refrigerated at 2-8 °C for up to 6 months. For long term storage store at -20 °C in small aliquots to prevent freeze-thaw cycles.
Expiry Date:	6 months



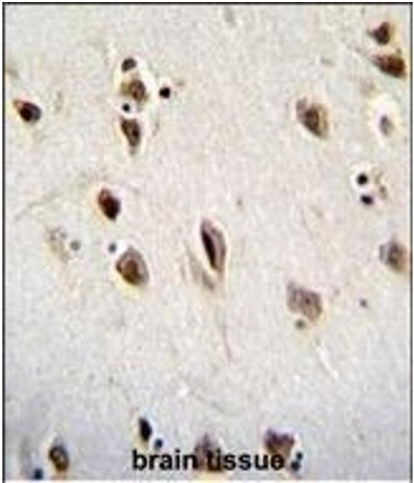
Flow Cytometry

Image 1. MSI1 Antibody (N-term) (ABIN655905 and ABIN2845305) flow cytometric analysis of CEM cells (right histogram) compared to a negative control cell (left histogram). FITC-conjugated goat-anti-rabbit secondary antibodies were used for the analysis.



Western Blotting

Image 2. Western blot analysis of lysate from SH-SY5Y cell line, using MSI1 Antibody (N-term) (ABIN655905 and ABIN2845305). (ABIN655905 and ABIN2845305) was diluted at 1:1000 at each lane. A goat anti-rabbit IgG H&L(HRP) at 1:5000 dilution was used as the secondary antibody. Lysate at 35 µg per lane.



Immunohistochemistry (Paraffin-embedded Sections)

Image 3. MSI1 Antibody (N-term) (ABIN655905 and ABIN2845305) immunohistochemistry analysis in formalin fixed and paraffin embedded human brain tissue followed by peroxidase conjugation of the secondary antibody and DAB staining. This data demonstrates the use of MSI1 Antibody (N-term) for immunohistochemistry. Clinical relevance has not been evaluated.