

Datasheet for ABIN655913
anti-FOLH1B antibody (C-Term)[Go to Product page](#)

2 Images

Overview

Quantity:	400 µL
Target:	FOLH1B
Binding Specificity:	AA 395-423, C-Term
Reactivity:	Human
Host:	Rabbit
Clonality:	Polyclonal
Conjugate:	This FOLH1B antibody is un-conjugated
Application:	Western Blotting (WB), Flow Cytometry (FACS)

Product Details

Immunogen:	This PSMAL antibody is generated from rabbits immunized with a KLH conjugated synthetic peptide between 395-423 amino acids from the C-terminal region of human PSMAL.
Clone:	RB20849
Isotype:	Ig Fraction
Purification:	This antibody is purified through a protein A column, followed by peptide affinity purification.

Target Details

Target:	FOLH1B
Alternative Name:	PSMAL (FOLH1B Products)
Background:	FOLH1B has both folate hydrolase and N-acetylated-alpha-linked-acidic dipeptidase

Target Details

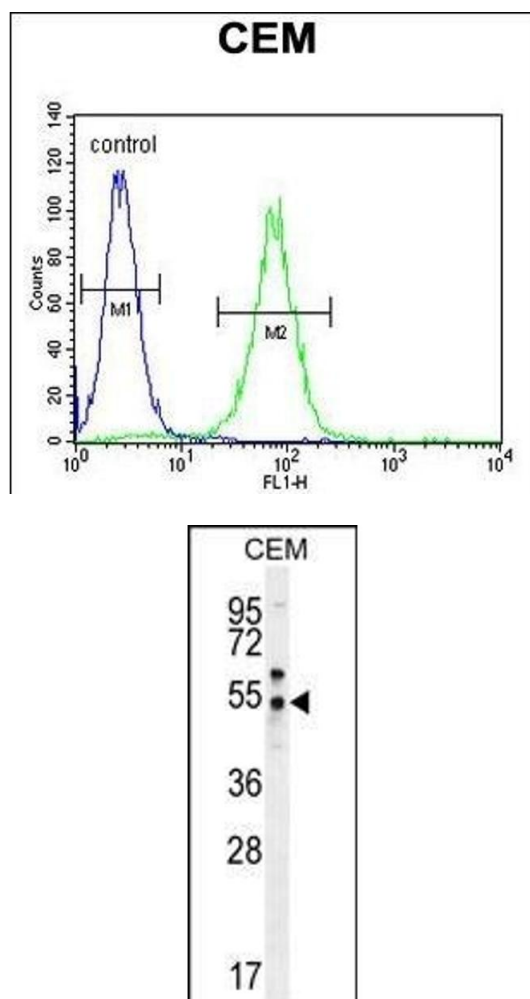
	(NAALADase) activity (By similarity) and exhibits a dipeptidyl-peptidase IV type activity (By similarity).
Molecular Weight:	50045
Gene ID:	219595
NCBI Accession:	NP_710163
UniProt:	Q9HBA9

Application Details

Application Notes:	WB: 1:1000. FC: 1:10~50
Restrictions:	For Research Use only

Handling

Format:	Liquid
Buffer:	Purified polyclonal antibody supplied in PBS with 0.09 % (W/V) sodium azide.
Preservative:	Sodium azide
Precaution of Use:	This product contains Sodium azide: a POISONOUS AND HAZARDOUS SUBSTANCE which should be handled by trained staff only.
Storage:	4 °C,-20 °C
Storage Comment:	Maintain refrigerated at 2-8 °C for up to 6 months. For long term storage store at -20 °C in small aliquots to prevent freeze-thaw cycles.
Expiry Date:	6 months



Flow Cytometry

Image 1. PSL Antibody (C-term) (ABIN655913 and ABIN2845312) flow cytometric analysis of CEM cells (right histogram) compared to a negative control cell (left histogram). FITC-conjugated goat-anti-rabbit secondary antibodies were used for the analysis.

Western Blotting

Image 2. PSL Antibody (C-term) (ABIN655913 and ABIN2845312) western blot analysis in CEM cell line lysates (35 μ g/lane). This demonstrates the PSL antibody detected the PSL protein (arrow).