



Datasheet for ABIN655915
anti-AKT1 antibody (C-Term)



[Go to Product page](#)

5 Images

Overview

Quantity:	400 µL
Target:	AKT1
Binding Specificity:	AA 428-457, C-Term
Reactivity:	Human, Mouse
Host:	Rabbit
Clonality:	Polyclonal
Conjugate:	This AKT1 antibody is un-conjugated
Application:	Western Blotting (WB), Immunofluorescence (IF), Immunohistochemistry (Paraffin-embedded Sections) (IHC (p)), Flow Cytometry (FACS)

Product Details

Immunogen:	This AKT1 antibody is generated from rabbits immunized with a KLH conjugated synthetic peptide between 428-457 amino acids from the C-terminal region of human AKT1.
Clone:	RB29255
Isotype:	Ig Fraction
Predicted Reactivity:	B, Rat
Purification:	This antibody is purified through a protein A column, followed by peptide affinity purification.

Target Details

Target:	AKT1
---------	------

Target Details

Alternative Name: [AKT1 \(AKT1 Products\)](#)

Background: The serine-threonine protein kinase encoded by the AKT1 gene is catalytically inactive in serum-starved primary and immortalized fibroblasts. AKT1 and the related AKT2 are activated by platelet-derived growth factor. The activation is rapid and specific, and it is abrogated by mutations in the pleckstrin homology domain of AKT1. It was shown that the activation occurs through phosphatidylinositol 3-kinase. In the developing nervous system AKT is a critical mediator of growth factor-induced neuronal survival. Survival factors can suppress apoptosis in a transcription-independent manner by activating the serine/threonine kinase AKT1, which then phosphorylates and inactivates components of the apoptotic machinery. Multiple alternatively spliced transcript variants have been found for this gene. [provided by RefSeq].

Molecular Weight: 55686

Gene ID: 207

NCBI Accession: [NP_001014431](#), [NP_001014432](#), [NP_005154](#)

UniProt: [P31749](#)

Pathways: [PI3K-Akt Signaling](#), [RTK Signaling](#), [TCR Signaling](#), [AMPK Signaling](#), [Interferon-gamma Pathway](#), [TLR Signaling](#), [Fc-epsilon Receptor Signaling Pathway](#), [EGFR Signaling Pathway](#), [Neurotrophin Signaling Pathway](#), [Response to Water Deprivation](#), [Regulation of Actin Filament Polymerization](#), [Carbohydrate Homeostasis](#), [Glycosaminoglycan Metabolic Process](#), [Cellular Glucan Metabolic Process](#), [Regulation of Muscle Cell Differentiation](#), [Cell-Cell Junction Organization](#), [Regulation of Cell Size](#), [Skeletal Muscle Fiber Development](#), [Regulation of Carbohydrate Metabolic Process](#), [Hepatitis C](#), [Protein targeting to Nucleus](#), [CXCR4-mediated Signaling Events](#), [Signaling Events mediated by VEGFR1 and VEGFR2](#), [Negative Regulation of intrinsic apoptotic Signaling](#), [Thromboxane A2 Receptor Signaling](#), [Signaling of Hepatocyte Growth Factor Receptor](#), [Positive Regulation of fat Cell Differentiation](#), [VEGFR1 Specific Signals](#), [VEGF Signaling](#), [Warburg Effect](#)

Application Details

Application Notes: IF: 1:10~50. WB: 1:1000. WB: 1:1000. IHC-P: 1:10~50. FC: 1:10~50

Restrictions: For Research Use only

Handling

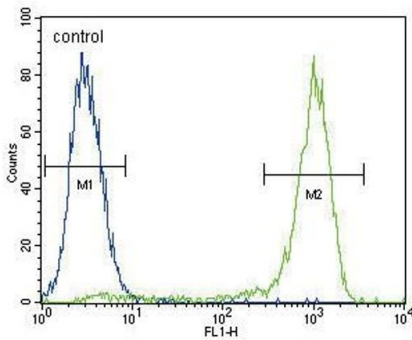
Format: Liquid

Buffer: Purified polyclonal antibody supplied in PBS with 0.09 % (W/V) sodium azide.

Handling

Preservative:	Sodium azide
Precaution of Use:	This product contains Sodium azide: a POISONOUS AND HAZARDOUS SUBSTANCE which should be handled by trained staff only.
Storage:	4 °C,-20 °C
Storage Comment:	Maintain refrigerated at 2-8 °C for up to 6 months. For long term storage store at -20 °C in small aliquots to prevent freeze-thaw cycles.
Expiry Date:	6 months

Images



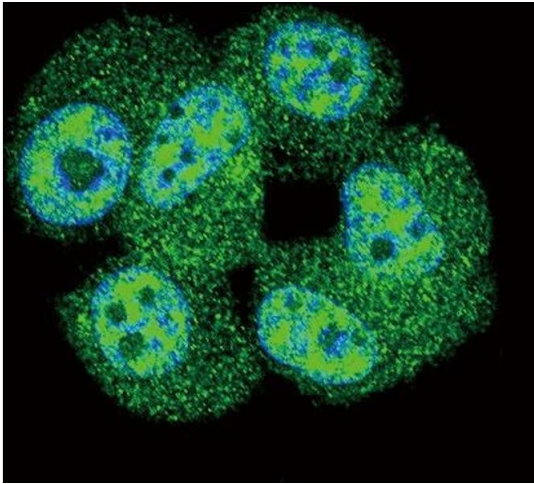
Flow Cytometry

Image 1. AKT1 Antibody (C-term) (ABIN655915 and ABIN2845314) flow cytometric analysis of MCF-7 cells (right histogram) compared to a negative control cell (left histogram).FITC-conjugated goat-anti-rabbit secondary antibodies were used for the analysis.



Western Blotting

Image 2. AKT1 Antibody (p) (ABIN655915 and ABIN2845314) western blot analysis in mouse cerebellum tissue lysates (35 µg/lane).This demonstrates the AKT1 antibody detected the AKT1 protein (arrow).



Immunofluorescence

Image 3. Confocal immunofluorescent analysis of AKT1 Antibody (C-term) (ABIN655915 and ABIN2845314) with MCF-7 cell followed by Alexa Fluor 488-conjugated goat anti-rabbit IgG (green).DI was used to stain the cell nuclear (blue).

Please check the [product details page](#) for more images. Overall 5 images are available for ABIN655915.