

Datasheet for ABIN655930  
**anti-CCDC153 antibody (N-Term)**

## 3 Images

[Go to Product page](#)

## Overview

Quantity:	400 µL
Target:	CCDC153
Binding Specificity:	AA 32-60, N-Term
Reactivity:	Human
Host:	Rabbit
Clonality:	Polyclonal
Conjugate:	This CCDC153 antibody is un-conjugated
Application:	Western Blotting (WB), Immunofluorescence (IF), Immunohistochemistry (Paraffin-embedded Sections) (IHC (p))

## Product Details

Immunogen:	This CCDC153 antibody is generated from rabbits immunized with a KLH conjugated synthetic peptide between 32-60 amino acids from the N-terminal region of human CCDC153.
Clone:	RB29918
Isotype:	Ig Fraction
Purification:	This antibody is purified through a protein A column, followed by peptide affinity purification.

## Target Details

Target:	CCDC153
Alternative Name:	CCDC153 ( <a href="#">CCDC153 Products</a> )

## Target Details

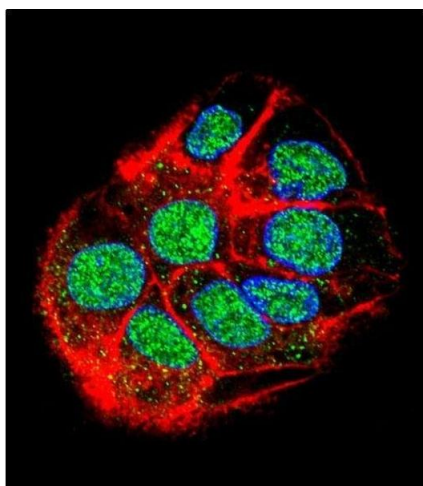
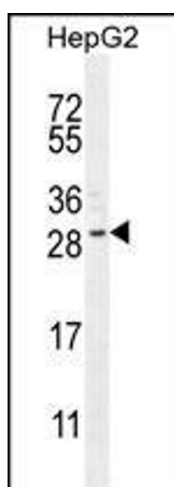
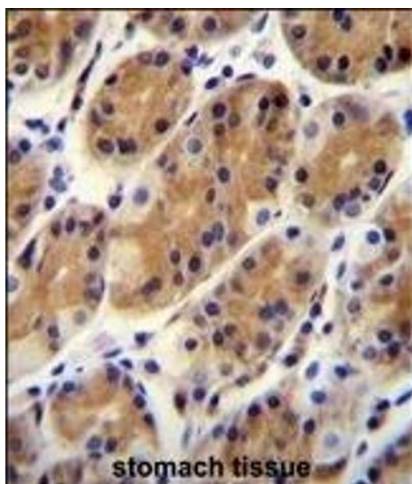
Background:	The function of CCDC153 remains unknown.
Molecular Weight:	23858
Gene ID:	283152
NCBI Accession:	<a href="#">NP_001138490</a>
UniProt:	<a href="#">Q494R4</a>

## Application Details

Application Notes:	IF: 1:10~50. WB: 1:1000. IHC-P: 1:10~50
Restrictions:	For Research Use only

## Handling

Format:	Liquid
Buffer:	Purified polyclonal antibody supplied in PBS with 0.09 % (W/V) sodium azide.
Preservative:	Sodium azide
Precaution of Use:	This product contains Sodium azide: a POISONOUS AND HAZARDOUS SUBSTANCE which should be handled by trained staff only.
Storage:	4 °C,-20 °C
Storage Comment:	Maintain refrigerated at 2-8 °C for up to 6 months. For long term storage store at -20 °C in small aliquots to prevent freeze-thaw cycles.
Expiry Date:	6 months



### Immunohistochemistry (Paraffin-embedded Sections)

**Image 1.** CCD Antibody (N-term) (ABIN655930 and ABIN2845323) immunohistochemistry analysis in formalin fixed and paraffin embedded human stomach tissue followed by peroxidase conjugation of the secondary antibody and DAB staining. This data demonstrates the use of CCD Antibody (N-term) for immunohistochemistry. Clinical relevance has not been evaluated.

### Western Blotting

**Image 2.** CCD Antibody (N-term) (ABIN655930 and ABIN2845323) western blot analysis in HepG2 cell line lysates (35 µg/lane). This demonstrates the CCD antibody detected the CCD protein (arrow).

### Immunofluorescence

**Image 3.** Confocal immunofluorescent analysis of CCD Antibody (N-term) (ABIN655930 and ABIN2845323) with HepG2 cell followed by Alexa Fluor 488-conjugated goat anti-rabbit IgG (green). Actin filaments have been labeled with Alexa Fluor 555 phalloidin (red). DAPI was used to stain the cell nuclei (blue).