

Datasheet for ABIN655943
anti-PLCL2 antibody (C-Term)[Go to Product page](#)

4 Images

Overview

Quantity:	400 µL
Target:	PLCL2
Binding Specificity:	AA 1099-1126, C-Term
Reactivity:	Human
Host:	Rabbit
Clonality:	Polyclonal
Conjugate:	This PLCL2 antibody is un-conjugated
Application:	Western Blotting (WB), Immunofluorescence (IF), Flow Cytometry (FACS), Immunohistochemistry (Paraffin-embedded Sections) (IHC (p))

Product Details

Immunogen:	This PLCL2 antibody is generated from rabbits immunized with a KLH conjugated synthetic peptide between 1099-1126 amino acids from the C-terminal region of human PLCL2.
Clone:	RB31611
Isotype:	Ig Fraction
Purification:	This antibody is purified through a protein A column, followed by peptide affinity purification.

Target Details

Target:	PLCL2
Alternative Name:	PLCL2 (PLCL2 Products)

Target Details

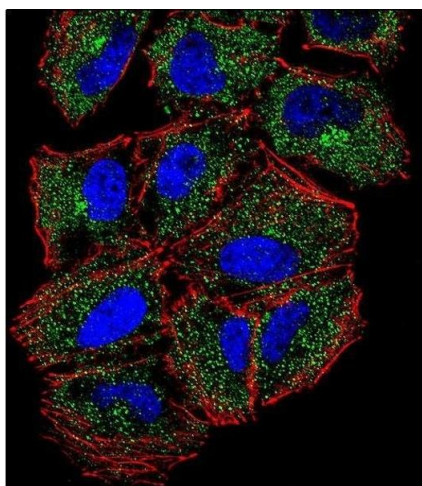
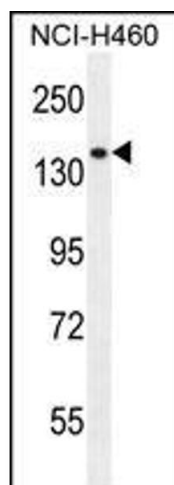
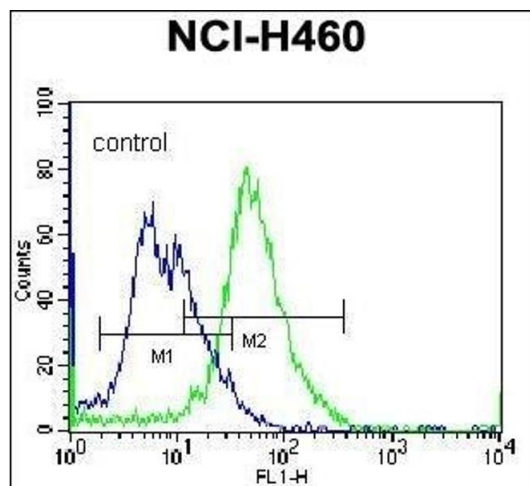
Background:	PLCL2 may play an role in the regulation of Ins(1,4,5)P3 around the endoplasmic reticulum (By similarity).
Molecular Weight:	125866
Gene ID:	23228
NCBI Accession:	NP_001137854 , NP_055999
UniProt:	Q9UPR0

Application Details

Application Notes:	IF: 1:10~50. WB: 1:1000. IHC-P: 1:10~50. FC: 1:10~50
Restrictions:	For Research Use only

Handling

Format:	Liquid
Buffer:	Purified polyclonal antibody supplied in PBS with 0.09 % (W/V) sodium azide.
Preservative:	Sodium azide
Precaution of Use:	This product contains Sodium azide: a POISONOUS AND HAZARDOUS SUBSTANCE which should be handled by trained staff only.
Storage:	4 °C,-20 °C
Storage Comment:	Maintain refrigerated at 2-8 °C for up to 6 months. For long term storage store at -20 °C in small aliquots to prevent freeze-thaw cycles.
Expiry Date:	6 months



Flow Cytometry

Image 1. PLCL2 Antibody (C-term) (ABIN655943 and ABIN2845332) flow cytometric analysis of NCI- cells (right histogram) compared to a negative control cell (left histogram). FITC-conjugated donkey-anti-rabbit secondary antibodies were used for the analysis.

Western Blotting

Image 2. PLCL2 Antibody (C-term) (ABIN655943 and ABIN2845332) western blot analysis in NCI- cell line lysates (35 µg/lane). This demonstrates the PLCL2 antibody detected the PLCL2 protein (arrow).

Immunofluorescence

Image 3. Confocal immunofluorescent analysis of PLCL2 Antibody (C-term) (ABIN655943 and ABIN2845332) with NCI- cell followed by Alexa Fluor 488-conjugated goat anti-rabbit IgG (green). Actin filaments have been labeled with Alexa Fluor 555 phalloidin (red). DAPI was used to stain the cell nuclear (blue).

Please check the [product details page](#) for more images. Overall 4 images are available for ABIN655943.