

Datasheet for ABIN655944

anti-beta Arrestin 1 antibody (C-Term)

5 Images

[Go to Product page](#)

Overview

Quantity:	400 µL
Target:	beta Arrestin 1 (ARRB1)
Binding Specificity:	AA 336-363, C-Term
Reactivity:	Human
Host:	Rabbit
Clonality:	Polyclonal
Conjugate:	This beta Arrestin 1 antibody is un-conjugated
Application:	Western Blotting (WB), Immunofluorescence (IF), Immunohistochemistry (Paraffin-embedded Sections) (IHC (p)), Flow Cytometry (FACS)

Product Details

Immunogen:	This ARRB1 antibody is generated from rabbits immunized with a KLH conjugated synthetic peptide between 336-363 amino acids from the C-terminal region of human ARRB1.
Clone:	RB31615
Isotype:	Ig Fraction
Predicted Reactivity:	B, M, Rb, Rat
Purification:	This antibody is purified through a protein A column, followed by peptide affinity purification.

Target Details

Target:	beta Arrestin 1 (ARRB1)
---------	-------------------------

Target Details

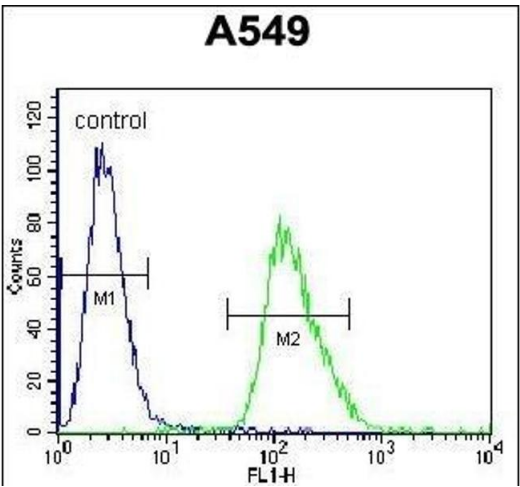
Alternative Name:	ARRB1 (ARRB1 Products)
Background:	Members of arrestin/beta-arrestin protein family are thought to participate in agonist-mediated desensitization of G-protein-coupled receptors and cause specific dampening of cellular responses to stimuli such as hormones, neurotransmitters, or sensory signals. Arrestin beta 1 is a cytosolic protein and acts as a cofactor in the beta-adrenergic receptor kinase (BARK) mediated desensitization of beta-adrenergic receptors. Besides the central nervous system, it is expressed at high levels in peripheral blood leukocytes, and thus the BARK/beta-arrestin system is believed to play a major role in regulating receptor-mediated immune functions. Alternatively spliced transcripts encoding different isoforms of arrestin beta 1 have been described, however, their exact functions are not known.
Molecular Weight:	47066
Gene ID:	408
NCBI Accession:	NP_004032 , NP_064647
UniProt:	P49407
Pathways:	Positive Regulation of Peptide Hormone Secretion , Nuclear Hormone Receptor Binding , cAMP Metabolic Process , Myometrial Relaxation and Contraction , Synaptic Membrane , Regulation of G-Protein Coupled Receptor Protein Signaling , Phototransduction

Application Details

Application Notes:	IF: 1:10~50. WB: 1:1000. IHC-P: 1:10~50. FC: 1:10~50
Restrictions:	For Research Use only

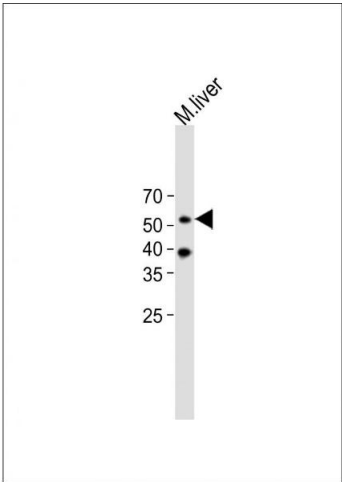
Handling

Format:	Liquid
Buffer:	Purified polyclonal antibody supplied in PBS with 0.09 % (W/V) sodium azide.
Preservative:	Sodium azide
Precaution of Use:	This product contains Sodium azide: a POISONOUS AND HAZARDOUS SUBSTANCE which should be handled by trained staff only.
Storage:	4 °C,-20 °C
Storage Comment:	Maintain refrigerated at 2-8 °C for up to 6 months. For long term storage store at -20 °C in small aliquots to prevent freeze-thaw cycles.



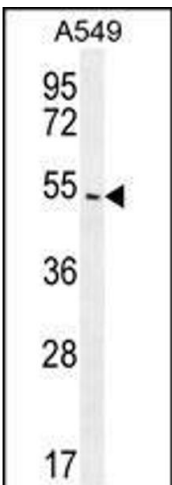
Flow Cytometry

Image 1. ARRB1 Antibody (C-term) (ABIN655944 and ABIN2845333) flow cytometric analysis of A549 cells (right histogram) compared to a negative control cell (left histogram). FITC-conjugated goat-anti-rabbit secondary antibodies were used for the analysis.



Western Blotting

Image 2. All lanes : Anti-ARRB1 Antibody (C-term) at 1:1000 dilution + mouse liver lysate Lysates/proteins at 20 µg per lane. Secondary Goat Anti-Rabbit IgG, (H+L), Peroxidase conjugated at 1/10000 dilution. Predicted band size : 50 kDa Blocking/Dilution buffer: 5 % NFDm/TBST.



Western Blotting

Image 3. ARRB1 Antibody (C-term) (ABIN655944 and ABIN2845333) western blot analysis in A549 cell line lysates (35 µg/lane). This demonstrates the ARRB1 antibody detected the ARRB1 protein (arrow).

Please check the [product details page](#) for more images. Overall 5 images are available for ABIN655944.