

Datasheet for ABIN655947
anti-IQCA1 antibody (C-Term)[Go to Product page](#)

2 Images

Overview

Quantity:	400 µL
Target:	IQCA1
Binding Specificity:	AA 794-822, C-Term
Reactivity:	Human
Host:	Rabbit
Clonality:	Polyclonal
Conjugate:	This IQCA1 antibody is un-conjugated
Application:	Western Blotting (WB), Immunohistochemistry (Paraffin-embedded Sections) (IHC (p))

Product Details

Immunogen:	This IQCA1 antibody is generated from rabbits immunized with a KLH conjugated synthetic peptide between 794-822 amino acids from the C-terminal region of human IQCA1.
Clone:	RB31637
Isotype:	Ig Fraction
Purification:	This antibody is purified through a protein A column, followed by peptide affinity purification.

Target Details

Target:	IQCA1
Alternative Name:	IQCA1 (IQCA1 Products)
Molecular Weight:	95341

Target Details

Gene ID:	79781
NCBI Accession:	NP_001257513 , NP_001257514 , NP_079002
UniProt:	Q86XH1

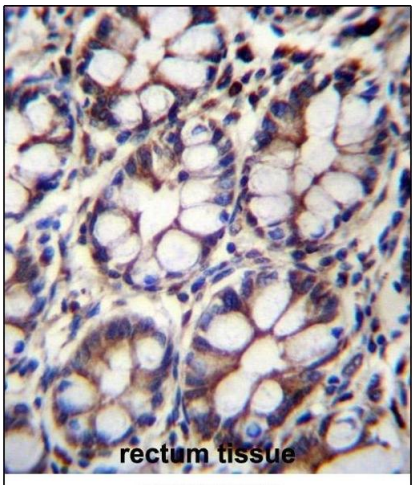
Application Details

Application Notes:	WB: 1:1000. IHC-P: 1:10~50
Restrictions:	For Research Use only

Handling

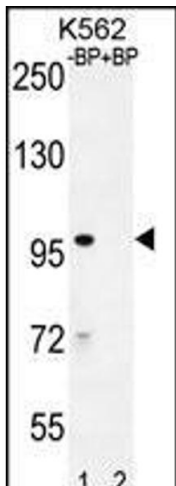
Format:	Liquid
Buffer:	Purified polyclonal antibody supplied in PBS with 0.09 % (W/V) sodium azide.
Preservative:	Sodium azide
Precaution of Use:	This product contains Sodium azide: a POISONOUS AND HAZARDOUS SUBSTANCE which should be handled by trained staff only.
Storage:	4 °C,-20 °C
Storage Comment:	Maintain refrigerated at 2-8 °C for up to 6 months. For long term storage store at -20 °C in small aliquots to prevent freeze-thaw cycles.
Expiry Date:	6 months

Images



Immunohistochemistry (Paraffin-embedded Sections)

Image 1. IQCA1 Antibody (C-term) (ABIN655947 and ABIN2845334) immunohistochemistry analysis in formalin fixed and paraffin embedded human rectum tissue followed by peroxidase conjugation of the secondary antibody and DAB staining. This data demonstrates the use of IQCA1 Antibody (C-term) for immunohistochemistry. Clinical relevance has not been evaluated.



Western Blotting

Image 2. Western blot analysis of IQCA1 Antibody (C-term) Pab (ABIN655947 and ABIN2845334) pre-incubated without (lane 1) and with (lane 2) blocking peptide in K562 cell line lysate. IQCA1 Antibody (C-term) (arrow) was detected using the purified Pab.