

Datasheet for ABIN655957  
**anti-PDE3B antibody (AA 400-427)**

## 3 Images

[Go to Product page](#)

## Overview

|                      |   |
|----------------------|---|
| Quantity:            | 400 µL  |
| Target:              | PDE3B   |
| Binding Specificity: | AA 400-427  |
| Reactivity:          | Human   |
| Host:                | Rabbit  |
| Clonality:           | Polyclonal  |
| Conjugate:           | This PDE3B antibody is un-conjugated                                  |
| Application:         | Western Blotting (WB), Immunofluorescence (IF), Flow Cytometry (FACS) |

## Product Details

|               |   |
|---------------|---|
| Immunogen:    | This PDE3B antibody is generated from rabbits immunized with a KLH conjugated synthetic peptide between 400-427 amino acids from the Central region of human PDE3B. |
| Clone:        | RB31670   |
| Isotype:      | Ig Fraction   |
| Purification: | This antibody is purified through a protein A column, followed by peptide affinity purification.  |

## Target Details

|                   |  |
|-------------------|--|
| Target:           | PDE3B  |
| Alternative Name: | PDE3B ( <a href="#">PDE3B Products</a> )   |
| Background:       | Cyclic nucleotide phosphodiesterase with a dual-specificity for the second messengers cAMP |

## Target Details

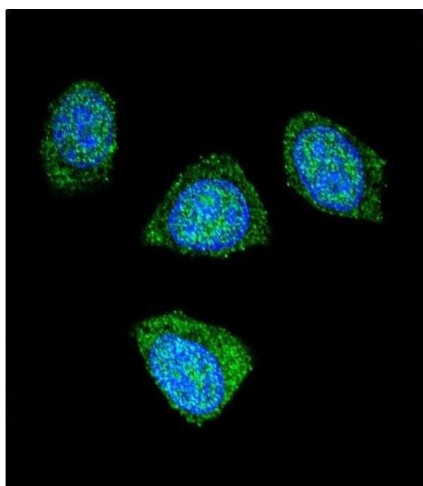
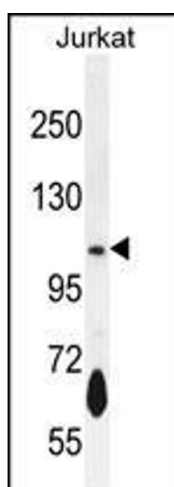
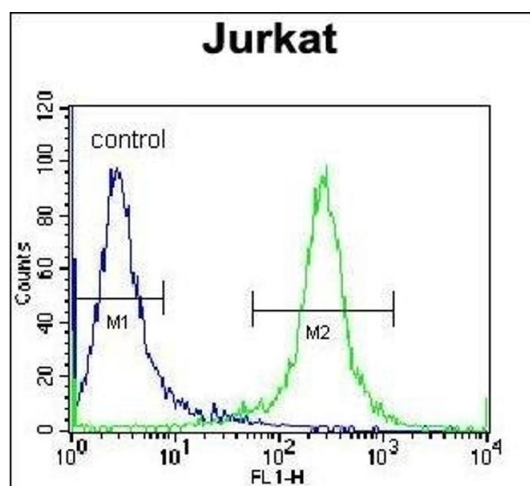
|                   |  |
|-------------------|--|
|                   | and cGMP, which are key regulators of many important physiological processes, PDE3B may play a role in fat metabolism.                       |
| Molecular Weight: | 124333   |
| Gene ID:          | 5140   |
| NCBI Accession:   | <a href="#">NP_000913</a>  |
| UniProt:          | <a href="#">Q13370</a>   |
| Pathways:         | <a href="#">Negative Regulation of Hormone Secretion</a> , <a href="#">Carbohydrate Homeostasis</a> , <a href="#">cAMP Metabolic Process</a> |

## Application Details

|                    |                                      |
|--------------------|--------------------------------------|
| Application Notes: | IF: 1:10~50. WB: 1:1000. FC: 1:10~50 |
| Restrictions:      | For Research Use only                |

## Handling

|                    |  |
|--------------------|--|
| Format:            | Liquid   |
| Buffer:            | Purified polyclonal antibody supplied in PBS with 0.09 % (W/V) sodium azide.   |
| Preservative:      | Sodium azide   |
| Precaution of Use: | This product contains Sodium azide: a POISONOUS AND HAZARDOUS SUBSTANCE which should be handled by trained staff only.                     |
| Storage:           | 4 °C,-20 °C  |
| Storage Comment:   | Maintain refrigerated at 2-8 °C for up to 6 months. For long term storage store at -20 °C in small aliquots to prevent freeze-thaw cycles. |
| Expiry Date:       | 6 months   |



### Flow Cytometry

**Image 1.** PDE3B Antibody (Center) (ABIN655957 and ABIN2845343) flow cytometric analysis of Jurkat cells (right histogram) compared to a negative control cell (left histogram). FITC-conjugated donkey-anti-rabbit secondary antibodies were used for the analysis.

### Western Blotting

**Image 2.** PDE3B Antibody (Center) (ABIN655957 and ABIN2845343) western blot analysis in Jurkat cell line lysates (35  $\mu$ g/lane). This demonstrates the PDE3B antibody detected the PDE3B protein (arrow).

### Immunofluorescence

**Image 3.** Confocal immunofluorescent analysis of PDE3B Antibody (Center) (ABIN655957 and ABIN2845343) with 293 cell followed by Alexa Fluor 488-conjugated goat anti-rabbit IgG (green). DAPI was used to stain the cell nuclear (blue).