

Datasheet for ABIN655958

**anti-Protocadherin 1 antibody (N-Term)****3** Images[Go to Product page](#)

## Overview

Quantity:	400 µL
Target:	Protocadherin 1 (PCDH1)
Binding Specificity:	AA 179-206, N-Term
Reactivity:	Human
Host:	Rabbit
Clonality:	Polyclonal
Conjugate:	This Protocadherin 1 antibody is un-conjugated
Application:	Western Blotting (WB), Immunofluorescence (IF), Immunohistochemistry (Paraffin-embedded Sections) (IHC (p))

## Product Details

Immunogen:	This PCDH1 antibody is generated from rabbits immunized with a KLH conjugated synthetic peptide between 179-206 amino acids from the N-terminal region of human PCDH1.
Clone:	RB31671
Isotype:	Ig Fraction
Purification:	This antibody is purified through a protein A column, followed by peptide affinity purification.

## Target Details

Target:	Protocadherin 1 (PCDH1)
Alternative Name:	PCDH1 ( <a href="#">PCDH1 Products</a> )

## Target Details

**Background:** This gene belongs to the protocadherin subfamily within the cadherin superfamily. The encoded protein is a membrane protein found at cell-cell boundaries. It is involved in neural cell adhesion, suggesting a possible role in neuronal development. The protein includes an extracellular region, containing 7 cadherin-like domains, a transmembrane region and a C-terminal cytoplasmic region. Cells expressing the protein showed cell aggregation activity. Alternative splicing occurs in this gene.

**Molecular Weight:** 114743

**Gene ID:** 5097

**NCBI Accession:** [NP\\_001265542](#), [NP\\_001265544](#), [NP\\_002578](#), [NP\\_115796](#)

**UniProt:** [Q08174](#)

## Application Details

**Application Notes:** IF: 1:10~50. WB: 1:1000. IHC-P: 1:10~50

**Restrictions:** For Research Use only

## Handling

**Format:** Liquid

**Buffer:** Purified polyclonal antibody supplied in PBS with 0.09 % (W/V) sodium azide.

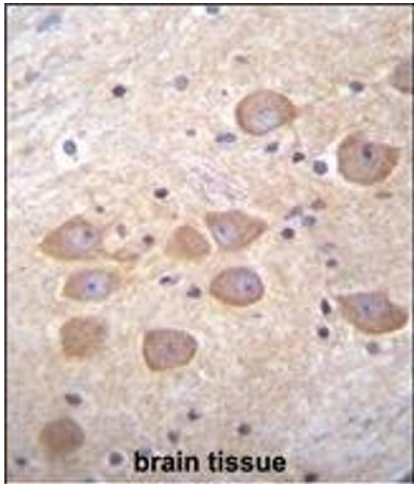
**Preservative:** Sodium azide

**Precaution of Use:** This product contains Sodium azide: a POISONOUS AND HAZARDOUS SUBSTANCE which should be handled by trained staff only.

**Storage:** 4 °C, -20 °C

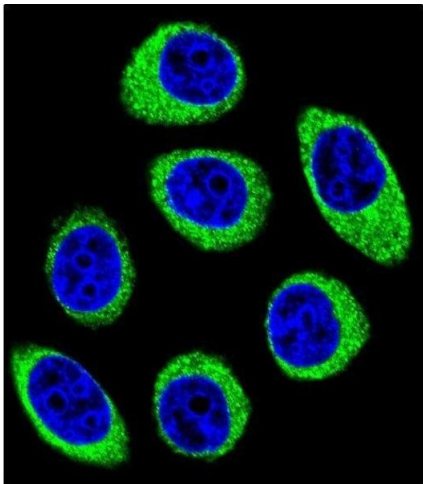
**Storage Comment:** Maintain refrigerated at 2-8 °C for up to 6 months. For long term storage store at -20 °C in small aliquots to prevent freeze-thaw cycles.

**Expiry Date:** 6 months



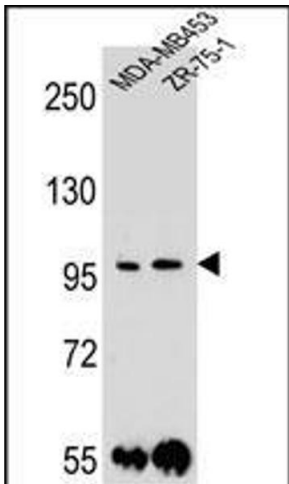
#### Immunohistochemistry (Paraffin-embedded Sections)

**Image 1.** PCDH1 Antibody (N-term) (ABIN655958 and ABIN2845344) immunohistochemistry analysis in formalin fixed and paraffin embedded human brain tissue followed by peroxidase conjugation of the secondary antibody and DAB staining. This data demonstrates the use of PCDH1 Antibody (N-term) for immunohistochemistry. Clinical relevance has not been evaluated.



#### Immunofluorescence

**Image 2.** Confocal immunofluorescent analysis of PCDH1 Antibody (N-term) (ABIN655958 and ABIN2845344) with U-251MG cell followed by Alexa Fluor 488-conjugated goat anti-rabbit IgG (green). DAPI was used to stain the cell nuclear (blue).



#### Western Blotting

**Image 3.** PCDH1 Antibody (N-term) (ABIN655958 and ABIN2845344) western blot analysis in MDA-MB-231, ZR-75-1 cell line lysates (35 µg/lane). This demonstrates the PCDH1 antibody detected the PCDH1 protein (arrow).