

Datasheet for ABIN655962
anti-CPB1 antibody (N-Term)

5 Images

[Go to Product page](#)

Overview

Quantity:	400 µL
Target:	CPB1
Binding Specificity:	AA 9-37, N-Term
Reactivity:	Human
Host:	Rabbit
Clonality:	Polyclonal
Conjugate:	This CPB1 antibody is un-conjugated
Application:	Western Blotting (WB), Immunofluorescence (IF), Flow Cytometry (FACS), Immunohistochemistry (Paraffin-embedded Sections) (IHC (p))

Product Details

Immunogen:	This CPB1 antibody is generated from rabbits immunized with a KLH conjugated synthetic peptide between 9-37 amino acids from the N-terminal region of human CPB1.
Clone:	RB31698
Isotype:	Ig Fraction
Purification:	This antibody is purified through a protein A column, followed by peptide affinity purification.

Target Details

Target:	CPB1
Alternative Name:	CPB1 (CPB1 Products)

Target Details

Background: Three different procarboxypeptidases A and two different procarboxypeptidases B have been isolated. The B1 and B2 forms differ from each other mainly in isoelectric point. Carboxypeptidase B1 is a highly tissue-specific protein and is a useful serum marker for acute pancreatitis and dysfunction of pancreatic transplants. It is not elevated in pancreatic carcinoma.

Molecular Weight: 47368

Gene ID: 1360

NCBI Accession: [NP_001862](#)

UniProt: [P15086](#)

Application Details

Application Notes: IF: 1:10~50. WB: 1:1000. WB: 1:1000. IHC-P: 1:10~50. FC: 1:10~50

Restrictions: For Research Use only

Handling

Format: Liquid

Buffer: Purified polyclonal antibody supplied in PBS with 0.09 % (W/V) sodium azide.

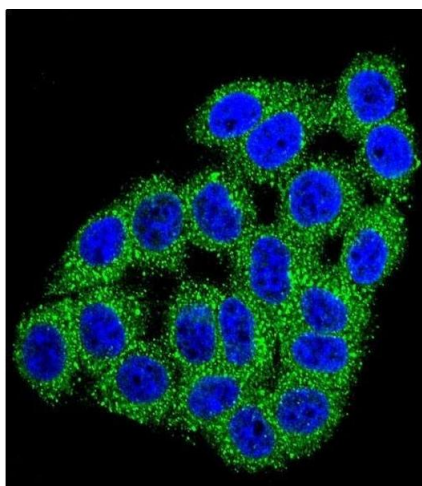
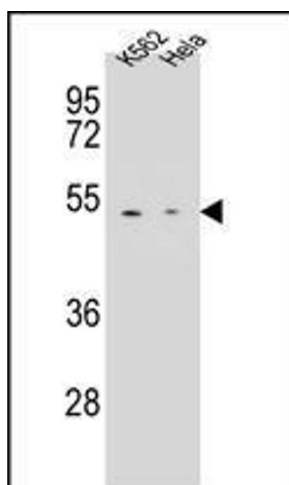
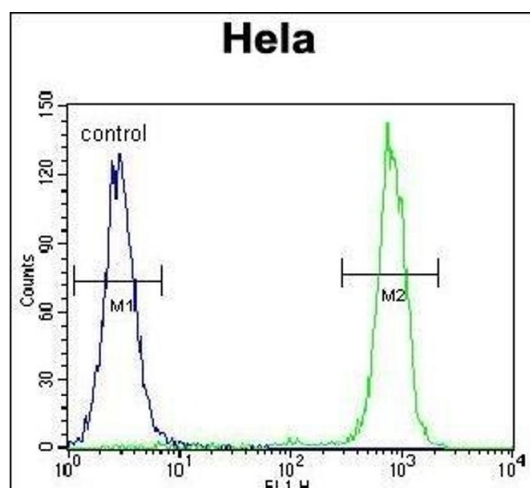
Preservative: Sodium azide

Precaution of Use: This product contains Sodium azide: a POISONOUS AND HAZARDOUS SUBSTANCE which should be handled by trained staff only.

Storage: 4 °C,-20 °C

Storage Comment: Maintain refrigerated at 2-8 °C for up to 6 months. For long term storage store at -20 °C in small aliquots to prevent freeze-thaw cycles.

Expiry Date: 6 months



Flow Cytometry

Image 1. CPB1 Antibody (N-term) (ABIN655962 and ABIN2845347) flow cytometric analysis of HeLa cells (right histogram) compared to a negative control cell (left histogram). FITC-conjugated goat-anti-rabbit secondary antibodies were used for the analysis.

Western Blotting

Image 2. CPB1 Antibody (N-term) (ABIN655962 and ABIN2845347) western blot analysis in K562, HeLa cell line lysates (35 μ g/lane). This demonstrates the CPB1 antibody detected the CPB1 protein (arrow).

Immunofluorescence

Image 3. Confocal immunofluorescent analysis of CPB1 Antibody (N-term) (ABIN655962 and ABIN2845347) with HeLa cell followed by Alexa Fluor 488-conjugated goat anti-rabbit IgG (green). DAPI was used to stain the cell nuclear (blue).

Please check the [product details page](#) for more images. Overall 5 images are available for ABIN655962.