

Datasheet for ABIN655978

anti-RPS19 antibody (AA 25-54)[Go to Product page](#)**2** Images

Overview

Quantity:	400 µL
Target:	RPS19
Binding Specificity:	AA 25-54
Reactivity:	Human
Host:	Rabbit
Clonality:	Polyclonal
Conjugate:	This RPS19 antibody is un-conjugated
Application:	Western Blotting (WB), Flow Cytometry (FACS)

Product Details

Immunogen:	This RPS19 antibody is generated from rabbits immunized with a KLH conjugated synthetic peptide between 25-54 amino acids from the Central region of human RPS19.
Clone:	RB31945
Isotype:	Ig Fraction
Predicted Reactivity:	B, M, Rat
Purification:	This antibody is purified through a protein A column, followed by peptide affinity purification.

Target Details

Target:	RPS19
Alternative Name:	RPS19 (RPS19 Products)

Target Details

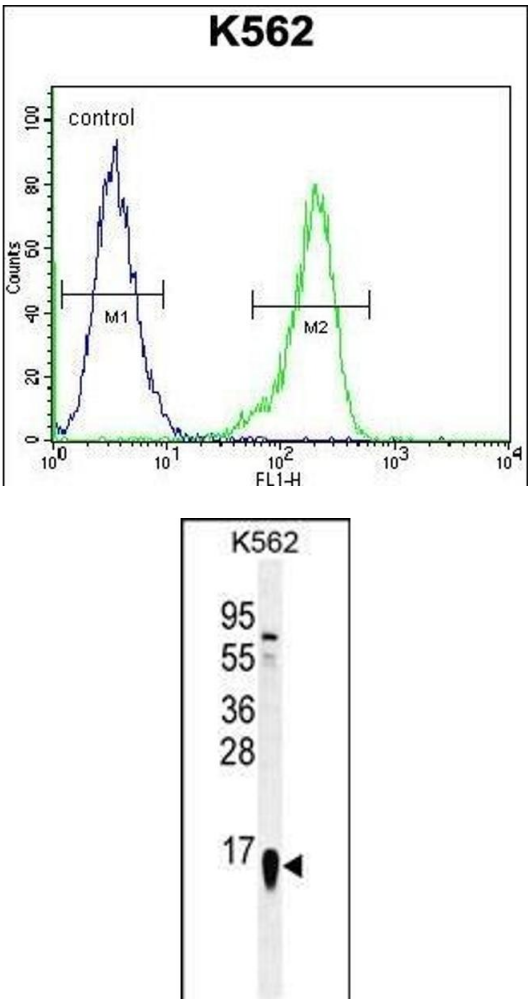
Background:	Ribosomes, the organelles that catalyze protein synthesis, consist of a small 40S subunit and a large 60S subunit. Together these subunits are composed of 4 RNA species and approximately 80 structurally distinct proteins. This gene encodes a ribosomal protein that is a component of the 40S subunit. The protein belongs to the S19E family of ribosomal proteins. It is located in the cytoplasm. Mutations in this gene cause Diamond-Blackfan anemia (DBA), a constitutional erythroblastopenia characterized by absent or decreased erythroid precursors, in a subset of patients. This suggests a possible extra-ribosomal function for this gene in erythropoietic differentiation and proliferation, in addition to its ribosomal function. Higher expression levels of this gene in some primary colon carcinomas compared to matched normal colon tissues has been observed. As is typical for genes encoding ribosomal proteins, there are multiple processed pseudogenes of this gene dispersed through the genome.
Molecular Weight:	16060
Gene ID:	6223
NCBI Accession:	NP_001013
UniProt:	P39019
Pathways:	Positive Regulation of Immune Effector Process , Ribonucleoprotein Complex Subunit Organization , Ribosome Assembly

Application Details

Application Notes:	WB: 1:1000. FC: 1:10~50
Restrictions:	For Research Use only

Handling

Format:	Liquid
Buffer:	Purified polyclonal antibody supplied in PBS with 0.09 % (W/V) sodium azide.
Preservative:	Sodium azide
Precaution of Use:	This product contains Sodium azide: a POISONOUS AND HAZARDOUS SUBSTANCE which should be handled by trained staff only.
Storage:	4 °C,-20 °C
Storage Comment:	Maintain refrigerated at 2-8 °C for up to 6 months. For long term storage store at -20 °C in small aliquots to prevent freeze-thaw cycles.



Flow Cytometry

Image 1. RPS19 Antibody (Center) (ABIN655978 and ABIN2845362) flow cytometric analysis of K562 cells (right histogram) compared to a negative control cell (left histogram). FITC-conjugated goat-anti-rabbit secondary antibodies were used for the analysis.

Western Blotting

Image 2. RPS19 Antibody (Center) (ABIN655978 and ABIN2845362) western blot analysis in K562 cell line lysates (35 µg/lane). This demonstrates the RPS19 antibody detected the RPS19 protein (arrow).