

Datasheet for ABIN655980
anti-XCR1 antibody (C-Term)[Go to Product page](#)

1 Image

Overview

Quantity:	400 µL
Target:	XCR1
Binding Specificity:	AA 305-333, C-Term
Reactivity:	Human
Host:	Rabbit
Clonality:	Polyclonal
Conjugate:	This XCR1 antibody is un-conjugated
Application:	Western Blotting (WB)

Product Details

Immunogen:	This XCR1 antibody is generated from rabbits immunized with a KLH conjugated synthetic peptide between 305-333 amino acids from the C-terminal region of human XCR1.
Clone:	RB31951
Isotype:	Ig Fraction
Purification:	This antibody is purified through a protein A column, followed by peptide affinity purification.

Target Details

Target:	XCR1
Alternative Name:	XCR1 (XCR1 Products)
Background:	The protein encoded by this gene is a chemokine receptor belonging to the G protein-coupled

Target Details

receptor superfamily. The family members are characterized by the presence of 7 transmembrane domains and numerous conserved amino acids. This receptor is most closely related to RBS11 and the MIP1-alpha/RANTES receptor. It transduces a signal by increasing the intracellular calcium ions level. The viral macrophage inflammatory protein-II is an antagonist of this receptor and blocks signaling. Two alternatively spliced transcript variants encoding the same protein have been found for this gene.

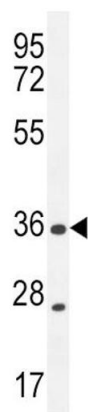
Molecular Weight:	38508
Gene ID:	2829
NCBI Accession:	NP_001019815 , NP_005274
UniProt:	P46094

Application Details

Application Notes:	WB: 1:1000
Restrictions:	For Research Use only

Handling

Format:	Liquid
Buffer:	Purified polyclonal antibody supplied in PBS with 0.09 % (W/V) sodium azide.
Preservative:	Sodium azide
Precaution of Use:	This product contains Sodium azide: a POISONOUS AND HAZARDOUS SUBSTANCE which should be handled by trained staff only.
Storage:	4 °C, -20 °C
Storage Comment:	Maintain refrigerated at 2-8 °C for up to 6 months. For long term storage store at -20 °C in small aliquots to prevent freeze-thaw cycles.
Expiry Date:	6 months



Western Blotting

Image 1. XCR1 Antibody (C-term) (ABIN655980 and ABIN2845364) western blot analysis in MDA-M cell line lysates (35 µg/lane). This demonstrates the XCR1 antibody detected the XCR1 protein (arrow).