



[Go to Product page](#)

Datasheet for ABIN6559812
anti-CD109 antibody (PE)

3 Images

Overview

Quantity:	100 tests
Target:	CD109
Reactivity:	Human
Host:	Mouse
Clonality:	Monoclonal
Conjugate:	This CD109 antibody is conjugated to PE
Application:	Flow Cytometry (FACS)

Product Details

Immunogen:	WERI-RB-1 retinoblastoma cell line
Clone:	W7C5
Isotype:	IgG1
Specificity:	The mouse monoclonal antibody W7C5 recognizes CD109, an approximately 165 kDa GPI-anchored extracellular protein expressed mainly on various hematopoietic cells, activated T lymphoblasts, activated platelets, and endothelial cells.
Cross-Reactivity (Details):	Human
Purification:	Purified antibody is conjugated with R-phycoerythrin (PE) under optimum conditions. Unconjugated antibody and free fluorochrome are removed by size-exclusion chromatography.

Target Details

Target:	CD109
---------	-------

Target Details

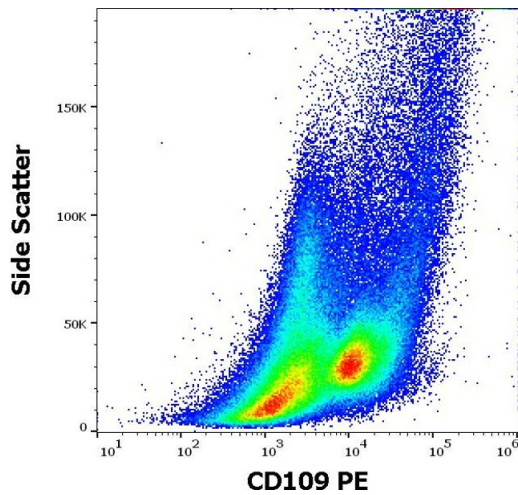
Alternative Name:	CD109 (CD109 Products)
Background:	CD109 Molecule,CD109, also known as the Gov platelet alloantigen, is a GPI-anchored glycoprotein which localizes to the surface of platelets, activated T-cells, and endothelial cells, as well as of various hematopoietic cells and T cell lines. The protein binds to and negatively regulates signaling by transforming growth factor beta (TGF-beta). Multiple transcript variants encoding different isoforms have been found for this gene. The Gov antigen system is involved in platelet transfusion reaction, posttransfusion purpura and in neonatal alloimmune thrombocytopenia.,CPAMD7, p180, r150, FLJ38569, GPA
Gene ID:	135228
UniProt:	Q6YHK3
Pathways:	Activated T Cell Proliferation

Application Details

Application Notes:	Flow cytometry: The reagent is designed for analysis of human blood cells using 10 µL reagent / 100 µL of whole blood or 10 ⁶ cells in a suspension. The content of a vial (1 ml) is sufficient for 100 tests.
Comment:	The purified antibody is conjugated with R-Phycoerythrin (PE) under optimum conditions. The conjugate is purified by size-exclusion chromatography and adjusted for direct use. No reconstitution is necessary.
Restrictions:	For Research Use only

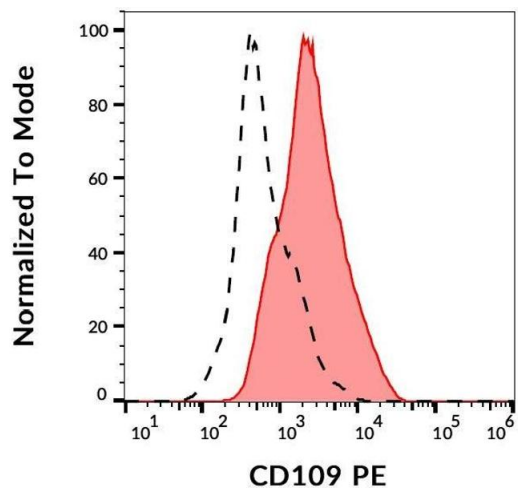
Handling

Buffer:	Stabilizing phosphate buffered saline (PBS), pH 7.4, 15 mM sodium azide
Preservative:	Sodium azide
Precaution of Use:	This product contains Sodium azide: a POISONOUS AND HAZARDOUS SUBSTANCE which should be handled by trained staff only.
Handling Advice:	The purified antibody is conjugated with R-Phycoerythrin (PE) under optimum conditions. The conjugate is purified by size-exclusion chromatography and adjusted for direct use. No reconstitution is necessary.
Storage:	4 °C
Storage Comment:	Store at 2-8°C. Protect from prolonged exposure to light. Do not freeze.



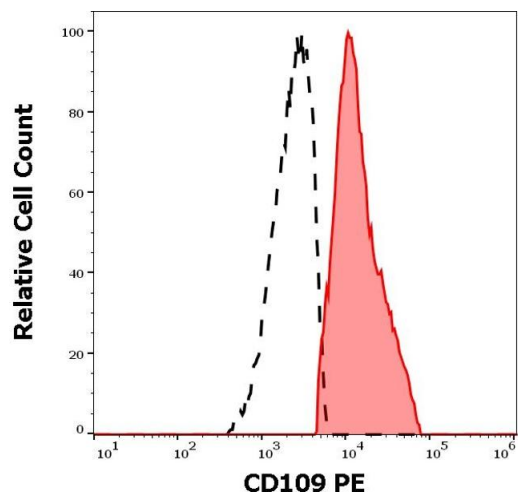
Flow Cytometry

Image 1. Flow cytometry surface staining pattern of human PHA stimulated peripheral blood mononuclear cells stained using anti-human CD109 (W7C5) PE antibody (10 μ L reagent per million cells in 100 μ L of cell suspension).



Flow Cytometry

Image 2. Surface staining of human peripheral blood cells using anti-CD109 (W7C5) PE.



Flow Cytometry

Image 3. Separation of human CD109 positive cells (red-filled) from CD109 negative cells (black-dashed) in flow cytometry analysis (surface staining) of human PHA stimulated peripheral blood mononuclear cells stained using anti-human CD109 (W7C5) PE antibody (10 μ L reagent per million cells in 100 μ L of cell suspension).