

Datasheet for ABIN6559817

anti-SIGLEC5 antibody (Extracellular Domain)[Go to Product page](#)**1** Image

Overview

Quantity:	0.1 mg
Target:	SIGLEC5
Binding Specificity:	Extracellular Domain
Reactivity:	Human, Non-Human Primate
Host:	Mouse
Clonality:	Monoclonal
Conjugate:	This SIGLEC5 antibody is un-conjugated
Application:	ELISA, Immunoprecipitation (IP), Immunocytochemistry (ICC), Flow Cytometry (FACS), Immunohistochemistry (Frozen Sections) (IHC (fro))

Product Details

Immunogen:	Fusion protein composed of human CD170 extracellular domain and Fc region of human IgG1
Clone:	1A5
Isotype:	IgG1
Specificity:	The mouse monoclonal antibody 1A5 recognizes an extracellular epitope of CD170 (Siglec-5, sialic acid binding Ig-like lectin 5), a transmembrane glycoprotein expressed strongly by neutrophils, macrophages activated during infections, monocytes, and dendritic cells. As in case with other anti-CD170 antibodies, this antibody crossreacts with Siglec-14, whose first two Ig domains are almost identical to those of CD170.
Cross-Reactivity (Details):	Human, Non-Human Primates
Purification:	Purified by protein-A affinity chromatography.

Product Details

Purity: > 95 % (by SDS-PAGE)

Target Details

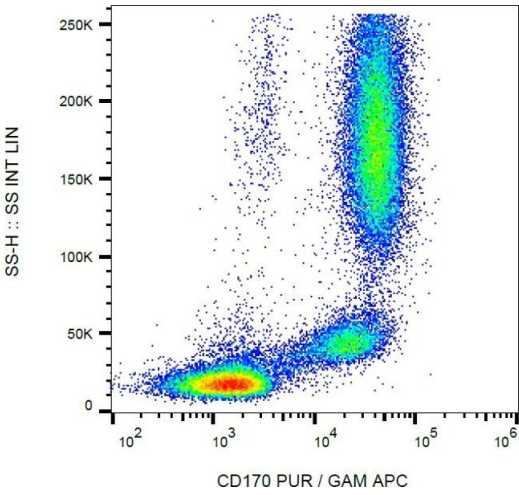
Target:	SIGLEC5
Alternative Name:	CD170 / Siglec-5 (SIGLEC5 Products)
Background:	Sialic acid binding Ig like lectin 5,CD170, also known as Siglec 5 (sialic acid binding Ig-like lectin 5) is a type 1 transmembrane glycoprotein containing two cytoplasmic immunoreceptor tyrosine inhibitory motifs (ITIMs). CD170 forms homodimers and functions as an inhibitory receptor able to downregulate cell activation. It binds to alpha2,3- and alpha2,6-linked sialic acid ligands, e.g. on glycophorin A (CD235a). Aberrant expression of CD170 by CD34+ progenitor cells can be observed in case of acute myeloid leukemias.,OBBP2, OB-BP2, SIGLEC-5, SIGLEC5
Gene ID:	8778
UniProt:	O15389

Application Details

Application Notes:	Flow cytometry: Recommended dilution: 1-4 µg/mL. Immunohistochemistry: Recommended dilution: 5-10 µg/mL.
Restrictions:	For Research Use only

Handling

Concentration:	1 mg/mL
Buffer:	Phosphate buffered saline (PBS), pH 7.4, 15 mM sodium azide
Preservative:	Sodium azide
Precaution of Use:	This product contains Sodium azide: a POISONOUS AND HAZARDOUS SUBSTANCE which should be handled by trained staff only.
Storage:	4 °C
Storage Comment:	Store at 2-8°C. Do not freeze.



Flow Cytometry

Image 1. Flow cytometry (surface staining) of human peripheral blood cells using anti-CD170 (1A5) purified, GAM-APC.