

Datasheet for ABIN655982

**anti-TUBA1C antibody (C-Term)**

4 Images

1 Publication

[Go to Product page](#)

## Overview

Quantity:	400 µL
Target:	TUBA1C
Binding Specificity:	AA 414-441, C-Term
Reactivity:	Human, Mouse, Rat
Host:	Rabbit
Clonality:	Polyclonal
Conjugate:	This TUBA1C antibody is un-conjugated
Application:	Western Blotting (WB), Immunohistochemistry (Paraffin-embedded Sections) (IHC (p))

## Product Details

Immunogen:	This TUBA1C antibody is generated from rabbits immunized with a KLH conjugated synthetic peptide between 414-441 amino acids from the C-terminal region of human TUBA1C.
Clone:	RB31971
Isotype:	Ig Fraction
Predicted Reactivity:	X
Purification:	This antibody is purified through a protein A column, followed by peptide affinity purification.

## Target Details

Target:	TUBA1C
Alternative Name:	TUBA1C ( <a href="#">TUBA1C Products</a> )

## Target Details

Background:	Tubulin is the major constituent of microtubules. It binds two moles of GTP, one at an exchangeable site on the beta chain and one at a non-exchangeable site on the alpha-chain.
Molecular Weight:	49895
Gene ID:	84790
NCBI Accession:	<a href="#">NP_116093</a>
UniProt:	<a href="#">Q9BQE3</a>
Pathways:	<a href="#">Microtubule Dynamics, M Phase</a>

## Application Details

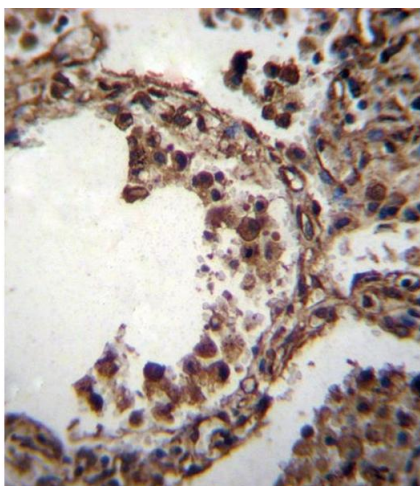
Application Notes:	WB: 1:2000. WB: 1:1000. IHC-P: 1:25. IHC-P: 1:10~50
Restrictions:	For Research Use only

## Handling

Format:	Liquid
Buffer:	Purified polyclonal antibody supplied in PBS with 0.09 % (W/V) sodium azide.
Preservative:	Sodium azide
Precaution of Use:	This product contains Sodium azide: a POISONOUS AND HAZARDOUS SUBSTANCE which should be handled by trained staff only.
Storage:	4 °C, -20 °C
Storage Comment:	Maintain refrigerated at 2-8 °C for up to 6 months. For long term storage store at -20 °C in small aliquots to prevent freeze-thaw cycles.
Expiry Date:	6 months

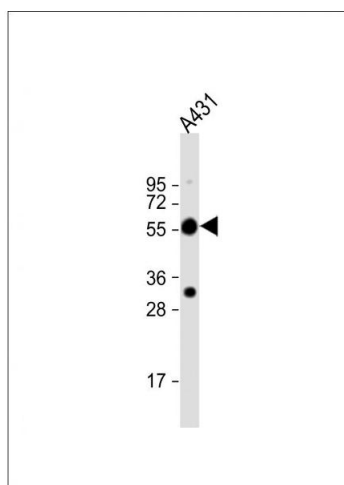
## Publications

Product cited in:	Liu, Peng, Zhan, Yu, Wu, Gao, Li, Guo: "Human chorionic gonadotropin $\beta$ regulates epithelial-mesenchymal transition and metastasis in human ovarian cancer." in: <b>Oncology reports</b> , Vol. 38, Issue 3, pp. 1464-1472, (2018) ( <a href="#">PubMed</a> ).
-------------------	---



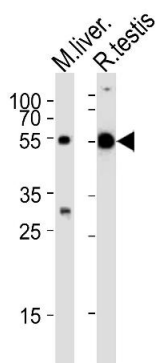
### Immunohistochemistry (Paraffin-embedded Sections)

**Image 1.** TUBA1C Antibody (C-term) (ABIN655982 and ABIN2845366) immunohistochemistry analysis in formalin fixed and paraffin embedded human lung tissue followed by peroxidase conjugation of the secondary antibody and DAB staining. This data demonstrates the use of TUBA1C Antibody (C-term) for immunohistochemistry. Clinical relevance has not been evaluated.



### Western Blotting

**Image 2.** Anti-TUBA1C Antibody (C-term) at 1:2000 dilution + A431 whole cell lysate Lysates/proteins at 20 µg per lane. Secondary Goat Anti-Rabbit IgG, (H+L), Peroxidase conjugated at 1/10000 dilution. Predicted band size : 50 kDa Blocking/Dilution buffer: 5 % NFDM/TBST.



### Western Blotting

**Image 3.** Western blot analysis of lysates from mouse liver and rat testis tissue lysate (from left to right), using TUBA1C Antibody (C-term) (ABIN655982 and ABIN2845366). (ABIN655982 and ABIN2845366) was diluted at 1:1000 at each lane. A goat anti-rabbit IgG H&L(HRP) at 1:5000 dilution was used as the secondary antibody. Lysates at 35 µg per lane.

Please check the [product details page](#) for more images. Overall 4 images are available for ABIN655982.