

Datasheet for ABIN6559821

anti-SIGLEC5 antibody (Extracellular Domain) (PE)[Go to Product page](#)**1** Image

Overview

Quantity:	100 tests
Target:	SIGLEC5
Binding Specificity:	Extracellular Domain
Reactivity:	Human, Non-Human Primate
Host:	Mouse
Clonality:	Monoclonal
Conjugate:	This SIGLEC5 antibody is conjugated to PE
Application:	Flow Cytometry (FACS)

Product Details

Immunogen:	Fusion protein composed of human CD170 extracellular domain and Fc region of human IgG1
Clone:	1A5
Isotype:	IgG1
Specificity:	The mouse monoclonal antibody 1A5 recognizes an extracellular epitope of CD170 (Siglec-5, sialic acid binding Ig-like lectin 5), a transmembrane glycoprotein expressed strongly by neutrophils, macrophages activated during infections, monocytes, and dendritic cells. As in case with other anti-CD170 antibodies, this antibody crossreacts with Siglec-14, whose first two Ig domains are almost identical to those of CD170.
Cross-Reactivity (Details):	Human, Non-Human Primates
Purification:	Purified antibody is conjugated with R-phycoerythrin (PE) under optimum conditions. Unconjugated antibody and free fluorochrome are removed by size-exclusion chromatography.

Target Details

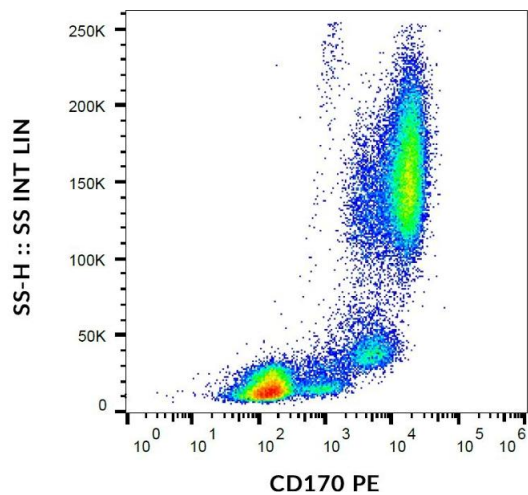
Target:	SIGLEC5
Alternative Name:	CD170 / Siglec-5 (SIGLEC5 Products)
Background:	Sialic acid binding Ig like lectin 5,CD170, also known as Siglec 5 (sialic acid binding Ig-like lectin 5) is a type 1 transmembrane glycoprotein containing two cytoplasmic immunoreceptor tyrosine inhibitory motifs (ITIMs). CD170 forms homodimers and functions as an inhibitory receptor able to downregulate cell activation. It binds to alpha2,3- and alpha2,6-linked sialic acid ligands, e.g. on glycophorin A (CD235a). Aberrant expression of CD170 by CD34+ progenitor cells can be observed in case of acute myeloid leukemias.,OBBP2, OB-BP2, SIGLEC-5, SIGLEC5
Gene ID:	8778
UniProt:	O15389

Application Details

Application Notes:	Flow cytometry: The reagent is designed for analysis of human blood cells using 10 µL reagent / 100 µL of whole blood or 10 ⁶ cells in a suspension. The content of a vial (1 ml) is sufficient for 100 tests.
Comment:	The purified antibody is conjugated with R-Phycoerythrin (PE) under optimum conditions. The conjugate is purified by size-exclusion chromatography and adjusted for direct use. No reconstitution is necessary.
Restrictions:	For Research Use only

Handling

Buffer:	Stabilizing phosphate buffered saline (PBS), pH 7.4, 15 mM sodium azide
Preservative:	Sodium azide
Precaution of Use:	This product contains Sodium azide: a POISONOUS AND HAZARDOUS SUBSTANCE which should be handled by trained staff only.
Handling Advice:	The purified antibody is conjugated with R-Phycoerythrin (PE) under optimum conditions. The conjugate is purified by size-exclusion chromatography and adjusted for direct use. No reconstitution is necessary.
Storage:	4 °C
Storage Comment:	Store at 2-8°C. Protect from prolonged exposure to light. Do not freeze.



Flow Cytometry

Image 1. Flow cytometry analysis (surface staining) of human peripheral blood cells using anti-CD170 (1A5) PE.