



Datasheet for ABIN6559825  
**anti-CD151 antibody**



[Go to Product page](#)

1 Image

Overview

Quantity:	0.1 mg
Target:	CD151
Reactivity:	Human
Host:	Mouse
Clonality:	Monoclonal
Conjugate:	This CD151 antibody is un-conjugated
Application:	Western Blotting (WB), Flow Cytometry (FACS), Immunohistochemistry (Frozen Sections) (IHC (fro)), Immunocytochemistry (ICC)

Product Details

Immunogen:	Human epidermoid carcinoma cell line Hep-3
Clone:	50-6
Isotype:	IgG1 kappa
Specificity:	The mouse monoclonal antibody CD151 recognizes an extracellular epitope of CD151 (also known as PETA-3), a 29 kDa transmembrane protein of tetraspanin family, expressed in many cell types.
Cross-Reactivity (Details):	Human
Purification:	Purified by protein-A affinity chromatography.
Purity:	> 95 % (by SDS-PAGE)

## Target Details

---

Target:	CD151
Alternative Name:	CD151 ( <a href="#">CD151 Products</a> )
Background:	CD151 Molecule (Raph blood group),CD151, also known as PETA-3 (platelet-endothelial tetraspan antigen), is a four-pass transmembrane glycoprotein with short cytoplasmic N- and C-termini. CD151 is expressed mainly in platelets and megakaryocytes, immature hematopoietic cells, activated T cells, in endothelium, muscle cells, and epithelial cells. It associates with CD9, CD181, and integrin complexes alpha 3 / beta 1 (CD49c / CD29), alpha 5 / beta 1 (CD49e / CD29), and alpha 6 / beta 4 (CD49f / CD104). CD151 appears to be involved in cell adhesion and migration, including metastasis.,RAPH blood group, MER2, SFA1, PETA-3, GP27
Gene ID:	977
UniProt:	<a href="#">P48509</a>

## Application Details

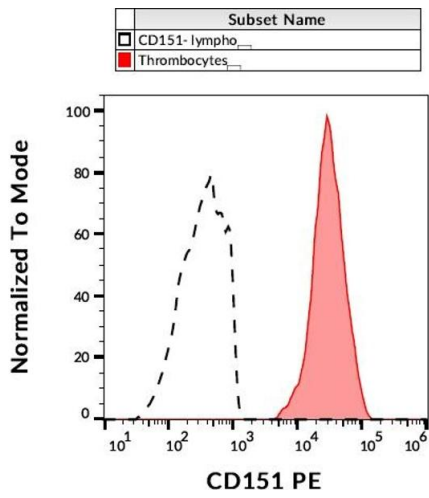
---

Application Notes:	Flow cytometry: Recommended dilution: 2-4 µg/mL.
Restrictions:	For Research Use only

## Handling

---

Concentration:	1 mg/mL
Buffer:	Phosphate buffered saline (PBS), pH 7.4, 15 mM sodium azide
Preservative:	Sodium azide
Precaution of Use:	This product contains Sodium azide: a POISONOUS AND HAZARDOUS SUBSTANCE which should be handled by trained staff only.
Storage:	4 °C
Storage Comment:	Store at 2-8°C. Do not freeze.



### Flow Cytometry

**Image 1.** Flow cytometry analysis (surface staining) of human peripheral blood with anti-human CD151 (50-6) PE.