

Datasheet for ABIN655986
anti-GLMN antibody (C-Term)

3 Images

[Go to Product page](#)

Overview

Quantity:	400 µL
Target:	GLMN
Binding Specificity:	AA 498-525, C-Term
Reactivity:	Human
Host:	Rabbit
Clonality:	Polyclonal
Conjugate:	This GLMN antibody is un-conjugated
Application:	Western Blotting (WB), Flow Cytometry (FACS), Immunohistochemistry (Paraffin-embedded Sections) (IHC (p))

Product Details

Immunogen:	This GLMN antibody is generated from rabbits immunized with a KLH conjugated synthetic peptide between 498-525 amino acids from the C-terminal region of human GLMN.
Clone:	RB31988
Isotype:	Ig Fraction
Predicted Reactivity:	M
Purification:	This antibody is purified through a protein A column, followed by peptide affinity purification.

Target Details

Target:	GLMN
---------	------

Target Details

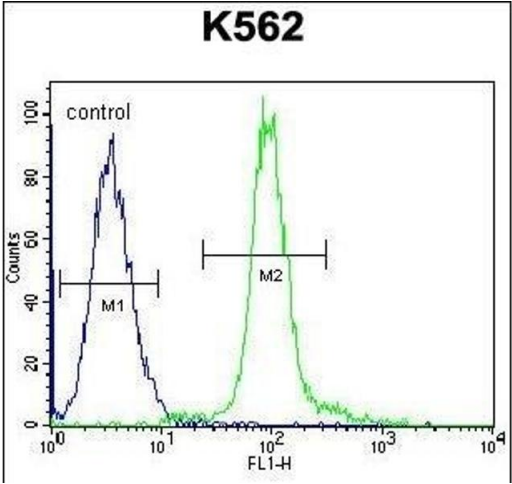
Alternative Name:	GLMN (GLMN Products)
Background:	<p>This gene encodes a phosphorylated protein that is a member of a Skp1-Cullin-F-box-like complex. The protein is essential for normal development of the vasculature and mutations in this gene have been associated with glomuvenous malformations, also called glomangiomas. Alternatively spliced variants that encode different protein isoforms have been described but the full-length nature of only one has been determined. [provided by RefSeq].</p>
Molecular Weight:	68208
Gene ID:	11146
NCBI Accession:	NP_444504
UniProt:	Q92990
Pathways:	Tube Formation

Application Details

Application Notes:	WB: 1:1000. IHC-P: 1:10~50. FC: 1:10~50
Restrictions:	For Research Use only

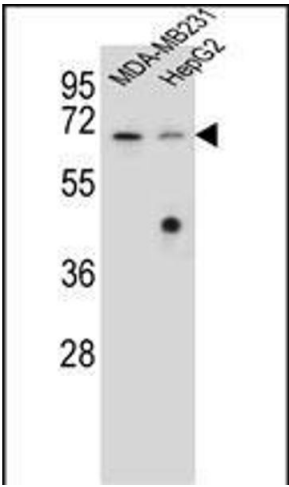
Handling

Format:	Liquid
Buffer:	Purified polyclonal antibody supplied in PBS with 0.09 % (W/V) sodium azide.
Preservative:	Sodium azide
Precaution of Use:	This product contains Sodium azide: a POISONOUS AND HAZARDOUS SUBSTANCE which should be handled by trained staff only.
Storage:	4 °C,-20 °C
Storage Comment:	Maintain refrigerated at 2-8 °C for up to 6 months. For long term storage store at -20 °C in small aliquots to prevent freeze-thaw cycles.
Expiry Date:	6 months



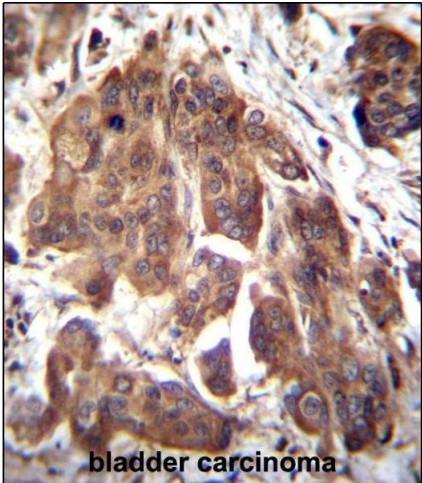
Flow Cytometry

Image 1. GLMN Antibody (C-term) (ABIN655986 and ABIN2845370) flow cytometric analysis of K562 cells (right histogram) compared to a negative control cell (left histogram). FITC-conjugated goat-anti-rabbit secondary antibodies were used for the analysis.



Western Blotting

Image 2. GLMN Antibody (C-term) (ABIN655986 and ABIN2845370) western blot analysis in MDA-M, HepG2 cell line lysates (35 µg/lane). This demonstrates the GLMN antibody detected the GLMN protein (arrow).



Immunohistochemistry (Paraffin-embedded Sections)

Image 3. GLMN Antibody (C-term) (ABIN655986 and ABIN2845370) immunohistochemistry analysis in formalin fixed and paraffin embedded human bladder carcinoma followed by peroxidase conjugation of the secondary antibody and DAB staining. This data demonstrates the use of GLMN Antibody (C-term) for immunohistochemistry. Clinical relevance has not been evaluated.