

Datasheet for ABIN655988  
**anti-SH2D4A antibody (N-Term)**[Go to Product page](#)

## 2 Images

## Overview

Quantity:	400 µL
Target:	SH2D4A
Binding Specificity:	AA 38-67, N-Term
Reactivity:	Human
Host:	Rabbit
Clonality:	Polyclonal
Conjugate:	This SH2D4A antibody is un-conjugated
Application:	Western Blotting (WB), Immunohistochemistry (Paraffin-embedded Sections) (IHC (p))

## Product Details

Immunogen:	This SH2D4A antibody is generated from rabbits immunized with a KLH conjugated synthetic peptide between 38-67 amino acids from the N-terminal region of human SH2D4A.
Clone:	RB31992
Isotype:	Ig Fraction
Purification:	This antibody is purified through a protein A column, followed by peptide affinity purification.

## Target Details

Target:	SH2D4A
Alternative Name:	SH2D4A ( <a href="#">SH2D4A Products</a> )
Background:	SH2D4A inhibits estrogen-induced cell proliferation by competing with PLCG for binding to

## Target Details

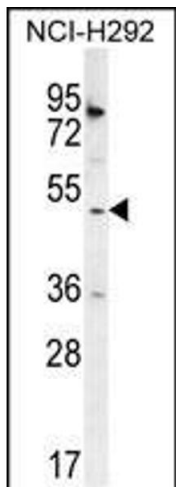
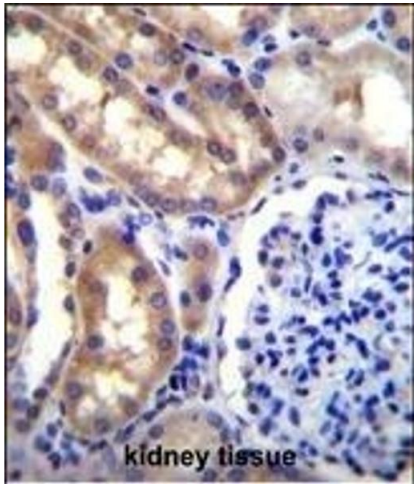
	ESR1, blocking the effect of estrogen on PLCG and repressing estrogen-induced proliferation. May play a role in T-cell development and function.
Molecular Weight:	52727
Gene ID:	63898
NCBI Accession:	<a href="#">NP_001167630</a> , <a href="#">NP_001167631</a> , <a href="#">NP_071354</a>
UniProt:	<a href="#">Q9H788</a>

## Application Details

Application Notes:	WB: 1:1000. IHC-P: 1:10~50
Restrictions:	For Research Use only

## Handling

Format:	Liquid
Buffer:	Purified polyclonal antibody supplied in PBS with 0.09 % (W/V) sodium azide.
Preservative:	Sodium azide
Precaution of Use:	This product contains Sodium azide: a POISONOUS AND HAZARDOUS SUBSTANCE which should be handled by trained staff only.
Storage:	4 °C,-20 °C
Storage Comment:	Maintain refrigerated at 2-8 °C for up to 6 months. For long term storage store at -20 °C in small aliquots to prevent freeze-thaw cycles.
Expiry Date:	6 months



**Immunohistochemistry (Paraffin-embedded Sections)**

**Image 1.** SH2D4A Antibody (N-term) (ABIN655988 and ABIN2845372) immunohistochemistry analysis in formalin fixed and paraffin embedded human kidney tissue followed by peroxidase conjugation of the secondary antibody and DAB staining. This data demonstrates the use of SH2D4A Antibody (N-term) for immunohistochemistry. Clinical relevance has not been evaluated.

**Western Blotting**

**Image 2.** SH2D4A Antibody (N-term) (ABIN655988 and ABIN2845372) western blot analysis in NCI- cell line lysates (35 µg/lane). This demonstrates the SH2D4A antibody detected the SH2D4A protein (arrow).