



Datasheet for ABIN656010
anti-SUV420H1 antibody (C-Term)



[Go to Product page](#)

2 Images

Overview

Quantity:	400 µL
Target:	SUV420H1
Binding Specificity:	AA 4-20, AA 759-789, C-Term
Reactivity:	Human
Host:	Rabbit
Clonality:	Polyclonal
Conjugate:	This SUV420H1 antibody is un-conjugated
Application:	Western Blotting (WB), Flow Cytometry (FACS)

Product Details

Immunogen:	This SUV4-20H1 antibody is generated from rabbits immunized with a KLH conjugated synthetic peptide between 759-789 AA from the C-terminal region of human SUV4-20H1.
Clone:	RB14358
Isotype:	Ig Fraction
Specificity:	This SUV4-20H1 antibody is generated from rabbits immunized with a KLH conjugated synthetic peptide between 766-797 amino acids from the C-terminal region of human SUV4-20H1.
Purification:	This antibody is purified through a protein A column, followed by peptide affinity purification.

Target Details

Target:	SUV420H1
---------	----------

Target Details

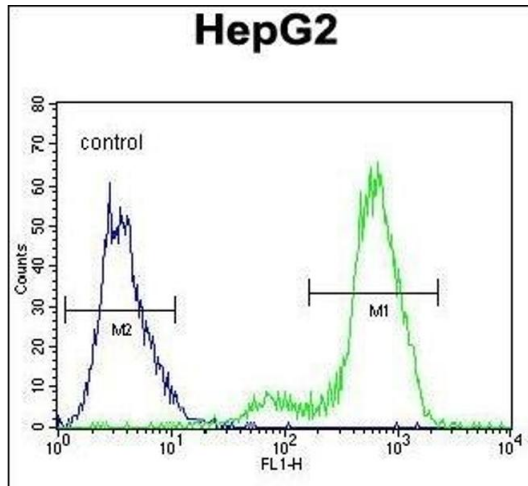
Alternative Name:	SUV4-20H1 (SUV420H1 Products)
Background:	This gene encodes a protein that contains a SET domain. SET domains appear to be protein-protein interaction domains that mediate interactions with a family of proteins that display similarity with dual-specificity phosphatases (dsPTPases). The function of this gene has not been determined. Two alternatively spliced transcript variants have been found for this gene. Synonyms: SUV420H1,Histone-lysine N-methyltransferase SUV420H1,KMT5B
Molecular Weight:	99188 DA
Gene ID:	51111
NCBI Accession:	NP_057112 , NP_060105
UniProt:	Q4FZB7

Application Details

Application Notes:	WB = 1:1000, FACS = 1:10-50
Restrictions:	For Research Use only

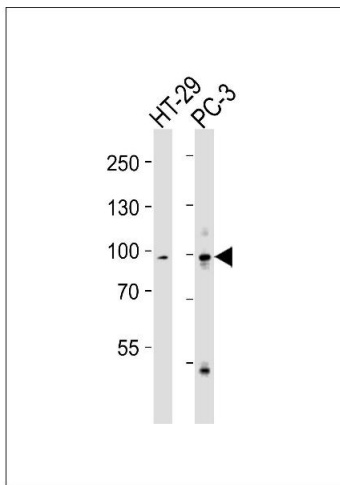
Handling

Format:	Liquid
Concentration:	0.42 mg/mL
Buffer:	PBS with 0.09 % (W/V) sodium azide
Preservative:	Sodium azide
Precaution of Use:	This product contains sodium azide: a POISONOUS AND HAZARDOUS SUBSTANCE which should be handled by trained staff only.
Storage:	4 °C/-20 °C
Storage Comment:	Maintain refrigerated at 2-8 °C for up to 6 months. For long term storage store at -20 °C in small aliquots to prevent freeze-thaw cycles.
Expiry Date:	6 months



Flow Cytometry

Image 1. SUV4-20H1 Antibody (C-term) flow cytometric analysis of HepG2 cells (right histogram) compared to a negative control cell (left histogram). FITC-conjugated goat anti-rabbit secondary antibodies were used for the analysis.



Western Blotting

Image 2. Western blot analysis of lysates from HT-29, PC-3 cell line (from left to right), using SUV4-20H1 Antibody (C-term) B. B was diluted at 1:1000 at each lane. A goat anti-rabbit IgG H&L(HRP) at 1:10000 dilution was used as the secondary antibody. Lysates at 35 µg per lane.