



[Go to Product page](#)

Datasheet for ABIN656011

anti-SUV420H2/KMT5C antibody (AA 60-90)

1 Image

Overview

Quantity:	400 µL
Target:	SUV420H2/KMT5C (SUV420H2)
Binding Specificity:	AA 60-90
Reactivity:	Mouse
Host:	Rabbit
Clonality:	Polyclonal
Conjugate:	This SUV420H2/KMT5C antibody is un-conjugated
Application:	Western Blotting (WB)

Product Details

Immunogen:	This SUV4-20H2 antibody is generated from rabbits immunized with a KLH conjugated synthetic peptide between 60-90 amino acids of human SUV4-20H2.
Clone:	RB14359
Isotype:	Ig Fraction
Purification:	This antibody is prepared by Saturated Ammonium Sulfate (SAS) precipitation followed by dialysis against PBS.

Target Details

Target:	SUV420H2/KMT5C (SUV420H2)
Alternative Name:	SUV4-20H2 (SUV420H2 Products)

Target Details

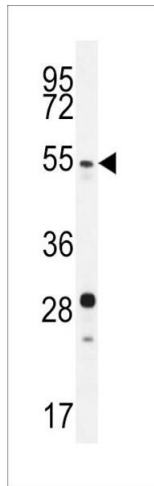
Background:	SUV420H2 and the related enzyme SUV420H1 (MIM 610881) function as histone methyltransferases that specifically trimethylate nucleosomal histone H4 (see MIM 602822) on lysine-20 (K20) (Schotta et al., 2004 [PubMed 15145825]).
Molecular Weight:	52113
Gene ID:	84787
NCBI Accession:	NP_116090
UniProt:	Q86Y97

Application Details

Application Notes:	WB: 1:1000
Restrictions:	For Research Use only

Handling

Format:	Liquid
Buffer:	Purified polyclonal antibody supplied in PBS with 0.09 % (W/V) sodium azide.
Preservative:	Sodium azide
Precaution of Use:	This product contains Sodium azide: a POISONOUS AND HAZARDOUS SUBSTANCE which should be handled by trained staff only.
Storage:	4 °C, -20 °C
Storage Comment:	Maintain refrigerated at 2-8 °C for up to 6 months. For long term storage store at -20 °C in small aliquots to prevent freeze-thaw cycles.
Expiry Date:	6 months



Western Blotting

Image 1. SUV4-20H2 Antibody (N-term) (ABIN656011 and ABIN2845387) western blot analysis in mouse stomach tissue lysates (35 µg/lane). This demonstrates the SUV4-20H2 antibody detected the SUV4-20H2 protein (arrow).