

Datasheet for ABIN656013
anti-KAT2B antibody (C-Term)[Go to Product page](#)

1 Image

1 Publication

Overview

Quantity:	400 µL
Target:	KAT2B
Binding Specificity:	AA 802-832, C-Term
Reactivity:	Human
Host:	Rabbit
Clonality:	Polyclonal
Conjugate:	This KAT2B antibody is un-conjugated
Application:	Western Blotting (WB)

Product Details

Immunogen:	This PCAF antibody is generated from rabbits immunized with a KLH conjugated synthetic peptide between 802-832 amino acids from the C-terminal region of human PCAF.
Clone:	RB14386
Isotype:	Ig Fraction
Predicted Reactivity:	M
Purification:	This antibody is prepared by Saturated Ammonium Sulfate (SAS) precipitation followed by dialysis against PBS.

Target Details

Target:	KAT2B
---------	-------

Target Details

Alternative Name:	PCAF (KAT2B Products)
Background:	CBP and p300 are large nuclear proteins that bind to many sequence-specific factors involved in cell growth and/or differentiation, including c-jun and the adenoviral oncoprotein E1A. The protein encoded by this gene associates with p300/CBP. It has in vitro and in vivo binding activity with CBP and p300, and competes with E1A for binding sites in p300/CBP. It has histone acetyl transferase activity with core histones and nucleosome core particles, indicating that this protein plays a direct role in transcriptional regulation.
Molecular Weight:	93013
Gene ID:	8850
NCBI Accession:	NP_003875
UniProt:	Q92831
Pathways:	p53 Signaling , Regulation of Carbohydrate Metabolic Process

Application Details

Application Notes:	WB: 1:1000
Restrictions:	For Research Use only

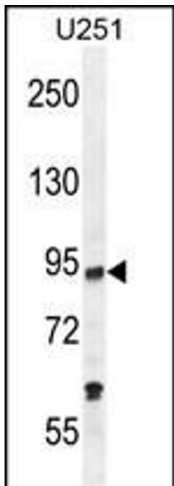
Handling

Format:	Liquid
Buffer:	Purified polyclonal antibody supplied in PBS with 0.09 % (W/V) sodium azide.
Preservative:	Sodium azide
Precaution of Use:	This product contains Sodium azide: a POISONOUS AND HAZARDOUS SUBSTANCE which should be handled by trained staff only.
Storage:	4 °C,-20 °C
Storage Comment:	Maintain refrigerated at 2-8 °C for up to 6 months. For long term storage store at -20 °C in small aliquots to prevent freeze-thaw cycles.
Expiry Date:	6 months

Publications

Product cited in:	Wang, Wu, Zhou, Guo, Zheng, Wang, Bi, Liu, Zhou, Guo, Sha: "Mapping of the N-linked
-------------------	---

glycoproteome of human spermatozoa." in: **Journal of proteome research**, Vol. 12, Issue 12, pp. 5750-9, (2013) ([PubMed](#)).



Western Blotting

Image 1. PCAF Antibody (C-term) (ABIN656013 and ABIN2845389) western blot analysis in cell line lysates (35 μ g/lane). This demonstrates the PCAF antibody detected the PCAF protein (arrow).