

Datasheet for ABIN656022  
**anti-VILL antibody (AA 385-412)**[Go to Product page](#)

## 4 Images

## Overview

Quantity:	400 µL
Target:	VILL
Binding Specificity:	AA 385-412
Reactivity:	Human
Host:	Rabbit
Clonality:	Polyclonal
Conjugate:	This VILL antibody is un-conjugated
Application:	Western Blotting (WB), Immunofluorescence (IF), Flow Cytometry (FACS), Immunohistochemistry (Paraffin-embedded Sections) (IHC (p))

## Product Details

Immunogen:	This VILL antibody is generated from rabbits immunized with a KLH conjugated synthetic peptide between 385-412 amino acids from the Central region of human VILL.
Clone:	RB18834
Isotype:	Ig Fraction
Purification:	This antibody is purified through a protein A column, followed by peptide affinity purification.

## Target Details

Target:	VILL
Alternative Name:	VILL ( <a href="#">VILL Products</a> )

## Target Details

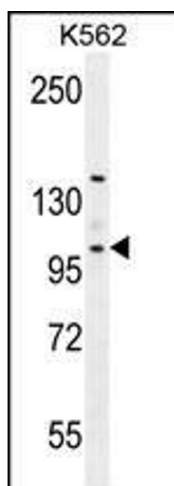
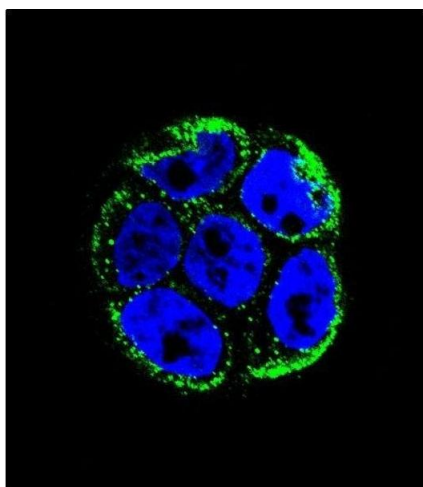
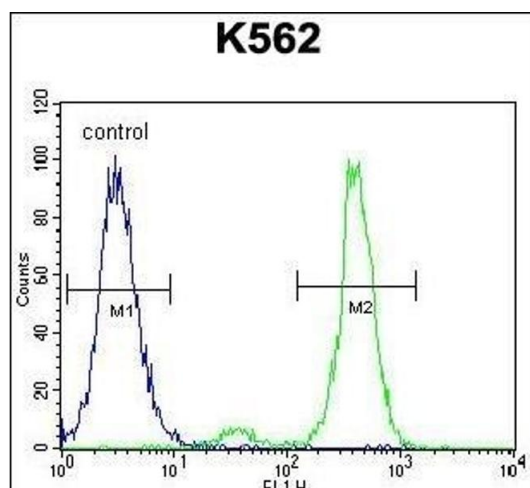
Background:	The protein encoded by this gene belongs to the villin/gelsolin family. It contains 6 gelsolin-like repeats and a headpiece domain. It may play a role in actin-bundling. [provided by RefSeq].
Molecular Weight:	95907
Gene ID:	50853
NCBI Accession:	<a href="#">NP_056957</a>
UniProt:	<a href="#">O15195</a>
Pathways:	<a href="#">Regulation of Actin Filament Polymerization</a>

## Application Details

Application Notes:	IF: 1:10~50. WB: 1:1000. IHC-P: 1:50~100. FC: 1:10~50
Restrictions:	For Research Use only

## Handling

Format:	Liquid
Buffer:	Purified polyclonal antibody supplied in PBS with 0.09 % (W/V) sodium azide.
Preservative:	Sodium azide
Precaution of Use:	This product contains Sodium azide: a POISONOUS AND HAZARDOUS SUBSTANCE which should be handled by trained staff only.
Storage:	4 °C,-20 °C
Storage Comment:	Maintain refrigerated at 2-8 °C for up to 6 months. For long term storage store at -20 °C in small aliquots to prevent freeze-thaw cycles.
Expiry Date:	6 months



### Flow Cytometry

**Image 1.** VILL Antibody (Center) (ABIN656022 and ABIN2845397) flow cytometric analysis of K562 cells (right histogram) compared to a negative control cell (left histogram). FITC-conjugated goat-anti-rabbit secondary antibodies were used for the analysis.

### Immunofluorescence

**Image 2.** Confocal immunofluorescent analysis of VILL Antibody (Center) (ABIN656022 and ABIN2845397) with WiDr cell followed by Alexa Fluor 488-conjugated goat anti-rabbit IgG (green). DAPI was used to stain the cell nuclear (blue).

### Western Blotting

**Image 3.** VILL Antibody (Center) (ABIN656022 and ABIN2845397) western blot analysis in K562 cell line lysates (35 µg/lane). This demonstrates the VILL antibody detected the VILL protein (arrow).

Please check the [product details page](#) for more images. Overall 4 images are available for ABIN656022.