

Datasheet for ABIN656023
anti-ZEB2 antibody (C-Term)[Go to Product page](#)

2 Images

Overview

Quantity:	400 µL
Target:	ZEB2
Binding Specificity:	AA 1078-1105, C-Term
Reactivity:	Human
Host:	Rabbit
Clonality:	Polyclonal
Conjugate:	This ZEB2 antibody is un-conjugated
Application:	Western Blotting (WB), Flow Cytometry (FACS)

Product Details

Immunogen:	This ZEB2 antibody is generated from rabbits immunized with a KLH conjugated synthetic peptide between 1078-1105 amino acids from the C-terminal region of human ZEB2.
Clone:	RB19137
Isotype:	Ig Fraction
Predicted Reactivity:	M
Purification:	This antibody is purified through a protein A column, followed by peptide affinity purification.

Target Details

Target:	ZEB2
Alternative Name:	ZEB2 (ZEB2 Products)

Target Details

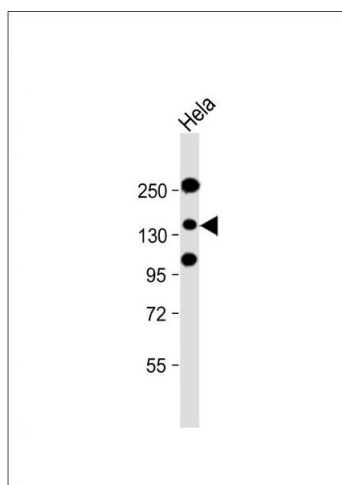
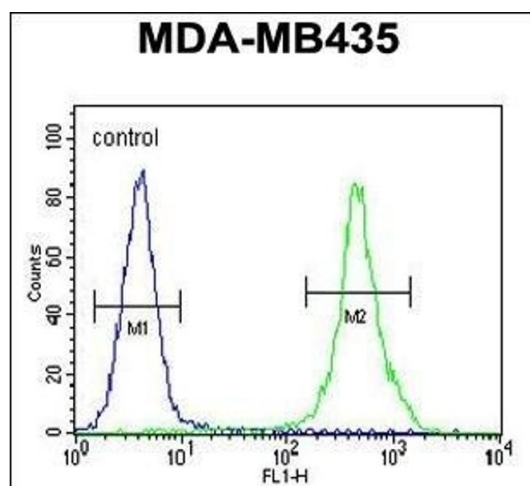
Background:	The protein encoded by this gene is a member of the Zfh1 family of 2-handed zinc finger/homeodomain proteins. It is located in the nucleus and functions as a DNA-binding transcriptional repressor that interacts with activated SMADs. Mutations in this gene are associated with Hirschsprung disease/Mowat-Wilson syndrome. Alternatively spliced transcript variants have been found for this gene.
Molecular Weight:	136447
Gene ID:	9839
NCBI Accession:	NP_001165124 , NP_055610
UniProt:	O60315
Pathways:	Tube Formation

Application Details

Application Notes:	WB: 1:2000. FC: 1:10~50
Restrictions:	For Research Use only

Handling

Format:	Liquid
Buffer:	Purified polyclonal antibody supplied in PBS with 0.09 % (W/V) sodium azide.
Preservative:	Sodium azide
Precaution of Use:	This product contains Sodium azide: a POISONOUS AND HAZARDOUS SUBSTANCE which should be handled by trained staff only.
Storage:	4 °C, -20 °C
Storage Comment:	Maintain refrigerated at 2-8 °C for up to 6 months. For long term storage store at -20 °C in small aliquots to prevent freeze-thaw cycles.
Expiry Date:	6 months



Flow Cytometry

Image 1. ZEB2 Antibody (C-term) (ABIN656023 and ABIN2845398) flow cytometric analysis of MDA-M cells (right histogram) compared to a negative control cell (left histogram). FITC-conjugated goat-anti-rabbit secondary antibodies were used for the analysis.

Western Blotting

Image 2. Anti-ZEB2 Antibody (C-term) at 1:2000 dilution + HeLa cell nucleus lysate Lysates/proteins at 20 µg per lane. Secondary Goat Anti-Rabbit IgG, (H+L), Peroxidase conjugated at 1/10000 dilution. Predicted band size : 136 kDa Blocking/Dilution buffer: 5 % NFDM/TBST.