

Datasheet for ABIN656026
anti-ENPEP antibody (C-Term)[Go to Product page](#)

3 Images

Overview

Quantity:	400 µL
Target:	ENPEP
Binding Specificity:	AA 899-930, C-Term
Reactivity:	Human
Host:	Rabbit
Clonality:	Polyclonal
Conjugate:	This ENPEP antibody is un-conjugated
Application:	Western Blotting (WB), Flow Cytometry (FACS), Immunohistochemistry (Paraffin-embedded Sections) (IHC (p))

Product Details

Immunogen:	This ENPEP antibody is generated from rabbits immunized with a KLH conjugated synthetic peptide between 899-930 amino acids from the C-terminal region of human ENPEP.
Clone:	RB19291
Isotype:	Ig Fraction
Purification:	This antibody is purified through a protein A column, followed by peptide affinity purification.

Target Details

Target:	ENPEP
Alternative Name:	ENPEP (ENPEP Products)

Target Details

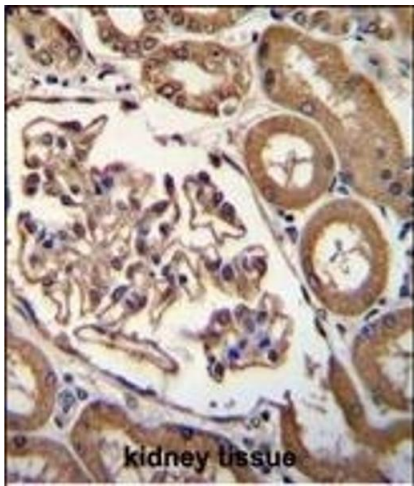
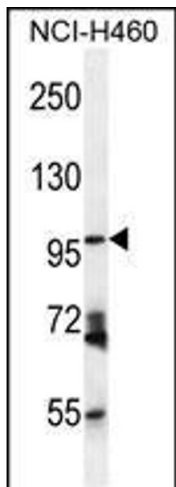
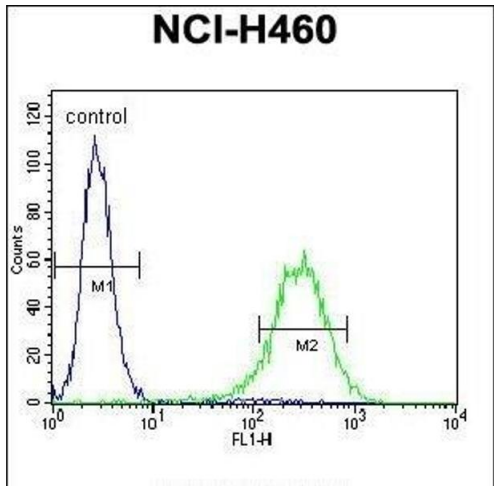
Background:	ENPEP appears to have a role in the catabolic pathway of the renin-angiotensin system. Probably plays a role in regulating growth and differentiation of early B-lineage cells.
Molecular Weight:	109244
Gene ID:	2028
NCBI Accession:	NP_001968
UniProt:	Q07075
Pathways:	Peptide Hormone Metabolism , Regulation of Systemic Arterial Blood Pressure by Hormones

Application Details

Application Notes:	WB: 1:1000. IHC-P: 1:50~100. FC: 1:10~50
Restrictions:	For Research Use only

Handling

Format:	Liquid
Buffer:	Purified polyclonal antibody supplied in PBS with 0.09 % (W/V) sodium azide.
Preservative:	Sodium azide
Precaution of Use:	This product contains Sodium azide: a POISONOUS AND HAZARDOUS SUBSTANCE which should be handled by trained staff only.
Storage:	4 °C,-20 °C
Storage Comment:	Maintain refrigerated at 2-8 °C for up to 6 months. For long term storage store at -20 °C in small aliquots to prevent freeze-thaw cycles.
Expiry Date:	6 months



Flow Cytometry

Image 1. ENPEP Antibody (C-term) (ABIN656026 and ABIN2845400) flow cytometric analysis of NCI- cells (right histogram) compared to a negative control cell (left histogram).FITC-conjugated goat-anti-rabbit secondary antibodies were used for the analysis.

Western Blotting

Image 2. ENPEP Antibody (C-term) (ABIN656026 and ABIN2845400) western blot analysis in NCI- cell line lysates (35 µg/lane).This demonstrates the ENPEP antibody detected the ENPEP protein (arrow).

Immunohistochemistry (Paraffin-embedded Sections)

Image 3. ENPEP Antibody (C-term) (ABIN656026 and ABIN2845400) immunohistochemistry analysis in formalin fixed and paraffin embedded human kidney tissue followed by peroxidase conjugation of the secondary antibody and DAB staining.This data demonstrates the use of ENPEP Antibody (C-term) for immunohistochemistry. Clinical relevance has not been evaluated.