

Datasheet for ABIN656028
anti-MED6 antibody (C-Term)[Go to Product page](#)

1 Image

Overview

Quantity:	400 µL
Target:	MED6
Binding Specificity:	AA 217-246, C-Term
Reactivity:	Human
Host:	Rabbit
Clonality:	Polyclonal
Conjugate:	This MED6 antibody is un-conjugated
Application:	Western Blotting (WB)

Product Details

Immunogen:	This MED6 antibody is generated from rabbits immunized with a KLH conjugated synthetic peptide between 217-246 amino acids from the C-terminal region of human MED6.
Clone:	RB20184
Isotype:	Ig Fraction
Purification:	This antibody is purified through a protein A column, followed by peptide affinity purification.

Target Details

Target:	MED6
Alternative Name:	MED6 (MED6 Products)
Background:	Component of the Mediator complex, a coactivator involved in the regulated transcription of

Target Details

nearly all RNA polymerase II-dependent genes. Mediator functions as a bridge to convey information from gene-specific regulatory proteins to the basal RNA polymerase II transcription machinery. Mediator is recruited to promoters by direct interactions with regulatory proteins and serves as a scaffold for the assembly of a functional preinitiation complex with RNA polymerase II and the general transcription factors.

Molecular Weight: 28425

Gene ID: 10001

NCBI Accession: [NP_005457](#)

UniProt: [O75586](#)

Pathways: [Stem Cell Maintenance](#), [Regulation of Lipid Metabolism by PPARalpha](#)

Application Details

Application Notes: WB: 1:1000

Restrictions: For Research Use only

Handling

Format: Liquid

Buffer: Purified polyclonal antibody supplied in PBS with 0.09 % (W/V) sodium azide.

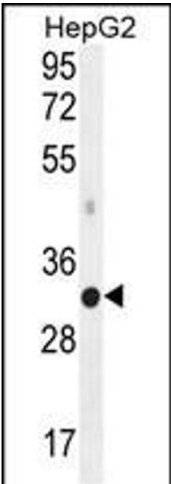
Preservative: Sodium azide

Precaution of Use: This product contains Sodium azide: a POISONOUS AND HAZARDOUS SUBSTANCE which should be handled by trained staff only.

Storage: 4 °C, -20 °C

Storage Comment: Maintain refrigerated at 2-8 °C for up to 6 months. For long term storage store at -20 °C in small aliquots to prevent freeze-thaw cycles.

Expiry Date: 6 months



Western Blotting

Image 1. MED6 Antibody (C-term) (ABIN656028 and ABIN2845402) western blot analysis in HepG2 cell line lysates (35 µg/lane). This demonstrates the MED6 antibody detected the MED6 protein (arrow).