

Datasheet for ABIN656033
anti-ZMYND10 antibody (AA 321-348)[Go to Product page](#)

3 Images

Overview

Quantity:	400 µL
Target:	ZMYND10
Binding Specificity:	AA 321-348
Reactivity:	Human
Host:	Rabbit
Clonality:	Polyclonal
Conjugate:	This ZMYND10 antibody is un-conjugated
Application:	Western Blotting (WB), Flow Cytometry (FACS), Immunohistochemistry (Paraffin-embedded Sections) (IHC (p))

Product Details

Immunogen:	This ZMYND10 antibody is generated from rabbits immunized with a KLH conjugated synthetic peptide between 321-348 amino acids from the Central region of human ZMYND10.
Clone:	RB20721
Isotype:	Ig Fraction
Purification:	This antibody is purified through a protein A column, followed by peptide affinity purification.

Target Details

Target:	ZMYND10
Alternative Name:	ZMYND10 (ZMYND10 Products)

Target Details

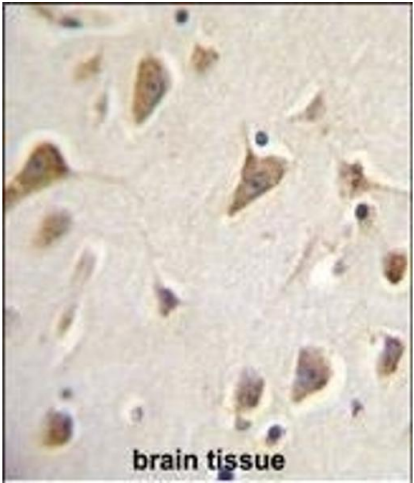
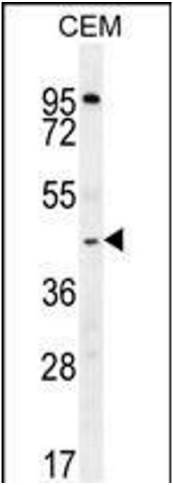
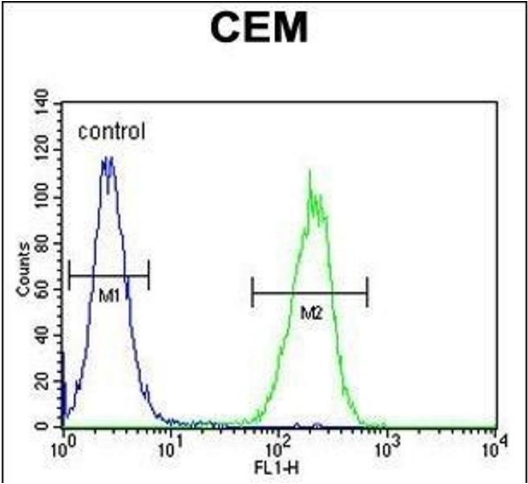
Background:	BLU is a candidate tumor suppressor gene, that spans 4.5 kb on 3p21.3. It encodes a 50 kd protein, which is commonly found in transcription repressors. It is suspected that BLU has a function in cell cycle progression. BLU is a stress-responsive gene regulated by E2F.12 It is commonly found to be downregulated in non-small cell lung cancer, esophagus squamous cell carcinoma and nasopharyngeal carcinoma (NPC).
Molecular Weight:	50344
Gene ID:	51364
NCBI Accession:	NP_056980
UniProt:	O75800

Application Details

Application Notes:	WB: 1:1000. IHC-P: 1:50~100. FC: 1:10~50
Restrictions:	For Research Use only

Handling

Format:	Liquid
Buffer:	Purified polyclonal antibody supplied in PBS with 0.09 % (W/V) sodium azide.
Preservative:	Sodium azide
Precaution of Use:	This product contains Sodium azide: a POISONOUS AND HAZARDOUS SUBSTANCE which should be handled by trained staff only.
Storage:	4 °C,-20 °C
Storage Comment:	Maintain refrigerated at 2-8 °C for up to 6 months. For long term storage store at -20 °C in small aliquots to prevent freeze-thaw cycles.
Expiry Date:	6 months



Flow Cytometry

Image 1. ZMYND10 Antibody (Center) (ABIN656033 and ABIN2845406) flow cytometric analysis of CEM cells (right histogram) compared to a negative control cell (left histogram). FITC-conjugated goat-anti-rabbit secondary antibodies were used for the analysis.

Western Blotting

Image 2. ZMYND10 Antibody (Center) (ABIN656033 and ABIN2845406) western blot analysis in CEM cell line lysates (35 μ g/lane). This demonstrates the ZMYND10 antibody detected the ZMYND10 protein (arrow).

Immunohistochemistry (Paraffin-embedded Sections)

Image 3. ZMYND10 Antibody (Center) (ABIN656033 and ABIN2845406) immunohistochemistry analysis in formalin fixed and paraffin embedded human brain tissue followed by peroxidase conjugation of the secondary antibody and DAB staining. This data demonstrates the use of ZMYND10 Antibody (Center) for immunohistochemistry. Clinical relevance has not been evaluated.