

Datasheet for ABIN656055
anti-RBPMS2 antibody (AA 113-141)



[Go to Product page](#)

2 Images

Overview

Quantity:	400 µL
Target:	RBPMS2
Binding Specificity:	AA 113-141
Reactivity:	Mouse
Host:	Rabbit
Clonality:	Polyclonal
Conjugate:	This RBPMS2 antibody is un-conjugated
Application:	Western Blotting (WB), Immunohistochemistry (Paraffin-embedded Sections) (IHC (p))

Product Details

Immunogen:	This RBPMS2 antibody is generated from rabbits immunized with a KLH conjugated synthetic peptide between 113-141 amino acids from the Central region of human RBPMS2.
Clone:	RB29796
Isotype:	Ig Fraction
Predicted Reactivity:	Zf, C, X
Purification:	This antibody is purified through a protein A column, followed by peptide affinity purification.

Target Details

Target:	RBPMS2
Alternative Name:	RBPMS2 (RBPMS2 Products)

Target Details

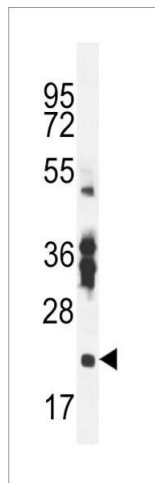
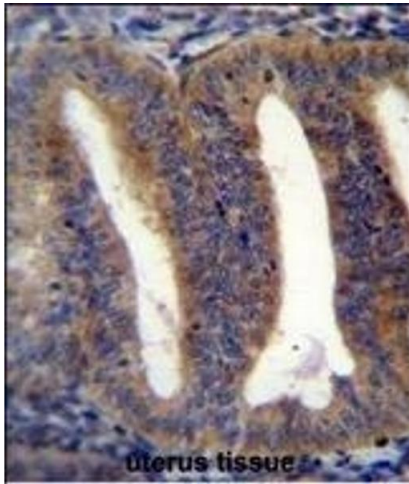
Background:	RBPM2 contains one RRM (RNA recognition motif) domain. The exact function of RBPM2 remains unknown.
Molecular Weight:	22497
Gene ID:	348093
NCBI Accession:	NP_919248
UniProt:	Q6ZRY4

Application Details

Application Notes:	WB: 1:1000. IHC-P: 1:10~50
Restrictions:	For Research Use only

Handling

Format:	Liquid
Buffer:	Purified polyclonal antibody supplied in PBS with 0.09 % (W/V) sodium azide.
Preservative:	Sodium azide
Precaution of Use:	This product contains Sodium azide: a POISONOUS AND HAZARDOUS SUBSTANCE which should be handled by trained staff only.
Storage:	4 °C,-20 °C
Storage Comment:	Maintain refrigerated at 2-8 °C for up to 6 months. For long term storage store at -20 °C in small aliquots to prevent freeze-thaw cycles.
Expiry Date:	6 months



Immunohistochemistry (Paraffin-embedded Sections)

Image 1. RBS2 Antibody (Center) (ABIN656055 and ABIN2845413) immunohistochemistry analysis in formalin fixed and paraffin embedded human uterus tissue followed by peroxidase conjugation of the secondary antibody and DAB staining. This data demonstrates the use of RBS2 Antibody (Center) for immunohistochemistry. Clinical relevance has not been evaluated.

Western Blotting

Image 2. RBS2 Antibody (Center) (ABIN656055 and ABIN2845413) western blot analysis in mouse stomach tissue lysates (35 µg/lane). This demonstrates the RBS2 antibody detected the RBS2 protein (arrow).