



[Go to Product page](#)

Datasheet for ABIN656063

anti-PRAMEF12 antibody (AA 107-135)

1 Image

Overview

Quantity:	400 µL
Target:	PRAMEF12
Binding Specificity:	AA 107-135
Reactivity:	Human
Host:	Rabbit
Clonality:	Polyclonal
Conjugate:	This PRAMEF12 antibody is un-conjugated
Application:	Western Blotting (WB)

Product Details

Immunogen:	This PRAMEF12 antibody is generated from rabbits immunized with a KLH conjugated synthetic peptide between 107-135 amino acids from the Central region of human PRAMEF12.
Clone:	RB29939
Isotype:	Ig Fraction
Purification:	This antibody is purified through a protein A column, followed by peptide affinity purification.

Target Details

Target:	PRAMEF12
Alternative Name:	PRAMEF12 (PRAMEF12 Products)
Molecular Weight:	54633

Target Details

Gene ID: 390999

NCBI Accession: [NP_001074299](#)

UniProt: [O95522](#)

Application Details

Application Notes: WB: 1:1000

Restrictions: For Research Use only

Handling

Format: Liquid

Buffer: Purified polyclonal antibody supplied in PBS with 0.09 % (W/V) sodium azide.

Preservative: Sodium azide

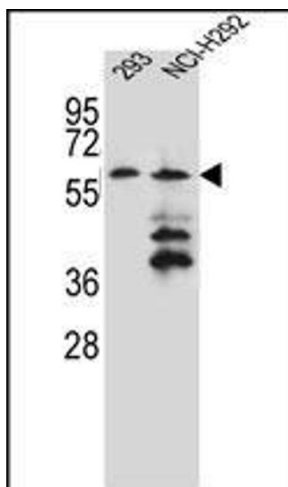
Precaution of Use: This product contains Sodium azide: a POISONOUS AND HAZARDOUS SUBSTANCE which should be handled by trained staff only.

Storage: 4 °C,-20 °C

Storage Comment: Maintain refrigerated at 2-8 °C for up to 6 months. For long term storage store at -20 °C in small aliquots to prevent freeze-thaw cycles.

Expiry Date: 6 months

Images



Western Blotting

Image 1. PREF12 Antibody (Center) (ABIN656063 and ABIN2845415) western blot analysis in 293,NCI- cell line lysates (35 µg/lane). This demonstrates the PREF12 antibody detected the PREF12 protein (arrow).