

Datasheet for ABIN656068  
**anti-OR4L1 antibody (C-Term)**[Go to Product page](#)

## 1 Image

## Overview

Quantity:	400 µL
Target:	OR4L1
Binding Specificity:	AA 276-304, C-Term
Reactivity:	Human
Host:	Rabbit
Clonality:	Polyclonal
Conjugate:	This OR4L1 antibody is un-conjugated
Application:	Western Blotting (WB)

## Product Details

Immunogen:	This OR4L1 antibody is generated from rabbits immunized with a KLH conjugated synthetic peptide between 276-304 amino acids from the C-terminal region of human OR4L1.
Clone:	RB29989
Isotype:	Ig Fraction
Purification:	This antibody is purified through a protein A column, followed by peptide affinity purification.

## Target Details

Target:	OR4L1
Alternative Name:	OR4L1 ( <a href="#">OR4L1 Products</a> )
Background:	Olfactory receptors interact with odorant molecules in the nose, to initiate a neuronal response

## Target Details

that triggers the perception of a smell. The olfactory receptor proteins are members of a large family of G-protein-coupled receptors (GPCR) arising from single coding-exon genes. Olfactory receptors share a 7-transmembrane domain structure with many neurotransmitter and hormone receptors and are responsible for the recognition and G protein-mediated transduction of odorant signals. The olfactory receptor gene family is the largest in the genome. The nomenclature assigned to the olfactory receptor genes and proteins for this organism is independent of other organisms.

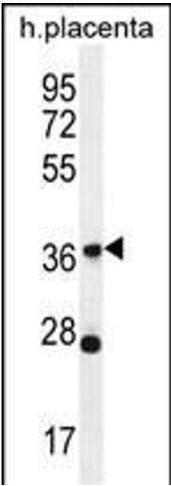
Molecular Weight:	35264
Gene ID:	122742
NCBI Accession:	<a href="#">NP_001004717</a>
UniProt:	<a href="#">Q8NH43</a>

## Application Details

Application Notes:	WB: 1:1000
Restrictions:	For Research Use only

## Handling

Format:	Liquid
Buffer:	Purified polyclonal antibody supplied in PBS with 0.09 % (W/V) sodium azide.
Preservative:	Sodium azide
Precaution of Use:	This product contains Sodium azide: a POISONOUS AND HAZARDOUS SUBSTANCE which should be handled by trained staff only.
Storage:	4 °C,-20 °C
Storage Comment:	Maintain refrigerated at 2-8 °C for up to 6 months. For long term storage store at -20 °C in small aliquots to prevent freeze-thaw cycles.
Expiry Date:	6 months



Western Blotting

**Image 1.** OR4L1 Antibody (C-term) (ABIN656068 and ABIN2845417) western blot analysis in human placenta tissue lysates (35 µg/lane). This demonstrates the OR4L1 antibody detected the OR4L1 protein (arrow).