

Datasheet for ABIN656071
anti-OR2T8 antibody (C-Term)[Go to Product page](#)

1 Image

Overview

Quantity:	400 µL
Target:	OR2T8
Binding Specificity:	AA 241-269, C-Term
Reactivity:	Human
Host:	Rabbit
Clonality:	Polyclonal
Conjugate:	This OR2T8 antibody is un-conjugated
Application:	Western Blotting (WB)

Product Details

Immunogen:	This OR2T8 antibody is generated from rabbits immunized with a KLH conjugated synthetic peptide between 241-269 amino acids from the C-terminal region of human OR2T8.
Clone:	RB29996
Isotype:	Ig Fraction
Purification:	This antibody is purified through a protein A column, followed by peptide affinity purification.

Target Details

Target:	OR2T8
Alternative Name:	OR2T8 (OR2T8 Products)
Background:	Olfactory receptors interact with odorant molecules in the nose, to initiate a neuronal response

Target Details

that triggers the perception of a smell. The olfactory receptor proteins are members of a large family of G-protein-coupled receptors (GPCR) arising from single coding-exon genes. Olfactory receptors share a 7-transmembrane domain structure with many neurotransmitter and hormone receptors and are responsible for the recognition and G protein-mediated transduction of odorant signals. The olfactory receptor gene family is the largest in the genome. The nomenclature assigned to the olfactory receptor genes and proteins for this organism is independent of other organisms.

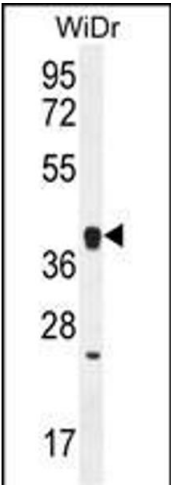
Molecular Weight:	34659
Gene ID:	343172
NCBI Accession:	NP_001005522
UniProt:	A6NH00

Application Details

Application Notes:	WB: 1:1000
Restrictions:	For Research Use only

Handling

Format:	Liquid
Buffer:	Purified polyclonal antibody supplied in PBS with 0.09 % (W/V) sodium azide.
Preservative:	Sodium azide
Precaution of Use:	This product contains Sodium azide: a POISONOUS AND HAZARDOUS SUBSTANCE which should be handled by trained staff only.
Storage:	4 °C,-20 °C
Storage Comment:	Maintain refrigerated at 2-8 °C for up to 6 months. For long term storage store at -20 °C in small aliquots to prevent freeze-thaw cycles.
Expiry Date:	6 months



Western Blotting

Image 1. OR2T8 Antibody (C-term) (ABIN656071 and ABIN2845419) western blot analysis in WiDr cell line lysates (35 µg/lane). This demonstrates the OR2T8 antibody detected the OR2T8 protein (arrow).