



[Go to Product page](#)

Datasheet for ABIN656075  
**anti-CLDN25 antibody (AA 99-128)**

1 Image

### Overview

Quantity:	400 µL
Target:	CLDN25
Binding Specificity:	AA 99-128
Reactivity:	Human
Host:	Rabbit
Clonality:	Polyclonal
Conjugate:	This CLDN25 antibody is un-conjugated
Application:	Western Blotting (WB)

### Product Details

Immunogen:	This hCG_1646420 antibody is generated from rabbits immunized with a KLH conjugated synthetic peptide between 99-128 amino acids from the Central region of human hCG_1646420.
Clone:	RB31006
Isotype:	Ig Fraction
Purification:	This antibody is purified through a protein A column, followed by peptide affinity purification.

### Target Details

Target:	CLDN25
Alternative Name:	hCG_1646420 ( <a href="#">CLDN25 Products</a> )

## Target Details

---

Background:	This gene encodes a member of the claudin family. Claudins are integral membrane proteins and components of tight junction strands. Tight junction strands serve as a physical barrier to prevent solutes and water from passing freely through the paracellular space between epithelial or endothelial cell sheets, and also play critical roles in maintaining cell polarity and signal transductions.
Molecular Weight:	25394
Gene ID:	644672
NCBI Accession:	<a href="#">NP_001094859</a>
UniProt:	<a href="#">C9JDP6</a>
Pathways:	<a href="#">Hepatitis C</a>

## Application Details

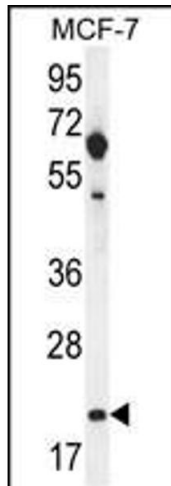
---

Application Notes:	WB: 1:1000
Restrictions:	For Research Use only

## Handling

---

Format:	Liquid
Buffer:	Purified polyclonal antibody supplied in PBS with 0.09 % (W/V) sodium azide.
Preservative:	Sodium azide
Precaution of Use:	This product contains Sodium azide: a POISONOUS AND HAZARDOUS SUBSTANCE which should be handled by trained staff only.
Storage:	4 °C, -20 °C
Storage Comment:	Maintain refrigerated at 2-8 °C for up to 6 months. For long term storage store at -20 °C in small aliquots to prevent freeze-thaw cycles.
Expiry Date:	6 months



#### Western Blotting

**Image 1.** hCG\_1646420 Antibody (Center) (ABIN656075 and ABIN2845422) western blot analysis in MCF-7 cell line lysates (35 µg/lane). This demonstrates the hCG\_1646420 antibody detected the hCG\_1646420 protein (arrow).