



[Go to Product page](#)

Datasheet for ABIN656076

## anti-PRAMEF20 antibody (C-Term)

### 1 Image

#### Overview

Quantity:	400 µL
Target:	PRAMEF20
Binding Specificity:	AA 394-423, C-Term
Reactivity:	Human
Host:	Rabbit
Clonality:	Polyclonal
Conjugate:	This PRAMEF20 antibody is un-conjugated
Application:	Western Blotting (WB)

#### Product Details

Immunogen:	This PRAMEF20 antibody is generated from rabbits immunized with a KLH conjugated synthetic peptide between 394-423 amino acids from the C-terminal region of human PRAMEF20.
Clone:	RB31008
Isotype:	Ig Fraction
Purification:	This antibody is purified through a protein A column, followed by peptide affinity purification.

#### Target Details

Target:	PRAMEF20
Alternative Name:	PRAMEF20 ( <a href="#">PRAMEF20 Products</a> )

## Target Details

Molecular Weight:	54784
Gene ID:	645425, 391001
NCBI Accession:	<a href="#">NP_001093322</a> , <a href="#">NP_001093584</a>
UniProt:	<a href="#">Q5VT98</a>

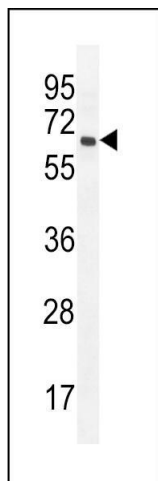
## Application Details

Application Notes:	WB: 1:1000
Restrictions:	For Research Use only

## Handling

Format:	Liquid
Buffer:	Purified polyclonal antibody supplied in PBS with 0.09 % (W/V) sodium azide.
Preservative:	Sodium azide
Precaution of Use:	This product contains Sodium azide: a POISONOUS AND HAZARDOUS SUBSTANCE which should be handled by trained staff only.
Storage:	4 °C, -20 °C
Storage Comment:	Maintain refrigerated at 2-8 °C for up to 6 months. For long term storage store at -20 °C in small aliquots to prevent freeze-thaw cycles.
Expiry Date:	6 months

## Images



### Western Blotting

**Image 1.** PREF20 Antibody (C-term) (ABIN656076 and ABIN2845423) western blot analysis in MDA-M cell line lysates (35 µg/lane). This demonstrates the PREF20 antibody detected the PREF20 protein (arrow).