

Datasheet for ABIN656080
anti-JAG1 antibody (C-Term)[Go to Product page](#)

2 Images

Overview

Quantity:	400 µL
Target:	JAG1
Binding Specificity:	AA 1122-1150, C-Term
Reactivity:	Human
Host:	Rabbit
Clonality:	Polyclonal
Conjugate:	This JAG1 antibody is un-conjugated
Application:	Western Blotting (WB), Flow Cytometry (FACS)

Product Details

Immunogen:	This JAG1 antibody is generated from rabbits immunized with a KLH conjugated synthetic peptide between 1122-1150 amino acids from the C-terminal region of human JAG1.
Clone:	RB31719
Isotype:	Ig Fraction
Predicted Reactivity:	M, Rat
Purification:	This antibody is purified through a protein A column, followed by peptide affinity purification.

Target Details

Target:	JAG1
Alternative Name:	JAG1 (JAG1 Products)

Target Details

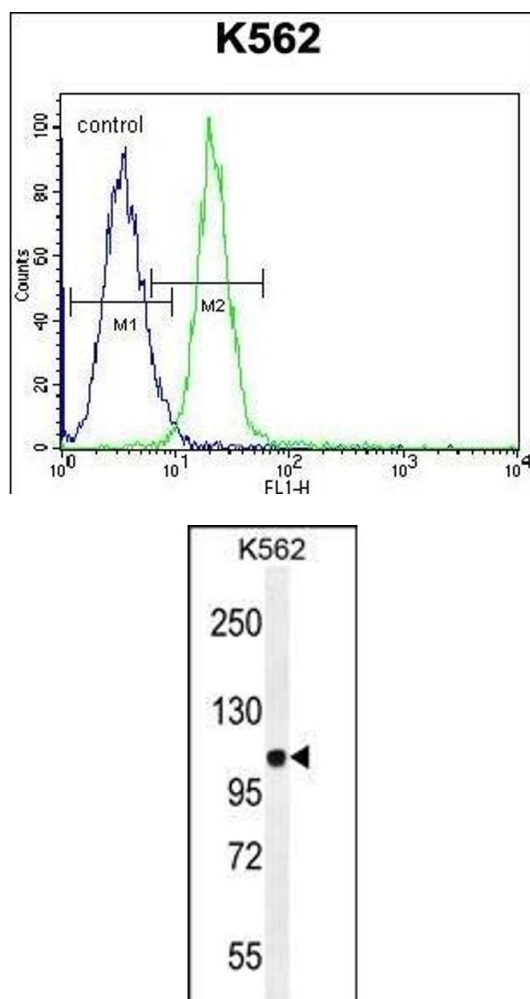
Background:	The jagged 1 protein encoded by JAG1 is the human homolog of the Drosophila jagged protein. Human jagged 1 is the ligand for the receptor notch 1, the latter a human homolog of the Drosophila jagged receptor notch. Mutations that alter the jagged 1 protein cause Alagille syndrome. Jagged 1 signalling through notch 1 has also been shown to play a role in hematopoiesis.
Molecular Weight:	133799
Gene ID:	182
NCBI Accession:	NP_000205
UniProt:	P78504
Pathways:	Notch Signaling , Stem Cell Maintenance

Application Details

Application Notes:	WB: 1:1000. FC: 1:10~50
Restrictions:	For Research Use only

Handling

Format:	Liquid
Buffer:	Purified polyclonal antibody supplied in PBS with 0.09 % (W/V) sodium azide.
Preservative:	Sodium azide
Precaution of Use:	This product contains Sodium azide: a POISONOUS AND HAZARDOUS SUBSTANCE which should be handled by trained staff only.
Storage:	4 °C, -20 °C
Storage Comment:	Maintain refrigerated at 2-8 °C for up to 6 months. For long term storage store at -20 °C in small aliquots to prevent freeze-thaw cycles.
Expiry Date:	6 months



Flow Cytometry

Image 1. JAG1 Antibody (C-term) (ABIN656080 and ABIN2845426) flow cytometric analysis of K562 cells (right histogram) compared to a negative control cell (left histogram). FITC-conjugated goat-anti-rabbit secondary antibodies were used for the analysis.

Western Blotting

Image 2. JAG1 Antibody (C-term) (ABIN656080 and ABIN2845426) western blot analysis in K562 cell line lysates (35 μ g/lane). This demonstrates the JAG1 antibody detected the JAG1 protein (arrow).