

Datasheet for ABIN656083  
**anti-CYBA antibody (C-Term)**[Go to Product page](#)

## 2 Images

## Overview

Quantity:	400 µL
Target:	CYBA
Binding Specificity:	AA 117-145, C-Term
Reactivity:	Human
Host:	Rabbit
Clonality:	Polyclonal
Conjugate:	This CYBA antibody is un-conjugated
Application:	Western Blotting (WB), Immunofluorescence (IF)

## Product Details

Immunogen:	This CYBA antibody is generated from rabbits immunized with a KLH conjugated synthetic peptide between 117-145 amino acids from the C-terminal region of human CYBA.
Clone:	RB31767
Isotype:	Ig Fraction
Purification:	This antibody is purified through a protein A column, followed by peptide affinity purification.

## Target Details

Target:	CYBA
Alternative Name:	CYBA ( <a href="#">CYBA Products</a> )
Background:	Cytochrome b is comprised of a light chain (alpha) and a heavy chain (beta). This gene encodes

## Target Details

the light, alpha subunit which has been proposed as a primary component of the microbicidal oxidase system of phagocytes. Mutations in this gene are associated with autosomal recessive chronic granulomatous disease (CGD), that is characterized by the failure of activated phagocytes to generate superoxide, which is important for the microbicidal activity of these cells.

Molecular Weight: 21013

Gene ID: 1535

NCBI Accession: [NP\\_000092](#)

UniProt: [P13498](#)

Pathways: [Regulation of Systemic Arterial Blood Pressure by Hormones, Carbohydrate Homeostasis](#)

## Application Details

Application Notes: IF: 1:10~50. WB: 1:1000

Restrictions: For Research Use only

## Handling

Format: Liquid

Buffer: Purified polyclonal antibody supplied in PBS with 0.09 % (W/V) sodium azide.

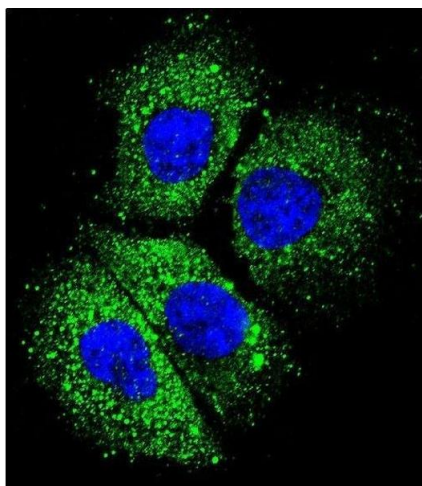
Preservative: Sodium azide

Precaution of Use: This product contains Sodium azide: a POISONOUS AND HAZARDOUS SUBSTANCE which should be handled by trained staff only.

Storage: 4 °C, -20 °C

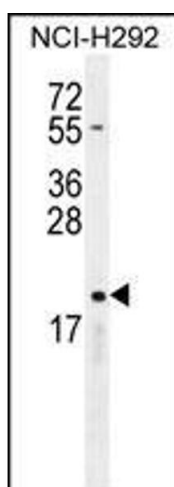
Storage Comment: Maintain refrigerated at 2-8 °C for up to 6 months. For long term storage store at -20 °C in small aliquots to prevent freeze-thaw cycles.

Expiry Date: 6 months



#### Immunofluorescence

**Image 1.** Confocal immunofluorescent analysis of CYBA Antibody (C-term) (ABIN656083 and ABIN2845428) with NCI- cell followed by Alexa Fluor 488-conjugated goat anti-rabbit IgG (green). DI was used to stain the cell nuclear (blue).



#### Western Blotting

**Image 2.** CYBA Antibody (C-term) (ABIN656083 and ABIN2845428) western blot analysis in NCI- cell line lysates (35 µg/lane). This demonstrates the CYBA antibody detected the CYBA protein (arrow).