

Datasheet for ABIN656084
anti-COL21A1 antibody (N-Term)

3 Images

[Go to Product page](#)

Overview

Quantity:	400 µL
Target:	COL21A1
Binding Specificity:	AA 204-232, N-Term
Reactivity:	Human
Host:	Rabbit
Clonality:	Polyclonal
Conjugate:	This COL21A1 antibody is un-conjugated
Application:	Western Blotting (WB), Immunofluorescence (IF), Immunohistochemistry (Paraffin-embedded Sections) (IHC (p))

Product Details

Immunogen:	This COL21A1 antibody is generated from rabbits immunized with a KLH conjugated synthetic peptide between 204-232 amino acids from the N-terminal region of human COL21A1.
Clone:	RB31769
Isotype:	Ig Fraction
Purification:	This antibody is purified through a protein A column, followed by peptide affinity purification.

Target Details

Target:	COL21A1
Alternative Name:	COL21A1 (COL21A1 Products)

Target Details

Background: This gene encodes the alpha chain of type XXI collagen, a member of the FACIT collagen family (fibril-associated collagens with interrupted helices). Type XXI collagen is localized to tissues containing type I collagen so, like other members of this collagen family, it may serve to maintain the integrity of the extracellular matrix. An alternatively spliced transcript variant has been described, but its full-length nature has yet to be determined.

Molecular Weight: 99369

Gene ID: 81578

NCBI Accession: [NP_110447](#)

UniProt: [Q96P44](#)

Application Details

Application Notes: IF: 1:10~50. WB: 1:1000. IHC-P: 1:10~50

Restrictions: For Research Use only

Handling

Format: Liquid

Buffer: Purified polyclonal antibody supplied in PBS with 0.09 % (W/V) sodium azide.

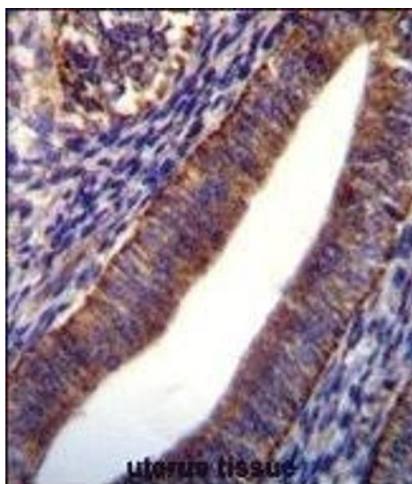
Preservative: Sodium azide

Precaution of Use: This product contains Sodium azide: a POISONOUS AND HAZARDOUS SUBSTANCE which should be handled by trained staff only.

Storage: 4 °C,-20 °C

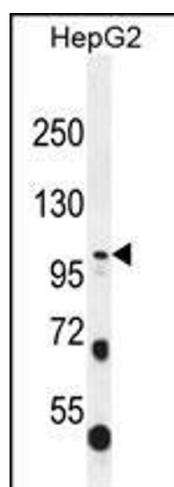
Storage Comment: Maintain refrigerated at 2-8 °C for up to 6 months. For long term storage store at -20 °C in small aliquots to prevent freeze-thaw cycles.

Expiry Date: 6 months



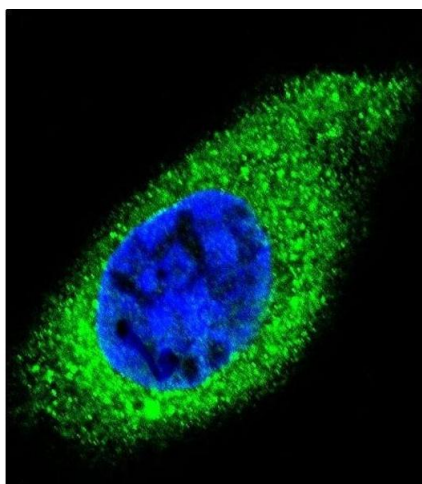
Immunohistochemistry (Paraffin-embedded Sections)

Image 1. COL21A1 Antibody (N-term) (ABIN656084 and ABIN2845430) immunohistochemistry analysis in formalin fixed and paraffin embedded human uterus tissue followed by peroxidase conjugation of the secondary antibody and DAB staining. This data demonstrates the use of COL21A1 Antibody (N-term) for immunohistochemistry. Clinical relevance has not been evaluated.



Western Blotting

Image 2. COL21A1 Antibody (N-term) (ABIN656084 and ABIN2845430) western blot analysis in HepG2 cell line lysates (35 µg/lane). This demonstrates the COL21A1 antibody detected the COL21A1 protein (arrow).



Immunofluorescence

Image 3. Confocal immunofluorescent analysis of COL21A1 Antibody (N-term) (ABIN656084 and ABIN2845430) with HepG2 cell followed by Alexa Fluor 488-conjugated goat anti-rabbit IgG (green). DAPI was used to stain the cell nuclear (blue).