



Datasheet for ABIN656085
anti-CPSF7 antibody (C-Term)



[Go to Product page](#)

2 Images

Overview

Quantity:	400 µL
Target:	CPSF7
Binding Specificity:	AA 427-455, C-Term
Reactivity:	Human
Host:	Rabbit
Clonality:	Polyclonal
Conjugate:	This CPSF7 antibody is un-conjugated
Application:	Western Blotting (WB), Flow Cytometry (FACS)

Product Details

Immunogen:	This CPSF7 antibody is generated from rabbits immunized with a KLH conjugated synthetic peptide between 427-455 amino acids from the C-terminal region of human CPSF7.
Clone:	RB31941
Isotype:	Ig Fraction
Predicted Reactivity:	M, Rat
Purification:	This antibody is purified through a protein A column, followed by peptide affinity purification.

Target Details

Target:	CPSF7
Alternative Name:	CPSF7 (CPSF7 Products)

Target Details

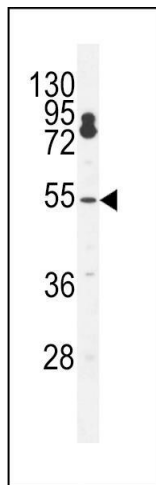
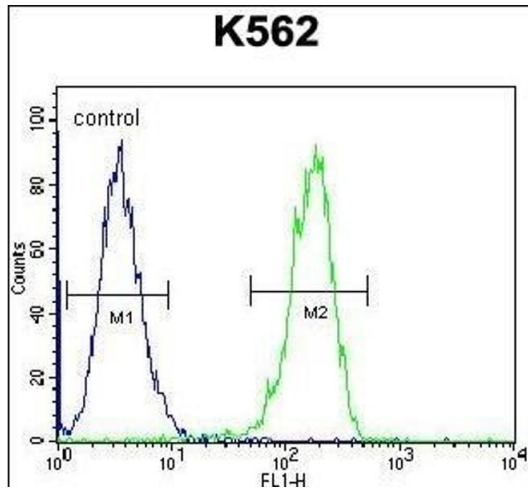
Background:	CPSF7 is probable a component of the cleavage factor Im complex (CFIm) that plays a key role in pre-mRNA 3' processing. Binds to cleavage and polyadenylation RNA substrates.
Molecular Weight:	52050
Gene ID:	79869
NCBI Accession:	NP_001129512 , NP_001136037 , NP_079087
UniProt:	Q8N684

Application Details

Application Notes:	WB: 1:1000. FC: 1:10~50
Restrictions:	For Research Use only

Handling

Format:	Liquid
Buffer:	Purified polyclonal antibody supplied in PBS with 0.09 % (W/V) sodium azide.
Preservative:	Sodium azide
Precaution of Use:	This product contains Sodium azide: a POISONOUS AND HAZARDOUS SUBSTANCE which should be handled by trained staff only.
Storage:	4 °C,-20 °C
Storage Comment:	Maintain refrigerated at 2-8 °C for up to 6 months. For long term storage store at -20 °C in small aliquots to prevent freeze-thaw cycles.
Expiry Date:	6 months



Flow Cytometry

Image 1. CPSF7 Antibody (C-term) (ABIN656085 and ABIN2845431) flow cytometric analysis of K562 cells (right histogram) compared to a negative control cell (left histogram). FITC-conjugated goat-anti-rabbit secondary antibodies were used for the analysis.

Western Blotting

Image 2. CPSF7 Antibody (C-term) (ABIN656085 and ABIN2845431) western blot analysis in K562 cell line lysates (35 µg/lane). This demonstrates the CPSF7 antibody detected the CPSF7 protein (arrow).