

Datasheet for ABIN656089  
**anti-SDHD antibody (N-Term)**

## 5 Images

[Go to Product page](#)

## Overview

Quantity:	400 µL
Target:	SDHD
Binding Specificity:	AA 13-42, N-Term
Reactivity:	Human
Host:	Rabbit
Clonality:	Polyclonal
Conjugate:	This SDHD antibody is un-conjugated
Application:	Western Blotting (WB), Immunofluorescence (IF), Flow Cytometry (FACS), Immunohistochemistry (Paraffin-embedded Sections) (IHC (p))

## Product Details

Immunogen:	This SDHD antibody is generated from rabbits immunized with a KLH conjugated synthetic peptide between 13-42 amino acids from the N-terminal region of human SDHD.
Clone:	RB31963
Isotype:	Ig Fraction
Purification:	This antibody is purified through a protein A column, followed by peptide affinity purification.

## Target Details

Target:	SDHD
Alternative Name:	SDHD ( <a href="#">SDHD Products</a> )

## Target Details

**Background:** Complex II of the respiratory chain, which is specifically involved in the oxidation of succinate, carries electrons from FADH to CoQ. The complex is composed of four nuclear-encoded subunits and is localized in the mitochondrial inner membrane. The subunit D protein is one of two integral membrane proteins anchoring the complex to the matrix side of the membrane. Mutations in SDHD have been linked to hereditary paraganglioma.

**Molecular Weight:** 17043

**Gene ID:** 6392

**NCBI Accession:** [NP\\_001263432](#), [NP\\_001263433](#), [NP\\_001263435](#), [NP\\_002993](#)

**UniProt:** [O14521](#)

## Application Details

**Application Notes:** IF: 1:10~50. WB: 1:2000. WB: 1:1000. IHC-P: 1:10~50. FC: 1:10~50

**Restrictions:** For Research Use only

## Handling

**Format:** Liquid

**Buffer:** Purified polyclonal antibody supplied in PBS with 0.09 % (W/V) sodium azide.

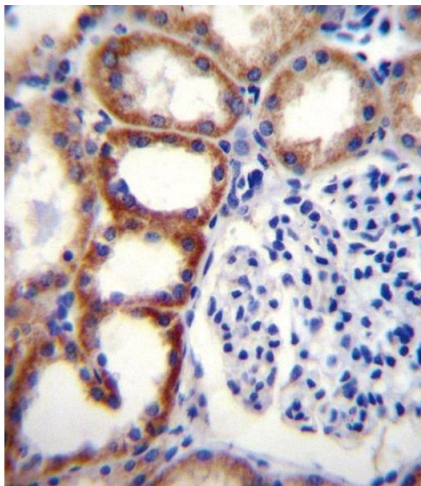
**Preservative:** Sodium azide

**Precaution of Use:** This product contains Sodium azide: a POISONOUS AND HAZARDOUS SUBSTANCE which should be handled by trained staff only.

**Storage:** 4 °C,-20 °C

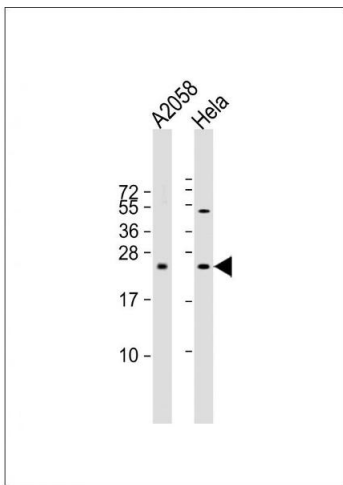
**Storage Comment:** Maintain refrigerated at 2-8 °C for up to 6 months. For long term storage store at -20 °C in small aliquots to prevent freeze-thaw cycles.

**Expiry Date:** 6 months



**Immunohistochemistry (Paraffin-embedded Sections)**

**Image 1.** SDHD Antibody (N-term) (ABIN656089 and ABIN2845433) immunohistochemistry analysis in formalin fixed and paraffin embedded human kidney tissue followed by peroxidase conjugation of the secondary antibody and DAB staining. This data demonstrates the use of SDHD Antibody (N-term) for immunohistochemistry. Clinical relevance has not been evaluated.



**Western Blotting**

**Image 2.** All lanes : Anti-SDHD Antibody (N-term) at 1:2000 dilution Lane 1: whole cell lysate Lane 2: HeLa whole cell lysate Lysates/proteins at 20 µg per lane. Secondary Goat Anti-Rabbit IgG, (H+L), Peroxidase conjugated at 1/10000 dilution. Predicted band size : 17 kDa Blocking/Dilution buffer: 5 % NFDM/TBST.



**Western Blotting**

**Image 3.** SDHD Antibody (N-term) (ABIN656089 and ABIN2845433) western blot analysis in HeLa cell line lysates (35 µg/lane). This demonstrates the SDHD antibody detected the SDHD protein (arrow).

Please check the [product details page](#) for more images. Overall 5 images are available for ABIN656089.