

Datasheet for ABIN656091
anti-PCDHAC2 antibody (AA 616-644)[Go to Product page](#)

4 Images

Overview

Quantity:	400 µL
Target:	PCDHAC2
Binding Specificity:	AA 616-644
Reactivity:	Human
Host:	Rabbit
Clonality:	Polyclonal
Conjugate:	This PCDHAC2 antibody is un-conjugated
Application:	Western Blotting (WB), Flow Cytometry (FACS), Immunofluorescence (IF), Immunohistochemistry (Paraffin-embedded Sections) (IHC (p))

Product Details

Immunogen:	This PCDHAC2 antibody is generated from rabbits immunized with a KLH conjugated synthetic peptide between 616-644 amino acids from the Central region of human PCDHAC2.
Clone:	RB31967
Isotype:	Ig Fraction
Purification:	This antibody is purified through a protein A column, followed by peptide affinity purification.

Target Details

Target:	PCDHAC2
Alternative Name:	PCDHAC2 (PCDHAC2 Products)

Target Details

Background: This gene is a member of the protocadherin alpha gene cluster, one of three related gene clusters tandemly linked on chromosome five that demonstrate an unusual genomic organization similar to that of B-cell and T-cell receptor gene clusters. The alpha gene cluster is composed of 15 cadherin superfamily genes related to the mouse CNR genes and consists of 13 highly similar and 2 more distantly related coding sequences. The tandem array of 15 N-terminal exons, or variable exons, are followed by downstream C-terminal exons, or constant exons, which are shared by all genes in the cluster. The large, uninterrupted N-terminal exons each encode six cadherin ectodomains while the C-terminal exons encode the cytoplasmic domain. These neural cadherin-like cell adhesion proteins are integral plasma membrane proteins that most likely play a critical role in the establishment and function of specific cell-cell connections in the brain. Alternative splicing has been observed and additional variants have been suggested but their full-length nature has yet to be determined.

Molecular Weight: 109450

Gene ID: 56134

NCBI Accession: [NP_061722](#), [NP_114089](#)

UniProt: [Q9Y5I4](#)

Application Details

Application Notes: IF: 1:10~50. WB: 1:1000. IHC-P: 1:10~50. FC: 1:10~50

Restrictions: For Research Use only

Handling

Format: Liquid

Buffer: Purified polyclonal antibody supplied in PBS with 0.09 % (W/V) sodium azide.

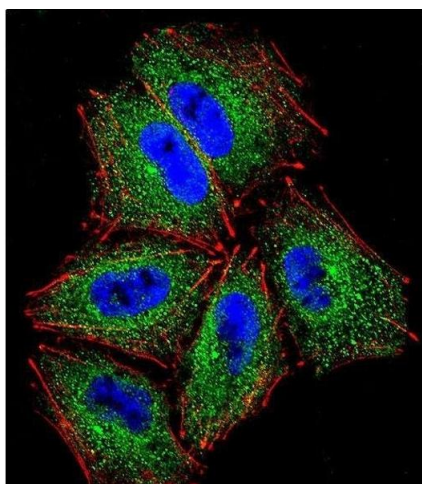
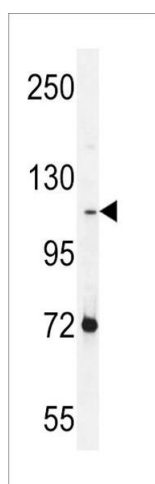
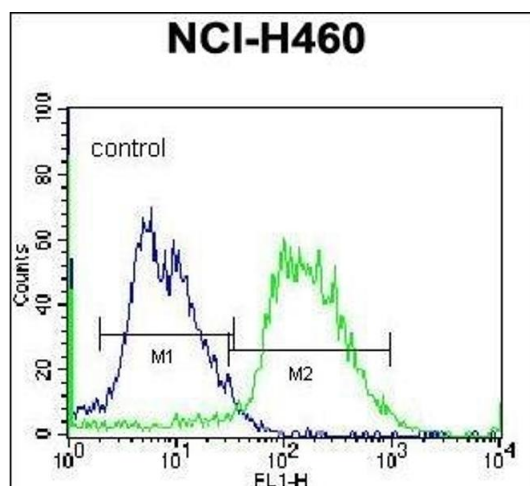
Preservative: Sodium azide

Precaution of Use: This product contains Sodium azide: a POISONOUS AND HAZARDOUS SUBSTANCE which should be handled by trained staff only.

Storage: 4 °C, -20 °C

Storage Comment: Maintain refrigerated at 2-8 °C for up to 6 months. For long term storage store at -20 °C in small aliquots to prevent freeze-thaw cycles.

Expiry Date: 6 months



Flow Cytometry

Image 1. PCDHAC2 Antibody (Center) flow cytometric analysis of NCI- cells (right histogram) compared to a negative control cell (left histogram). FITC-conjugated donkey-anti-rabbit secondary antibodies were used for the analysis.

Western Blotting

Image 2. PCDHAC2 Antibody (Center) (ABIN656091 and ABIN2845434) western blot analysis in NCI- cell line lysates (35 µg/lane). This demonstrates the PCDHAC2 antibody detected the PCDHAC2 protein (arrow).

Immunofluorescence

Image 3. Confocal immunofluorescent analysis of PCDHAC2 Antibody (Center) (ABIN656091 and ABIN2845434) with NCI- cell followed by Alexa Fluor 488-conjugated goat anti-rabbit IgG (green). Actin filaments have been labeled with Alexa Fluor 555 phalloidin (red). DAPI was used to stain the cell nuclear (blue).

Please check the [product details page](#) for more images. Overall 4 images are available for ABIN656091.