

Datasheet for ABIN656092
anti-NKD2 antibody (C-Term)[Go to Product page](#)

4 Images

Overview

Quantity:	400 µL
Target:	NKD2
Binding Specificity:	AA 366-393, C-Term
Reactivity:	Human
Host:	Rabbit
Clonality:	Polyclonal
Conjugate:	This NKD2 antibody is un-conjugated
Application:	Western Blotting (WB), Flow Cytometry (FACS), Immunofluorescence (IF), Immunohistochemistry (Paraffin-embedded Sections) (IHC (p))

Product Details

Immunogen:	This NKD2 antibody is generated from rabbits immunized with a KLH conjugated synthetic peptide between 366-393 amino acids from the C-terminal region of human NKD2.
Clone:	RB31974
Isotype:	Ig Fraction
Purification:	This antibody is purified through a protein A column, followed by peptide affinity purification.

Target Details

Target:	NKD2
Alternative Name:	NKD2 (NKD2 Products)

Target Details

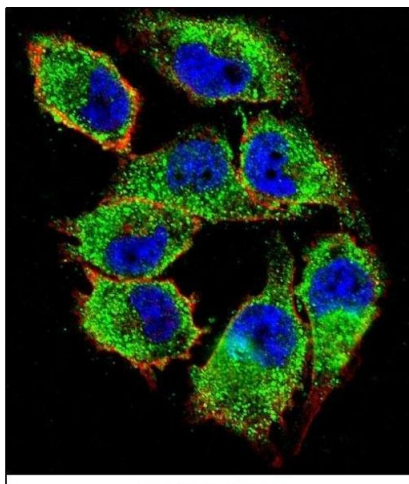
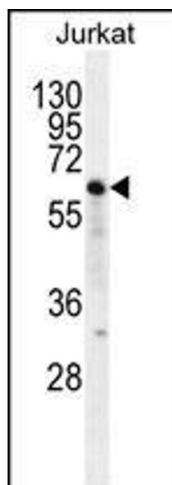
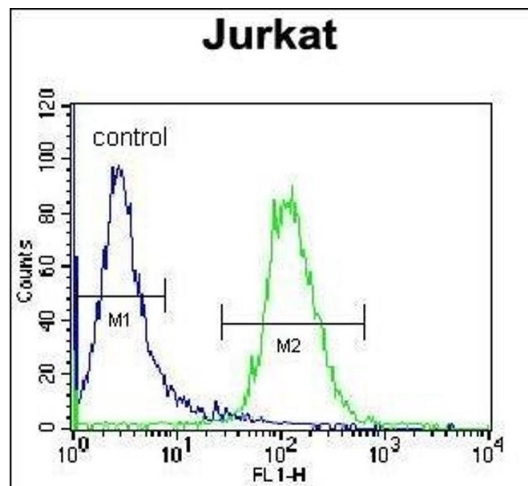
Background:	In the mouse, Nkd is a Dishevelled (see DVL1, MIM 601365)-binding protein that functions as a negative regulator of the Wnt (see WNT1, MIM 164820)-beta-catenin (see MIM 116806)-Tcf (see MIM 602272) signaling pathway.
Molecular Weight:	50055
Gene ID:	85409
NCBI Accession:	NP_001258011 , NP_149111
UniProt:	Q969F2

Application Details

Application Notes:	IF: 1:10~50. WB: 1:1000. IHC-P: 1:10~50. FC: 1:10~50
Restrictions:	For Research Use only

Handling

Format:	Liquid
Buffer:	Purified polyclonal antibody supplied in PBS with 0.09 % (W/V) sodium azide.
Preservative:	Sodium azide
Precaution of Use:	This product contains Sodium azide: a POISONOUS AND HAZARDOUS SUBSTANCE which should be handled by trained staff only.
Storage:	4 °C, -20 °C
Storage Comment:	Maintain refrigerated at 2-8 °C for up to 6 months. For long term storage store at -20 °C in small aliquots to prevent freeze-thaw cycles.
Expiry Date:	6 months



Flow Cytometry

Image 1. NKD2 Antibody (C-term) (ABIN656092 and ABIN2845435) flow cytometric analysis of Jurkat cells (right histogram) compared to a negative control cell (left histogram). FITC-conjugated donkey-anti-rabbit secondary antibodies were used for the analysis.

Western Blotting

Image 2. NKD2 Antibody (C-term) (ABIN656092 and ABIN2845435) western blot analysis in Jurkat cell line lysates (35 µg/lane). This demonstrates the NKD2 antibody detected the NKD2 protein (arrow).

Immunofluorescence

Image 3. Confocal immunofluorescent analysis of NKD2 Antibody (C-term) (ABIN656092 and ABIN2845435) with cell followed by Alexa Fluor 488-conjugated goat anti-rabbit IgG (green). Actin filaments have been labeled with Alexa Fluor 555 phalloidin (red). DAPI was used to stain the cell nuclear (blue).

Please check the [product details page](#) for more images. Overall 4 images are available for ABIN656092.