



[Go to Product page](#)

Datasheet for ABIN656095
anti-PHF20 antibody (N-Term)

2 Images

Overview

Quantity:	400 µL
Target:	PHF20
Binding Specificity:	AA 123-151, N-Term
Reactivity:	Human
Host:	Rabbit
Clonality:	Polyclonal
Conjugate:	This PHF20 antibody is un-conjugated
Application:	Western Blotting (WB), Immunohistochemistry (Paraffin-embedded Sections) (IHC (p))

Product Details

Immunogen:	This PHF20 antibody is generated from rabbits immunized with a KLH conjugated synthetic peptide between 123-151 amino acids from the N-terminal region of human PHF20.
Clone:	RB31983
Isotype:	Ig Fraction
Predicted Reactivity:	M
Purification:	This antibody is purified through a protein A column, followed by peptide affinity purification.

Target Details

Target:	PHF20
Alternative Name:	PHF20 (PHF20 Products)

Target Details

Background: PHF20 is possible a transcription factor.

Molecular Weight: 115386

Gene ID: 51230

NCBI Accession: [NP_057520](#)

UniProt: [Q9BVI0](#)

Application Details

Application Notes: WB: 1:1000. IHC-P: 1:10~50

Restrictions: For Research Use only

Handling

Format: Liquid

Buffer: Purified polyclonal antibody supplied in PBS with 0.09 % (W/V) sodium azide.

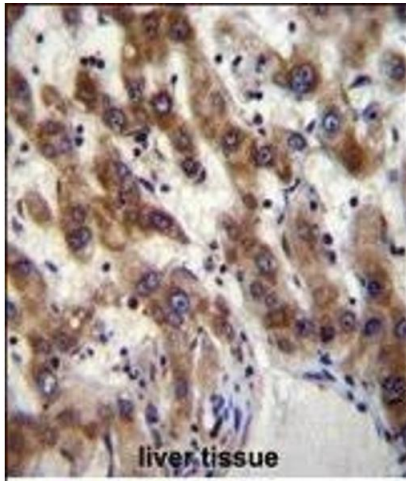
Preservative: Sodium azide

Precaution of Use: This product contains Sodium azide: a POISONOUS AND HAZARDOUS SUBSTANCE which should be handled by trained staff only.

Storage: 4 °C,-20 °C

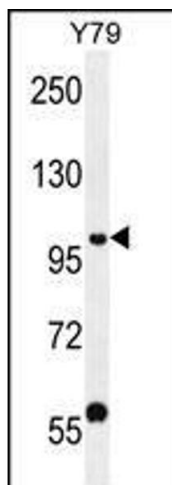
Storage Comment: Maintain refrigerated at 2-8 °C for up to 6 months. For long term storage store at -20 °C in small aliquots to prevent freeze-thaw cycles.

Expiry Date: 6 months



Immunohistochemistry (Paraffin-embedded Sections)

Image 1. PHF20 Antibody (N-term) (ABIN656095 and ABIN2845438) immunohistochemistry analysis in formalin fixed and paraffin embedded human liver tissue followed by peroxidase conjugation of the secondary antibody and DAB staining. This data demonstrates the use of PHF20 Antibody (N-term) for immunohistochemistry. Clinical relevance has not been evaluated.



Western Blotting

Image 2. PHF20 Antibody (N-term) (ABIN656095 and ABIN2845438) western blot analysis in Y79 cell line lysates (35 µg/lane). This demonstrates the PHF20 antibody detected the PHF20 protein (arrow).