

Datasheet for ABIN656105
anti-Tbpl2 antibody (N-Term)

3 Images

[Go to Product page](#)

Overview

Quantity:	400 µL
Target:	Tbpl2
Binding Specificity:	AA 12-39, N-Term
Reactivity:	Human
Host:	Rabbit
Clonality:	Polyclonal
Conjugate:	This Tbpl2 antibody is un-conjugated
Application:	Western Blotting (WB), Immunofluorescence (IF), Immunohistochemistry (Paraffin-embedded Sections) (IHC (p))

Product Details

Immunogen:	This TBPL2 antibody is generated from rabbits immunized with a KLH conjugated synthetic peptide between 12-39 amino acids from the N-terminal region of human TBPL2.
Clone:	RB32201
Isotype:	Ig Fraction
Purification:	This antibody is purified through a protein A column, followed by peptide affinity purification.

Target Details

Target:	Tbpl2
Alternative Name:	TBPL2 (Tbpl2 Products)

Target Details

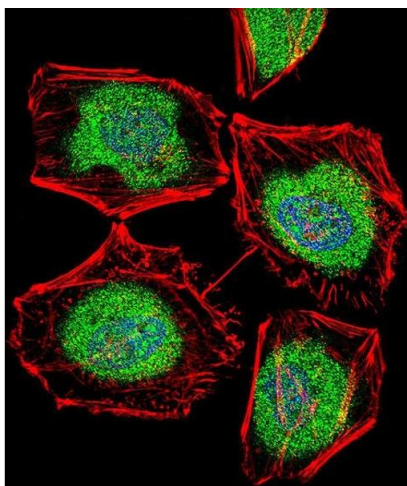
Background:	TBPL2 is a transcription factor required in complex with TAF3 for the differentiation of myoblasts into myocytes. The complex replaces TFIID at specific promoters at an early stage in the differentiation process (By similarity).
Molecular Weight:	41524
Gene ID:	387332
NCBI Accession:	NP_950248
UniProt:	Q6SJ96
Pathways:	Protein targeting to Nucleus , Platelet-derived growth Factor Receptor Signaling

Application Details

Application Notes:	IF: 1:10~50. WB: 1:1000. IHC-P: 1:10~50
Restrictions:	For Research Use only

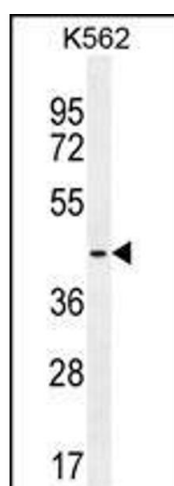
Handling

Format:	Liquid
Buffer:	Purified polyclonal antibody supplied in PBS with 0.09 % (W/V) sodium azide.
Preservative:	Sodium azide
Precaution of Use:	This product contains Sodium azide: a POISONOUS AND HAZARDOUS SUBSTANCE which should be handled by trained staff only.
Storage:	4 °C,-20 °C
Storage Comment:	Maintain refrigerated at 2-8 °C for up to 6 months. For long term storage store at -20 °C in small aliquots to prevent freeze-thaw cycles.
Expiry Date:	6 months



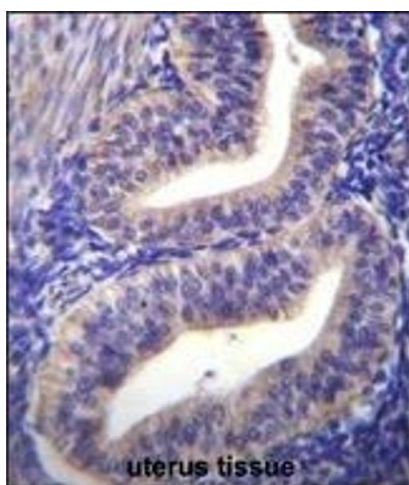
Immunofluorescence

Image 1. Fluorescent confocal image of HeLa cell stained with TBPL2 Antibody (N-term) (ABIN656105 and ABIN2845447). HeLa cells were fixed with 4 % PFA (20 min), permeabilized with Triton X-100 (0.1 %, 10 min), then incubated with TBPL2 primary antibody (1:25, 1 h at 37 °C). For secondary antibody, Alexa Fluor® 488 conjugated donkey anti-rabbit antibody (green) was used (1:400, 50 min at 37 °C). Cytoplasmic actin was counterstained with Alexa Fluor® 555 (red) conjugated Phalloidin (7 units/mL, 1 h at 37 °C). Nuclei were counterstained with DAPI (blue) (10 µg/mL, 10 min). TBPL2 immunoreactivity is localized to Nucleus and Cytoplasm significantly.



Western Blotting

Image 2. TBPL2 Antibody (N-term) (ABIN656105 and ABIN2845447) western blot analysis in K562 cell line lysates (35 µg/lane). This demonstrates the TBPL2 antibody detected the TBPL2 protein (arrow).



Immunohistochemistry (Paraffin-embedded Sections)

Image 3. TBPL2 Antibody (N-term) (ABIN656105 and ABIN2845447) immunohistochemistry analysis in formalin fixed and paraffin embedded human uterus tissue followed by peroxidase conjugation of the secondary antibody and DAB staining. This data demonstrates the use of TBPL2 Antibody (N-term) for immunohistochemistry. Clinical relevance has not been evaluated.