

Datasheet for ABIN656111
anti-STUB1 antibody (C-Term)[Go to Product page](#)

3 Images

Overview

Quantity:	400 µL
Target:	STUB1
Binding Specificity:	AA 236-263, C-Term
Reactivity:	Human
Host:	Rabbit
Clonality:	Polyclonal
Conjugate:	This STUB1 antibody is un-conjugated
Application:	Western Blotting (WB), Flow Cytometry (FACS)

Product Details

Immunogen:	This STUB1 antibody is generated from rabbits immunized with a KLH conjugated synthetic peptide between 236-263 amino acids from the C-terminal region of human STUB1.
Clone:	RB32217
Isotype:	Ig Fraction
Predicted Reactivity:	C, M
Purification:	This antibody is purified through a protein A column, followed by peptide affinity purification.

Target Details

Target:	STUB1
Alternative Name:	STUB1 (STUB1 Products)

Target Details

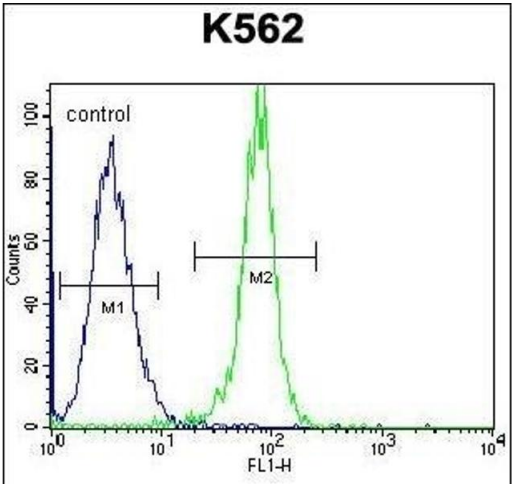
Background:	STUB1, or CHIP, is a ubiquitin ligase/cochaperone that participates in protein quality control by targeting a broad range of chaperone protein substrates for degradation (Min et al., 2008 [PubMed 18411298]).
Molecular Weight:	34856
Gene ID:	10273
NCBI Accession:	NP_005852
UniProt:	Q9UNE7
Pathways:	Regulation of Hormone Metabolic Process , Response to Water Deprivation

Application Details

Application Notes:	WB: 1:1000. WB: 1:1000. FC: 1:10~50
Restrictions:	For Research Use only

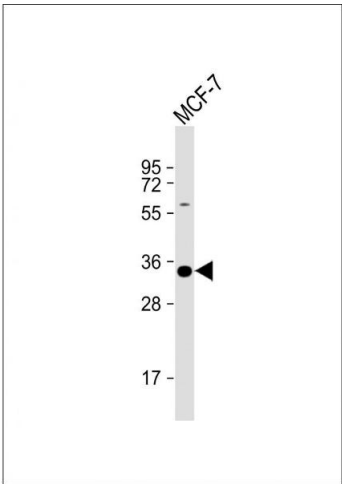
Handling

Format:	Liquid
Buffer:	Purified polyclonal antibody supplied in PBS with 0.09 % (W/V) sodium azide.
Preservative:	Sodium azide
Precaution of Use:	This product contains Sodium azide: a POISONOUS AND HAZARDOUS SUBSTANCE which should be handled by trained staff only.
Storage:	4 °C,-20 °C
Storage Comment:	Maintain refrigerated at 2-8 °C for up to 6 months. For long term storage store at -20 °C in small aliquots to prevent freeze-thaw cycles.
Expiry Date:	6 months



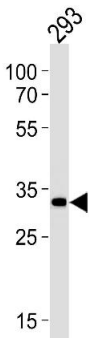
Flow Cytometry

Image 1. STUB1 Antibody (C-term) (ABIN656111 and ABIN2845451) flow cytometric analysis of K562 cells (right histogram) compared to a negative control cell (left histogram). FITC-conjugated goat-anti-rabbit secondary antibodies were used for the analysis.



Western Blotting

Image 2. Anti-STUB1 Antibody (C-term) at 1:1000 dilution + MCF-7 whole cell lysate Lysates/proteins at 20 µg per lane. Secondary Goat Anti-Rabbit IgG, (H+L), Peroxidase conjugated at 1/10000 dilution. Predicted band size : 35 kDa Blocking/Dilution buffer: 5 % NFDM/TBST.



Western Blotting

Image 3. STUB1 Antibody (C-term) (ABIN656111 and ABIN2845451) western blot analysis in 293 cell line lysates (35 µg/lane). This demonstrates the STUB1 antibody detected the STUB1 protein (arrow).